

ALPINE RACE PROGRAM 2011-12



ROSSIGNOL 
racingusa.rossignol.com

ROSSIGNOL
PURE MOUNTAIN
COMPANY



Race Center Bible 11-12

Table of Contents

1. Table of Contents
2. Race Center List
3. Adult and Junior Race Skis
4. Adult and Junior Race Boots and Bindings
5. Sizing Chart
6. Alpine Sponsorship Program Criteria 11-12
7. Race Department Contacts
8. F.I.S. and USSA Equipment Rules 11-12
9. Race Product Compatibility
10. Binding and Boot Ramp Angles
11. I-Box WC / I-Box Composite Plate Binding Mounting Chart
12. MXF Binding Mounting Instructions
13. Boot Size Conversion Chart
14. Tuning Specs
15. Free-Hand Plate Mounting Instructions
16. Boot ISO Adult Standards
17. Race Stock Product Warranty

ROSSIGNOL ALPINE RACE CENTERS 2011-12

EASTERN

CONNECTICUT

SKI HAUS, INC. / NEW MILFORD, CT
845-279-3100 • www.skihausonline.com

SUBURBAN CYCLE & SPORTS / BERLIN, CT
860-828-5808 • www.suburbansports.com

DISTRICT OF COLUMBIA

SKI CENTER / WASHINGTON, DC
202-966-4474 • www.skicenter.com

MASSACHUSETTS

MOUNTAINSIDE SKI & SPORTS / PRINCETON, MA
978-464-2300 • www.mtnsidesports.com

MAINE

SKI DEPOT / JAY, ME
207-897-5445 • www.raceskis.com

NEW HAMPSHIRE

BOB SKINNER'S SKI & SPORTS / MOUNT SUNAPEE, NH
603-763-2303 • www.bobskinner.com

RODGERS SKI & SPORT INC / LINCOLN, NH
603-745-8930 • www.raceskis.com

PICHE'S SKI SHOP / GILFORD, NH
603-524-2068 • www.piches.com

STAN & DAN SPORTS / NO CONWAY, NH
603-356-6997 • www.stananddansports.com

PENNSYLVANIA

MOUNTAINSIDE SKI & SPORTS / MECHANICSBURG, PA
717-697-2063 • <http://www.mountainsideski-sports.com>

GUNETHERS / HONESDALE, PA
570-253-5528 • www.guenthersskihaus.com

MICHIGAN

BAHNHOF SKI SHOP / PETOSKEY, MI
231-347-2112 • www.bahnhof.com

MINNESOTA

PIERCE SKATE & SKI / BLOOMINGTON, MN
952-884-1990 • www.pierceskateandski.com

HOIGAARD'S / ST LOUIS PARK, MN
952-929-1351 • www.hoigaards.com

NEW JERSEY

MCAFFEE SKI & SNOWBOARD / VERNON, NJ
973-827-6900 • www.mcafeeski.com

NEW YORK

MUD, SWEAT N GEARS / ELLICOTTVILLE, NY
716-699-8300 • www.mudsweatgears.com

SPORTS PAGE SHOP, INC. / QUEENSBURY, NY
518-792-1304 • www.sportspageski.com

THE SKI COMPANY / ROCHESTER, NY
585-292-0580 • www.skicompany.com

THE SKI COMPANY / SYRACUSE, NY
315-445-1890 • www.skicompany.com

SNOW SKI AND BOARD / ROCHESTER, NY
585-385-7669 • www.snowskiandboards.com

VERMONT

PEAK PERFORMANCE SKI SHOP / KILLINGTON, VT
802-422-9447 • www.peakskishop.com

RACE STOCK SPORTS / WATERBURY, VT
802-578-3585 • www.racestocksports.com

THE START HOUSE SKI & BIKE / WOODSTOCK, VT
802-457-3377 • www.starhouseskiandbike.com

WISCONSIN

LES MOISE / MILWAUKEE, WI
414-964-5330 • www.lesmoiseinc.com

LES MOISE / BROOKFIELD, WI
262-879-0800 • www.lesmoiseinc.com

WESTERN

ALASKA

WORLD CUP SPORTS / GRIDWOOD, AK
907-783-2282 • www.worldcupsports.com

CALIFORNIA

FIFTH SEASON, THE / MOUNT SHASTA, CA
530-926-3606 • www.thefifthseason.com

FOOTLOOSE INC. / MAMMOTH LAKES, CA
760-934-2400 • www.footloosesports.com

KITTREDGES ARCH & SPTG / MAMMOTH LAKES, CA
760-934-7566 • www.kittredgessports.com

START HAUS / TRUCKEE, CA
530-582-5781 • www.starhaus.com

GRANITE CHIEF / TRUCKEE, CA
530-587-2809 • www.granitechief.com

COLORADO

ALPINE BASE & EDGE / BOULDER, CO
303-443-0814 • <http://www.alpinebaseandedge.com/>

BOOTECH, INC. / ASPEN, CO
970-963-1668 • www.bootech.net

PODIUM SPORTS / FRISCO, CO
970-668-9996 • <http://www.podiumsportsgroup.com>

IDAHO

STURTEVANT MOUNTAIN OUTFITTERS / KETCHUM, ID
208-726-4501 • www.sturtos.com

NEVADA

RENO MOUNTAIN SPORTS / RENO, NV
775-825-2855 • www.renomountainsports.com

OREGON

VALIANS SKI SHOP / GOVERNMENT CAMP, OR
503-272-3525 • www.valliansskishop.com

UTAH

SPORTS DEN / SALT LAKE CITY, UT
801-582-5611 • www.sportsden.com

COLE SPORTS / PARK CITY, UT
435-649-4800 • www.colesport.com



SKIS



RADICAL WC DH

ITEM #	RA0Y120	RA0Y121
SIZE	216	211
SIDECUT	95.5/69/83	94/69/85
RADIUS	49.7m	46.3m
PLATE	I-BOX SPEED	I-BOX SPEED

- **RECOMMENDED:** AXIAL² WORLD CUP 200 MFX

- WC laminate sandwich construction
- Vertical sidewalls
- Specific speed wood core
- Specific speed base
- Mantec WC speed grinds
- Waxed and hot boxed – 5 cycles

RADICAL WC SG

ITEM #	RA0Y117	RA0Y119
SIZE	209	202
SIDECUT	99/67/85	98/67/84
RADIUS	38.1m	36.3m
PLATE	I-BOX SPEED	I-BOX SPEED

ITEM #	RA0YW12	RA0YR12
SIZE	196	176, 186
SIDECUT	100.8/67/84	99/63/83
RADIUS	34.6m	28m @ 186
PLATE	I-BOX TECH	I-BOX RACING

- **RECOMMENDED:** AXIAL² WORLD CUP 150 MFX

- WC laminate sandwich construction
- Vertical sidewalls
- Specific speed wood core
- Specific speed base
- Mantec WC speed grinds
- Waxed and hot boxed – 5 cycles



RADICAL WC GS

RA1DA01 - SIZE:	175, 182, 185, 191
• PLATE:	I-BOX TECH
• RECOMMENDED:	AXIAL ² WORLD CUP 150 MFX

RA1DA02 - SIZE:	170, 175
• PLATE:	I-BOX RACING
• RECOMMENDED:	AXIAL ² WORLD CUP 120

SIZE	SIDECUT	RADIUS
170	109/66/90	19m
175	104/67.5/88.5	23.6m
182	105/67.5/89	25m
185	100.5/68/89	27.8m
191	105.5/68/86.5	29m

- WC laminate sandwich construction
- Vertical sidewalls
- Race department wood core
- Race stock base #2 with DL4 race grind
- Square tail
- Cascade Tip



RADICAL WC SL

RA0AT01 - SIZE:	155, 165
• PLATE:	I-BOX TECH
• RECOMMENDED:	AXIAL ² WORLD CUP 150 MFX

RA0AT05 - SIZE:	150
• PLATE:	I-BOX RACING
• RECOMMENDED:	AXIAL ² WORLD CUP 120

SIZE	SIDECUT	RADIUS
150	116/65.5/100	11.4m
155	117/65.5/101	11.9m
165	120/65.5/102	13m

- WC laminate sandwich construction
- Vertical sidewall
- Race department wood core
- Race stock base #2 with DL4 race grind
- Square tail
- Slant nose tip for reduced swing weight
- Tip protector



RADICAL WC GS MASTER RA1DB01

- **SIZE:** 174, 185
- **PLATE:** I-BOX TECH
- **RECOMMENDED:** AXIAL² WORLD CUP 150 MFX

SIZE	SIDECUT	RADIUS
174	116/70/98	18.4m
185	113/71/96	23.1m

- WC laminate sandwich construction
- Vertical sidewall
- Race department wood core
- Race stock base #2 with DL4 race grind
- Square tail
- Slant nose tip for reduced swing weight
- Tip protector
- Cascade Tip
- Aggressive non-FIS sidecuts



RADICAL GS PRO

RA1DW01

- **SIZE:** 135, 140, 145, 150, 155, 160, 165
- **PLATE:** I-BOX RACING
- **RECOMMENDED:** AXIAL² 100S

SIZE	SIDECUT	RADIUS
135	102/65.5/84	14.3m
140	103/65.5/85	14.9m
145	104/66/86	15.8m
150	105/66/87	16.5m
155	105/66/87	17.6m
160	106/66/88	18.3m
165	109/66/89	17.9m

- WC laminate sandwich construction
- Soft junior flex
- Wood Core
- Vertical sidewalls
- Racing base
- Square Tail
- Snub nose tip



RADICAL SL PRO

RA1AR01	SIZE: 125*
RA0AU02	SIZES: 132, 139, 146, 150

- **PLATE:** I-BOX RACING
- **RECOMMENDED:** AXIAL² 100S

SIZE	SIDECUT	RADIUS
125	108/65/95	8.5m
132	109/64/92	9.5m
139	111/64/94	10.1m
146	115/65/99	10.3m
150	116/65.5/100	10.8m

- WC laminate sandwich construction
- Wood core
- Vertical sidewalls
- Racing base
- Soft junior flex
- Square Tail
- Reversible Slant nose tip deflector

* Note: Size 125 does not include I-Box Racing Plate



RADICAL PRO

RA1AR02

- **SIZE:** 125, 130, 135, 140, 145

- **RECOMMENDED:** AXIUM JR PRO RACE 70 S

SIZE	SIDECUT	RADIUS
125	108/65/95	8.5m
130	110/65/95	9.1m
135	112/65/95	9.6m
140	112/65/95	10.4m
145	115/64/95	10.6m

- Wood core laminate sandwich construction
- Vertical sidewalls
- Soft junior flex
- Racing base
- Round tip and square tail



RADICAL RSX

RA0BB01

- **SIZE:** 110, 120, 130, 140, 150

- **RECOMMENDED:** COMP J PRO 45 S

SIZE	SIDECUT	RADIUS
110	111/67/97	6.3m
120	111/67/97	7.7m
130	111/67/97	9.3m
140	111/67/97	10.8m
150	111/67/97	12.4m

- Cap construction
- Soft Junior flex
- Wood core
- Racing base
- Round tip and square tail

BOOTS



RADICAL WORLD CUP R2006

RB09230 - ZC - FLEX: 150
RB09220 - ZB - FLEX: 130
RB09210 - ZA - FLEX: 120
RB09200 - ZA SOFT- FLEX: 110

- **LAST:** 92mm
- **SIZE:** 22.5-28.5
- **SHELL:** R2006
- **MATERIAL:** POLYETHER
- **PADDING:** CORK FLOW / LACES
- **ATHLETE:** J1 / J2 / SENIOR FIS



RADICAL WC SENSOR INSIDE 130 RB01010

- **LAST:** 97mm
- **FLEX:** 130
- **SIZES:** 24.5-30.5
- **SHELL:** SENSOR INSIDE
- **MATERIAL:** POLYETHER
- **PADDING:** PU MOLDED
- **ATHLETE:** J1 / J2 / HIGH SCHOOL / USSA



RADICAL WC SENSOR INSIDE 110 RB19010

- **LAST:** 97mm
- **FLEX:** 110
- **SIZES:** 22.5-27.5
- **SHELL:** SENSOR INSIDE
- **MATERIAL:** POLYURETHANE
- **PADDING:** PU MOLDED
- **ATHLETE:** J2 / J3 / HIGH SCHOOL / USSA



RADICAL WC SENSOR INSIDE 90 RB19050

- **LAST:** 97mm
- **FLEX:** 90
- **SIZES:** 22.5-27.5
- **SHELL:** SENSOR INSIDE
- **MATERIAL:** POLYURETHANE
- **PADDING:** PU MOLDED
- **ATHLETE:** J3 / J4



RADICAL PRO 70 RB19070

- **LAST:** 98mm
- **FLEX:** 70
- **SIZES:** 3.5-9.5
- **SHELL:** RL11
- **MATERIAL:** POLYURETHANE
- **PADDING:** PU MOLDED
- **ATHLETE:** J4 / J5



RADICAL JR 65 RB19090

- **LAST:** 98mm
- **FLEX:** 65
- **SIZES:** 19.5-27.5
- **MATERIAL:** POLYURETHANE
- **PADDING:** EVA MACHINED
- **ATHLETE:** J5 / J6

POLES



RADICAL DH RD00201

7075 ALLOY / DH CONE / SIZES: 115-140



RADICAL SG/GS RD00202

7075 ALLOY / DH CONE / SIZES: 115-140

RADICAL SG/GS JR RD02101

7075 ALLOY / DH CONE / SIZES: 90-115



RADICAL SL RD00203

7075 ALLOY / 50MM DISK / SIZES: 115-140

RADICAL SL JR RD02102

7075 ALLOY / 50MM DISK / SIZES: 90-115



PRO J JR RD02001

5086 ALLOY / 50MM DISK / SIZES: 75-105

BAGS



RADICAL BURRITO WC 4 PAIR SKI BAG

RK0B006 / 4 PAIR SKIS, 230 CM



RADICAL WHEELIE WC

RK0B005 / 2 PAIR SKI BAG WITH WHEELS, 195CM



RADICAL BOOT WC PACK PRO

RK0B002 / FITS GEAR AND BOOTS
L21" X W16" X H9"



RADICAL RACER WC BOOT PACK

RK0B001 / FITS GEAR AND BOOTS, 25 LITER



RADICAL STARTING WC BAG

RK0B000
STARTING GATE WARM UP / L26" X W15" X H18"

ROSSIGNOL RACE DEPARTMENT RECOMMENDATIONS FOR SKIS AND BINDINGS



GENERAL OBSERVATIONS

Ski selection, both model and length, always will be a very personal and to a large degree a very subjective decision. The following chart shows some of the common trends we noticed as a result of our ongoing testing, which should be taken into consideration when making model and length decisions. Optimal ski length is determined by the following order: ability, weight and strength. The Rossignol Race Department hopes you will find this information useful and wishes you an excellent winter of racing. Good luck at the races!

JUNIOR 5 & 6 ages 6 to 10 years old (born 2001 or younger)

athlete weight	recommended Multi Event ski model & size for J6		recommended Multi Event ski model & size for J5		recommended binding
45 - 50 lbs	Radical RSX	110cm	Radical RSX	110	Comp J Pro 45 S
50 - 55 lbs		120cm		120	
55 - 60 lbs		130cm		125	
60 - 70 lbs		Radical Pro	130cm	130	Axium Jr Pro Race 70 S
70 - 80 lbs			140cm	135	
80 - 90 lbs			140cm	140	
100 - 110 lbs			140cm	145	

***Lighter and/or less aggressive athletes should error on the shorter size

***Lighter and/or less aggressive J5 racers should opt for Radical RSX model

JUNIOR 4 ages 11 to 12 years old (born 2000 & 1999)

athlete weight	recommended GS model	recommended GS size	recommended SL model	recommended SL size	recommended model and size for use as Multi Event ski	recommended binding		
70 - 80 lbs	Radical GS Pro w/ I-Box Composite Plate	135cm	Radical SL Pro w/ I-Box Composite Plate	125cm	Radical Pro	Axium Jr Pro Race 70 S		
80 - 90 lbs		140cm		132cm				
90 - 100 lbs		145cm		139cm		146cm	135cm	Axial ² 100 S
		150cm						
100 - 110 lbs		155cm						
110 - 120 lbs		160cm						
120 + lbs	165cm							

***Lighter and/or less aggressive athletes should error on the shorter size

JUNIOR 3 ages 13 to 14 years old (born 1998 & 1997)

athlete weight	recommended GS model	recommended GS size	recommended SL model	recommended SL size	recommended binding
90 - 100 lbs	Radical GS Pro w/ I-Box Composite Plate	155cm	Radical SL Pro w/ I-Box Composite Plate	132cm	Axial ² 100 S
100 - 110 lbs		160cm		139cm	
110 - 120 lbs		165cm		146cm	
120 - 130 lbs	Radical WC GS w/ I-Box Composite Plate	170cm	Radical WC SL w/ I-Box Composite Plate	150cm	Axial ² WC 120
130 - 140 lbs		175cm			
140 - 150 lbs	Radical WC GS w/ I-Box WC Plate	182cm	Radical WC SL w/ I-Box WC Plate	155cm	WC MFX 150
150 + lbs					

***Lighter and/or less aggressive athletes should error on the shorter size and use the Composite Plate when applicable

JUNIOR 1 / 2, Seniors, Masters **-WOMEN-** ages 15 & up (born 1996 and older)

athlete weight	High School / USSA RECOMMENDATIONS					F.I.S. RECOMMENDATIONS				
	recommended GS model	recommended GS size	recommended SL model	recommended SL size	recommended binding	recommended GS model	recommended GS size	recommended SL model	recommended SL size	recommended binding
100 - 110 lbs	Radical WC GS w/ I-Box Composite Plate	170cm	Radical WC SL w/ I-Box Composite Plate	150cm	Axial ² WC 120	Radical WC GS w/ I-Box WC Plate	175cm	Radical WC SL w/ I-Box WC Plate	155cm FIS Rules	WC MFX 150
110 - 120 lbs										
120 - 130 lbs										
130 - 140 lbs	Radical WC GS w/ I-Box WC Plate	175cm	Radical WC SL w/ I-Box WC Plate	155cm	WC MFX 150	175cm or 182cm	182cm			
140 - 150 lbs										
150 - 160 lbs										
160 - 170 lbs										
170 + lbs										

***Lighter and/or less aggressive athletes should error on the shorter size and use the Composite Plate when applicable

JUNIOR 1 / 2, Seniors, Masters **-MEN-** ages 15 & up (born 1996 and older)

athlete weight	High School / USSA RECOMMENDATIONS					F.I.S. RECOMMENDATIONS				
	recommended GS model	recommended GS size	recommended SL model	recommended SL size	recommended binding	recommended GS model	recommended GS size	recommended SL model	recommended SL size	recommended binding
100 - 110 lbs	Radical WC GS w/ I-Box Composite Plate	170cm	Radical WC SL w/ I-Box Composite Plate	150cm	Axial ² WC 120	Radical WC GS w/ I-Box WC Plate	185cm	Radical WC SL w/ I-Box WC Plate	165cm FIS rules	WC MXF 150
110 - 120 lbs										
120 - 130 lbs										
130 - 140 lbs	Radical WC GS w/ I-Box WC Plate	175cm	Radical WC SL w/ I-Box WC Plate	155cm	WC MFX 150	191cm				
140 - 150 lbs										
150 - 160 lbs										
160 - 170 lbs										
170 + lbs										

NOTE All recommendations comply F.I.S./USSA regulations for radius, minimum length, standheight



Rossignol is once again excited about being an integral part of the ski racing community by supporting and developing junior ski racing on an international level. The brand's commitment to ski racing has continued to produce successful World Cup leaders such as JB Grange, Christof Innerhofer and Tessa Worley and local US hero's such as Nolan Kasper, Will Gregorak, Ryan Cochran-Siegle, Sarah Schleper, Stacey Cook. As industry leaders we provide a sponsorship format that clearly states four levels (Platinum, Gold, Silver, and Bronze) based on national age ranking. With Rossignol's sponsorship program athletes can clearly see where they stand.

ALPINE RACING SPONSORSHIP PROGRAM: SPONSORSHIP CRITERIA GUIDELINES

YEAR OF BIRTH	PLATINUM	GOLD	SILVER	BRONZE
1998	N/A	Rep Discretion	Top-5 at JO's	Top-15 at JO's
1997	N/A	Top 5 at JO's	Top-15 at JO's	JO Participation
1996	Rep Discretion	Top 3 at JO's	Top-15 at JO's	JO Participation
1995	(1) Top 5 - M (1) Top 3 - W	(1) Top 15 - M (1) Top 10 - W	(1) Top 30 - M (1) Top 30 - W	(1) Top 50 - M (1) Top 50 - W
1994	(1) Top 5 - M (1) Top 3 - W	(1) Top 15 - M (1) Top 10 - W	(1) Top 30 - M (1) Top 30 - W	(1) Top 50 - M (1) Top 50 - W
1993	(2) Top 5 - M (2) Top 3 - W	(1) Top 10 - M (1) Top 10 - W	(1) Top 30 - M (1) Top 30 - W	(1) Top 50 - M (1) Top 50 - W
1992	(1) Top 3 - M (2) Top 3 - W	(2) Top 10 - M (2) Top 10 - W	(1) Top 30 - M (1) Top 30 - W	(1) Top 50 - M (1) Top 50 - W
Non-Junior	NCAA Champion NorAm/Europa Cup Competitor Rep Discretion	NCAA All-American Rep Discretion	NCAA/USCSA Carnival Member Rep Discretion	NCAA/USCSA Team Member

* All sponsorship levels are based on national age ranking.

QUALIFICATION CRITERIA

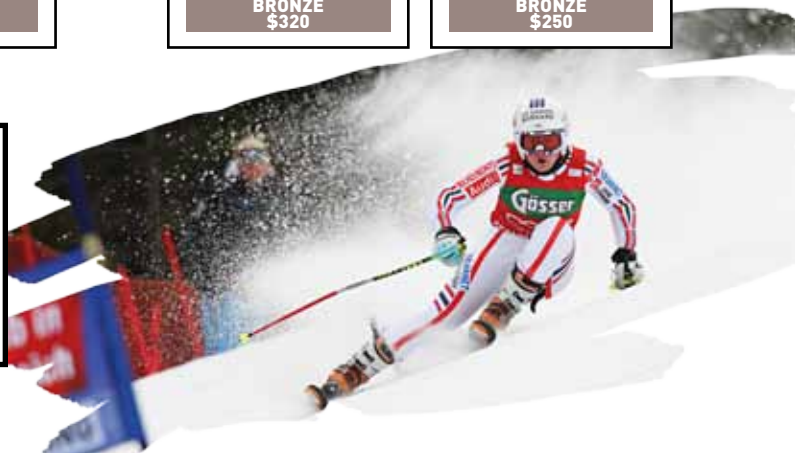
The designated criteria of this program must be met before submitting the order form. Limited spots available for Platinum, Gold, and Silver sponsorships. Product will be on a first come first serve basis and at the discretion of the Rossignol Race Reps. Any racer accepted into this program must race and train exclusively on Rossignol skis, boots, and bindings. Rossignol athletes are expected to be a positive ambassador of the company and the sport. Any racer in the program who is on the podium must represent the company by highlighting Rossignol skis on the podium.

SPONSORSHIP PACKAGES

<p>PACKAGE A 2 pr GS skis 2 pr SL skis 1 pr boots</p> <p>MSRP \$5000</p> <p>RACER'S PRICE</p> <table border="1"> <tr><td>PLATINUM</td><td>\$0</td></tr> <tr><td>GOLD</td><td>\$1800</td></tr> <tr><td>SILVER</td><td>\$2600</td></tr> <tr><td>BRONZE</td><td>\$3600</td></tr> </table>	PLATINUM	\$0	GOLD	\$1800	SILVER	\$2600	BRONZE	\$3600	<p>PACKAGE B 2 pr GS skis 2 pr SL skis 1 pr SG skis 1 pr boots</p> <p>MSRP \$6250</p> <p>RACER'S PRICE</p> <table border="1"> <tr><td>PLATINUM</td><td>\$600</td></tr> <tr><td>GOLD</td><td>\$2450</td></tr> <tr><td>SILVER</td><td>\$3100</td></tr> <tr><td>BRONZE</td><td>\$4500</td></tr> </table>	PLATINUM	\$600	GOLD	\$2450	SILVER	\$3100	BRONZE	\$4500	<p>PACKAGE C 2 pr GS skis 2 pr SL skis 1 pr SG skis 1 pr DH skis 1 pr boots</p> <p>MSRP \$7500</p> <p>RACER'S PRICE</p> <table border="1"> <tr><td>PLATINUM</td><td>\$1200</td></tr> <tr><td>GOLD</td><td>\$3150</td></tr> <tr><td>SILVER</td><td>\$3600</td></tr> <tr><td>BRONZE</td><td>\$5400</td></tr> </table>	PLATINUM	\$1200	GOLD	\$3150	SILVER	\$3600	BRONZE	\$5400	<p>WORLD CUP 200 MFX BINDING (may be purchased alone or in addition to package)</p> <p>MSRP \$475</p> <p>RACER'S PRICE</p> <table border="1"> <tr><td>PLATINUM</td><td>\$120</td></tr> <tr><td>GOLD</td><td>\$180</td></tr> <tr><td>SILVER</td><td>\$260</td></tr> <tr><td>BRONZE</td><td>\$320</td></tr> </table>	PLATINUM	\$120	GOLD	\$180	SILVER	\$260	BRONZE	\$320	<p>WORLD CUP 150 MFX BINDING (may be purchased alone or in addition to package)</p> <p>MSRP \$375</p> <p>RACER'S PRICE</p> <table border="1"> <tr><td>PLATINUM</td><td>\$90</td></tr> <tr><td>GOLD</td><td>\$135</td></tr> <tr><td>SILVER</td><td>\$210</td></tr> <tr><td>BRONZE</td><td>\$250</td></tr> </table>	PLATINUM	\$90	GOLD	\$135	SILVER	\$210	BRONZE	\$250
PLATINUM	\$0																																											
GOLD	\$1800																																											
SILVER	\$2600																																											
BRONZE	\$3600																																											
PLATINUM	\$600																																											
GOLD	\$2450																																											
SILVER	\$3100																																											
BRONZE	\$4500																																											
PLATINUM	\$1200																																											
GOLD	\$3150																																											
SILVER	\$3600																																											
BRONZE	\$5400																																											
PLATINUM	\$120																																											
GOLD	\$180																																											
SILVER	\$260																																											
BRONZE	\$320																																											
PLATINUM	\$90																																											
GOLD	\$135																																											
SILVER	\$210																																											
BRONZE	\$250																																											

RACE DEPARTMENT CONTACT

BEN BURNS
Race Program Coordinator / USA
cell phone: 801-243-6594
office phone: 435-252-3360 / fax: 435-252-3303
e-mail: ben.burns@rossignol.com



ROSSIGNOL
PURE MOUNTAIN
COMPANY



RACE DEPARTMENT – CONTACTS

National Race Coordinator:
Mt Hood Manager

Ben Burns

(435) 252-3360 office
(801) 243-6594 cell
ben.burns@rossignol.com

Rossignol Ski Co

The Mountain Center
PO Box 981060
1413 Center Dr.
Park City, UT 84098

Assisted by:

Rocky Mountain Division:

Colorado

Tyler Northrop (970) 471-4455

tyler.northrop@rossignol.com

Eastern Division:

Maine, Massachusetts, New Hampshire, New York, Vermont

Adam Sink (603) 370-0255

adam.sink@rossignol.com

Central Division:

Illinois, Michigan, Minnesota, Wisconsin

Gary Ladd (715) 546-2812

gary.ladd@rossignol.com

Far West:

Mammoth, Tahoe

Mike Braun (661) 857-9346

mike.braun@rossignol.com

Freeride Team Manager:

Matt Rihm (802) 558-6029

matt.rihm@rossignol.com



F.I.S. & USSA Equipment Rules 2011/2012



	World Cup & Continental Cup (Nor-Am, Europa Cup Only)	World Cup & Continental Cup (Nor-Am, Europa Cup Only)	FIS/ENL and USSA 15 yrs old +	FIS/ENL and USSA 15 yrs old +	Children 2 FIS 13-14 yr old international race only	Children 1 FIS 11-12 yr old international race only	Junior 3 USSA 13 - 14 yr old	Junior 4 USSA 11 - 12 yr old	USSA/FIS Masters	USSA/FIS Masters
	Men	Women	Men	Women	Boys & Girls	Boys & Girls	Boys & Girls	Boys & Girls	Men	Women

Minimum Ski Length

DH	215 cm	210 cm	210 cm USSA may use SG skis for DH	205 cm USSA may use SG skis for DH	no rule	no rule	no rule	no rule	Only skis designated for DH or SG allowed	
SG	205 cm	200 cm	200 cm	195 cm	175 cm	no rule	no rule	no rule	185 cm GS skis allowed	180 cm GS skis allowed
GS	185 cm	180 cm	180 cm	175 cm	130 cm	130 cm	no rule	no rule	See Note Below	See Note Below
SL	165 cm	155 cm	165 cm 10cm tolerance for J2 men	155 cm	130 cm	130 cm	no rule	no rule	See Note Below	See Note Below

Minimum Ski Radius

DH	45 m	45 m	45 m USSA may use SG skis for DH	45 m USSA may use SG skis for DH	no rule	no rule	no rule	no rule	See Note Below	See Note Below
SG	33 m	33 m	33 m	33 m	27 m	no rule	no rule	no rule	See Note Below	See Note Below
GS	27 m	23 m	FIS 27 m USSA 21 m	FIS 23 m USSA 21 m	17 m	14 m	no rule	no rule	See Note Below	See Note Below
SL	no rule	no rule	no rule	no rule	no rule	no rule	no rule	no rule	See Note Below	See Note Below

Minimum Ski Waist Width

DH	67 mm	67 mm	FIS 67 mm USSA 60 mm	FIS 67 mm USSA 60 mm	no rule	no rule	no rule	no rule	See Note Below	See Note Below
SG	65 mm	65 mm	FIS 65 mm USSA 60 mm	FIS 65 mm USSA 60 mm	no rule	no rule	no rule	no rule	See Note Below	See Note Below
GS	65 mm	65 mm	FIS 65 mm USSA 60 mm	FIS 65 mm USSA 60 mm	no rule	no rule	no rule	no rule	See Note Below	See Note Below
SL	63 mm	63 mm	FIS 63 mm USSA 60 mm	FIS 63 mm USSA 60 mm	no rule	no rule	no rule	no rule	See Note Below	See Note Below

Maximum Binding Stack Height

Measurement includes ski + plate + binding

50 mm	50 mm	50 mm	50 mm	50 mm	50 mm	50 mm	50 mm	50 mm	50 mm	50 mm
-------	-------	-------	-------	-------	-------	-------	-------	-------	-------	-------

Maximum Boot Height

Measurement from sole to top of foot bed

43 mm	43 mm	43 mm	43 mm	43 mm	43 mm	43 mm	43 mm	43 mm	45 mm	45 mm
-------	-------	-------	-------	-------	-------	-------	-------	-------	-------	-------

* For FIS Masters Competition, equipment rules are recommendations with the following exceptions: in SG races, the ski length may not be less than 185 cm for men and 180 cm for women:(GS skis may be used for SG). For the FIS recommendations for ski length, ski radius and waist width see the current FIS Specifications for Competition Equipment.

* USSA Masters rules conform to the FIS Masters equipment rules. USSA recommends that competitors in USSA masters events compete on equipment designed for the particular discipline (DH, SL, GS, SG), but does not make any recommendations in regard to ski length.



Race Product Compatibility 11-12

Plate/ Binding

item #	Ski/plate	Plate	Binding	Boot sole range
RA0Y120	Radical WC DH I-Box Speed	I-Box WC Speed	Axial ² WC MXF 200,150, 120	264 - 341mm
RA0Y117	Radical WC SG I-Box Speed	I-Box WC Speed	Axial ² WC MXF 200,150, 120	264 - 341mm
RA0YW12	Radical SG I-Box Tech (196)	I-Box WC Speed	Axial ² WC MXF 200,150, 120	264 - 341mm
RA0YR12	Radical SG I-Box Composite (176/186)	I-Box Composite	Axial ² WC 120, Axial ² , Axium *no MXF	Axial ² WC 120 264-341mm Axial ² & Axium 246-365mm
RA1DA01	Radical GS WC I-Box Tech (175/181/185/191)	I-Box WC Tech	Axial ² WC MXF 200,150, 120	264 - 341mm
RA1DA02	Radical GS WC I-Box Composite (170/175)	I-Box Composite	Axial ² WC MXF 200,150, 120	264 - 341mm
RA0AT01	Radical SL WC I-Box (155/165)	I-Box WC Tech	Axial ² WC MXF 200,150, 120	264 - 341mm
RA0AT05	Radical SL I-Box Composite(150)	I-Box Composite	Axial ² WC MXF 200,150, 120	265 - 341mm
RA0DW01	Radical GS Pro w/ I-Box Composite (Jr GS)	I-Box Composite	Axial ² WC 120, Axial ² , Axium	Axial ² WC 120 264-341mm
RA0AU02	Radical SL Pro w/ I-Box Composite (Jr SL)	I-Box Composite	Axial ² WC 120, Axial ² , Axium *no MXF	Axial ² WC 120 264-341mm Axial ² & Axium 246-365mm
RA1AR01	Radical Pro no plate	no plate	Axial ² WC 120, Axial ² , Axium *no MXF	Axial ² WC120 264-341mm Axial ² & Axium 246-365mm
RA0BB01	Radical RSX no plate	no plate	Axial ² , Axium, Axial 1*, Comp J *no MXF	

FIS Racing Standheight (measurement is = Ski + Plate + Binding)

item #	Ski/plate	Lifter	FIS Rule 10-11
J2 and older (15yrs +)			
RA0Y120	Radical WC DH I-Box Speed	possible but not recommended	50mm
RA0Y117	Radical WC SG I-Box Speed	possible but not recommended	50mm
RA0YW12	Radical SG I-Box Tech (196)	possible but not recommended	50mm
RA0YR12	Radical SG I-Box Composite (176/186)	possible but not recommended	50mm
RA1DA01	Radical GS WC I-Box Tech (175/181/185/191)	4mm lifter	50mm
RA1DA02	Radical GS WC I-Box Composite (170/175)	4mm lifter	50mm
RA0AT01	Radical SL WC I-Box (155/165)	4mm lifter	50mm
RA0AT05	Radical SL I-Box Composite(150)	4mm lifter	50mm
J3 and younger (14yrs and younger)			
RA0YW12	Radical SG I-Box Tech (196)	possible but not recommended	50mm
RA0YR12	Radical SG I-Box Composite (176/186)	possible but not recommended	50mm
RA1DA01	Radical GS WC I-Box Tech (175/181/185/191)	4mm lifter	50mm
RA1DA02	Radical GS WC I-Box Composite (170/175)	4mm lifter	50mm
RA0AT01	Radical SL WC I-Box (155/165)	4mm lifter	50mm
RA0AT05	Radical SL I-Box Composite(150)	4mm lifter	50mm
RA0DW01	Radical GS Pro w/ I-Box Composite (Jr GS)	4mm ok <i>but not recommended</i>	50mm
RA0AU02	Radical SL Pro w/ I-Box Composite (Jr SL)	4mm ok <i>but not recommended</i>	50mm
RA1AR01	Radical Pro no plate	4mm ok	50mm
RA0BB01	Radical RSX no plate	up to 14mm can be added*	50mm

*recommend Axium Jr Pro Race or Comp J Pro

FIS Racing Boot Height

item #	Boot model	Additional Lifter	Actual Height size 8 w/ stock footbed	Stock Footbed Thickness	FIS Rule 11-12
RB09200-RB09230	R2006	Not Possible**	43.0mm	3.9mm	43mm
RB01010	Radical WC Sensor Inside 130	3mm	40.0mm	3.9mm	43mm
RB19010	Radical WC Sensor Inside 110 (Short Cuff)	3mm	40.0mm	3.9mm	43mm
RB19050	Radical WC Sensor Inside 90 (Short Cuff)	3mm	40.0mm	3.9mm	43mm
RB09070	Radical Jr. Pro 70 (RL11)	3mm	39.0mm	3.9mm	43mm

*Caution this is a guideline, Footbed thickness will effect overall height

**3mm maybe added if grinding sole for canting

Binding Bootsole Norms

item #	Description	Toe Norm
RC1A001-RC1A003	Axial ² WC MXF, Axial ² WC 120	Adult only
RC0A007	Axial ² 100 Race	Adult only
RC0A022	Axium Jr Pro Race	Children & Adult
RC0A023	Comp J Pro	Children & Adult



Race Product Compatibility 10-11

Bootssole Norms

item #	Boot model	sizes available	Adult DIN	Child DIN
RB09200-RB09230	R2006	22.5 - 28.5	22.5 - 28.5	
RB01010	Radical WC Sensor Inside 130	24.5-30.5	24.5-30.5	
RB19010	Radical WC Sensor Inside 110 (Short Cuff)	22.5-27.5	22.5-27.5	
RB19050	Radical WC Sensor Inside 90 (Short Cuff)	22.5-27.5	22.5-27.5	
RB09070	Radical Jr. Pro 70 (RL11)	3 - 9	3 - 9	
RB19090	Radical Jr 65	19.5 - 26.5	23.5 - 26.5	19.5 -22.5
RB05070	Comp J4	23.0 - 26.5	23.0 - 26.5	
RB05120	Comp J3	18.5 - 22.5		18.5 - 22.5
RB76020	R 18	15.5 - 22.5		15.5 - 22.5

Mounting Templates

item #	Description	Bindings	Ski Width Rubber in	Ski Width Rubber out	Ski Width No Rubber
FC0F001	Adult Mounting Template	Axial ² WC MXF, Axial ² WC 120, Axial ² , Axium, Saphir, Axial ² Speedset, Axium/Saphir	80	120	130
FC8NF01	I-Box Mounting Template	Plate for Axial ² WC MXF	91		
FC0F018	Junior Mounting Template	Comp J, Comp Kid	77	93	96

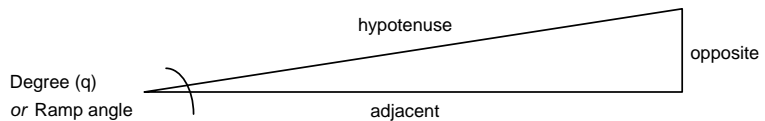


BINDING & BOOT RAMP ANGLES

	Toe Height in mm	Heel Height in mm	Heel-Toe Difference in mm	Size 8 308 Ramp in degrees	Size 4 276 Ramp in degrees
Axial² WC MXF 200 & 150	13.50	17.00	3.50	0.7	0.7
Axial² WC 120	14.00	17.00	3.00	0.6	0.6
Axial² 100 Race	14.50	19.50	5.00	0.9	1.0
Axium Jr Pro Race	16.00	22.00	6.00	1.1	1.2
Axium Jr	9.00	18.00	9.00	1.7	1.9

R2006	2.2 to 2.5	degrees, depending on size	} Small size boots more ramp Large size boots less ramp
Radical WC Sensor Inside 130	3.5 to 4.0	degrees, depending on size	
Radical WC Sensor Inside 110 (Short Cuff)	3.5 to 4.0	degrees, depending on size	
Radical WC Sensor Inside 90 (Short Cuff)	3.5 to 4.0	degrees, depending on size	
Radical Jr. Pro 70 (RL11)	3.6 to 4.0	degrees, depending on size	

Calculation: $\arctangent(q) = \text{opposite} / \text{adjacent} *$
 Opposite = Difference between Binding heel height and toe height in mm
 Adjacent = Athlete's bootsole length in mm



Equation: $[(\arctan(q) = \text{opposite} / \text{adjacent}) * (180 / 3.14159)]$

*the result of the above calculation is in radians and needs to be converted to degrees by multiplying by $(180 / \text{Pi})$ $\text{Pi} = 3.14159$

I-BOX WC / I-BOX / RACE FLEX WC PLATE BINDING MOUNTING

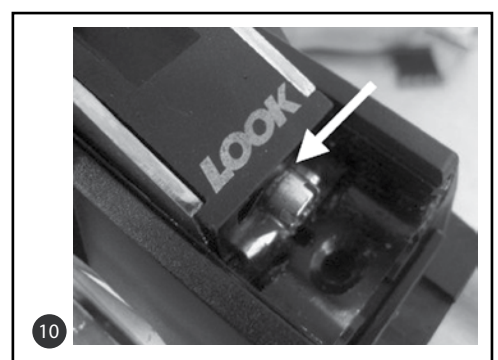
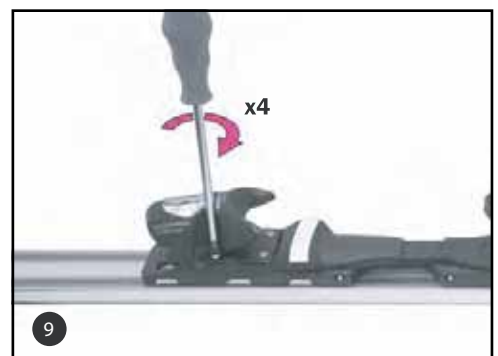
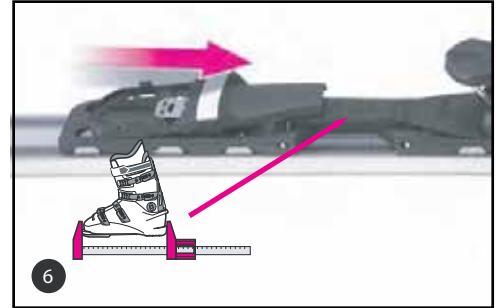
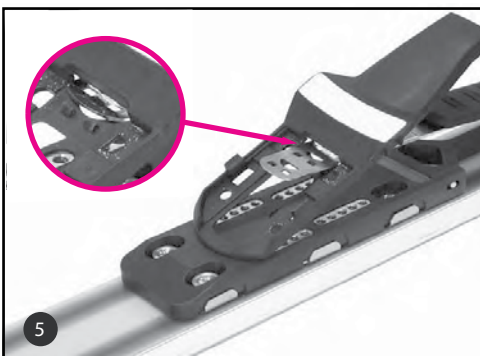
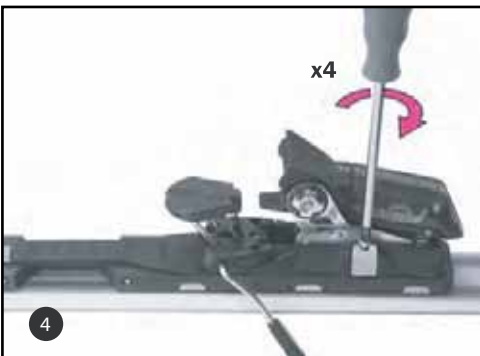
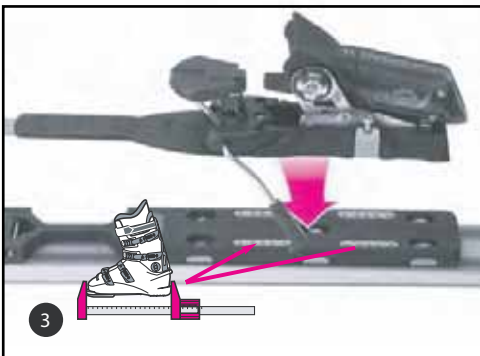
FOR DYNASTAR PX RACING MAXFLEX AND
ROSSIGNOL AXIAL² WORLD CUP MFX



Quick Reference Chart for Binding Placement

<i>sole length range</i>	<i>toe piece mounting</i>	<i>heel piece mounting</i>
264-280mm		
281-294mm		
295-308mm		
309-325mm		
326-341mm		

LOOK PX RACING MAXFLEX ROSSIGNOL AXIAL² WORLD CUP MFX



1. Insert cover at 30° angle to heel.
2. Push down toward metal bar to lock center plate in place.
3. Align heel with appropriate boot sole range. See chart on Page 17.
4. Tighten screws and ensure heel piece is flush with ski or plate.
5. While lifting the front of the metal bar, insert AFD plate.
6. Slide AFD plate to the appropriate boot sole range.
7. AFD plate must match boot sole marking.
8. Position AFD by using the forward pressure screw at heel. Once the holes from the AFD align with the proper holes on the plate, connect the toe piece to AFD. See chart on Page 17.
9. Tighten the screws with 5Nm of torque and ensure toe piece is flush with ski or plate.
10. To check the correct forward pressure, the mark on the screw should be lined up with the black plastic piece as shown below.
11. Go to page 35 for adjustment settings.

Alpine Boot Sizer 11/12



Rossignol Boot Sole Sizes & Lengths in millimeters (mm)

European Adult										37.0	38.0	39.5	40.5	42.0	43.0	44.5	46.0	47.0	48.5		
Mondo			15.5	16.5	17.5	18.5	19.5	20.5	21.5	22.5	23.5	24.5	25.5	26.5	27.5	28.5	29.5	30.5	31.5	32.5	33.5
Men - US Sizing								2.5	3.5	4.5	5.5	6.5	7.5	8.5	9.5	10.5	11.5	12.5	13.5	14.5	15.5
Women - US Sizing										5.5	6.5	7.5	8.5	9.5	10.5						
Kids - US Sizing			9.5	10.5	11.5	12.5	13.5	1.5	2.5	3.5	4.5	5.5									
Model	shell width	size type																			
R2006	92mm	Mondo								266	276	284	293	303	314	320					
Radical WC 130	97mm	Mondo										286	296	306	316	326	336	346			
Radical WC SI 110/90 (Short Cuff)	97mm	Mondo								266	276	286	296	306	316						
Radical Jr Pro 70 (RL11)	98mm	US Mens							266	276	284	292	300	308	317						
Radical JR 65	junior	Mondo					240*	249*	259*	268*	275	286	298								
Comp J4	junior	Mondo									274	283	293	305							
Comp J3	junior	Mondo				227*	237*	246*	256*	267*											

* Childrens boot sole norm

Sizing Suggestions

Follow the above suggestions for standard fit

For tighter Race Fit down size 1 size, note some customized boot fitting may be need

For extreme tight World Cup Race Fit down size 2 sizes, note some major customized boot fitting may be need



RACE DEPARTMENT TUNING SPECIFICATIONS

WORLD CUP TUNING SPECS

<i>event / ski</i>	<i>base degree</i>	<i>side edge degree</i>	<i>notes</i>
DH	1	3	sharp tip to tail with light dulling at tip and tail by athlete preference
SG	1	3	sharp tip to tail with light dulling at tip and tail by athlete preference
GS	.7 or 1	3	sharp tip to tail no dulling
SL	.5 or 1	3 or 4	sharp tip to tail no dulling

Note: these are general world cup tuning guide lines. Using different base and side bevels can drastically change the performance of a ski, this is based on athlete preference. Large side edge bevels will reduce ski life considerably.

RECOMMENDED JUNIOR RACER TUNING SPECS

<i>event / ski</i>	<i>base degree</i>	<i>side edge degree</i>	<i>notes</i>
DH	1	2	sharp tip to tail with light dulling roughly 2" to 4 " from contact point of tip and tail
SG	1	2	sharp tip to tail with light dulling roughly 1" to 3 " from contact point of tip and tail
GS	1	2	sharp tip to tail no dulling
SL	.7 or 1	2	sharp tip to tail no dulling
JUNIOR	1	1 or 2	sharp tip to tail no dulling as a general rule

Free-Hand Plate Mounting Guidelines

1. Assembly plate and position plate center on ski center mark



2. Align the plate side-to-side on the ski. This can be done visually and/or measured by using a caliper or tape measure
3. Secure the plate with at least 2 clamps



4. On the I-Box plate you will notice 4 holes that are not floating, and 5 holes that have floating slots.
5. The 5 holes that require floating inserts, position the floating insert in center of the floating slot.



6. Using a regular 7/32-inch drill bit. Lightly tap the drill bit through all the inserts, making a small mark (dimple) on the ski. Do not use any pressure



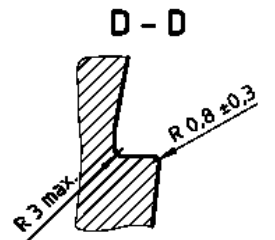
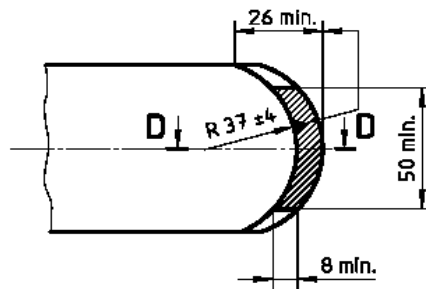
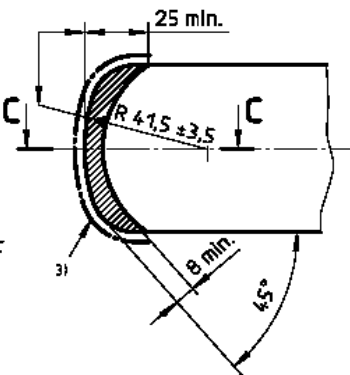
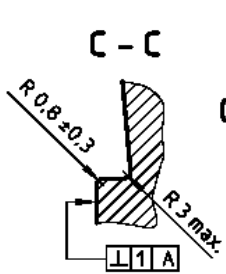
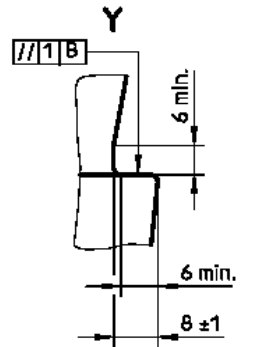
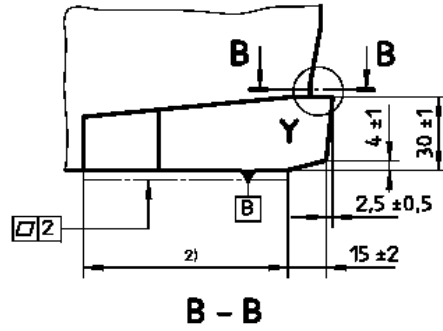
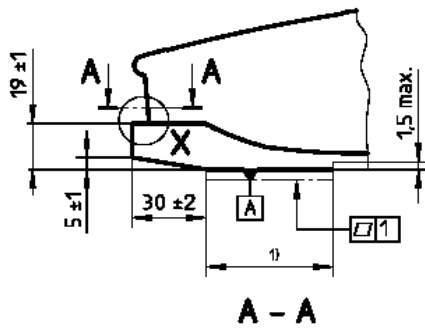
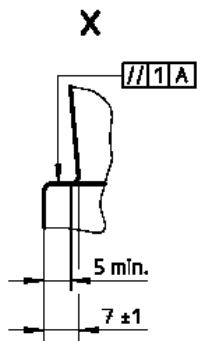
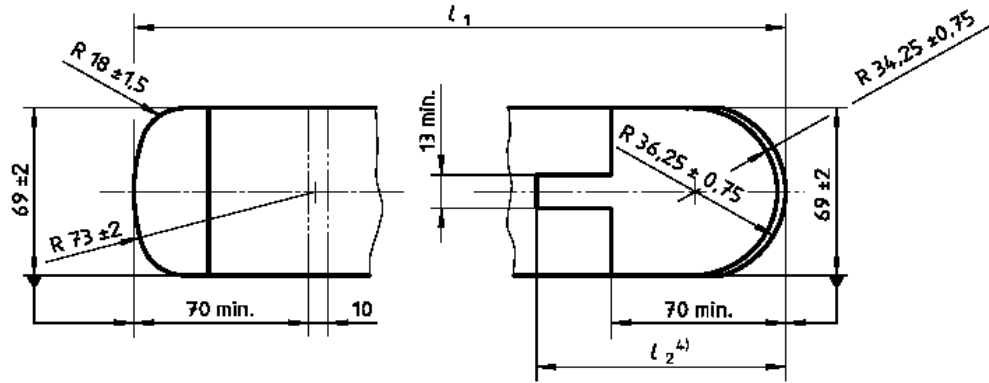
7. Remove the plate from the ski; you will have center drill marks (dimples) on the ski where you need to drill with the proper ski drill bit



8. Drill all the dimples with a 4.1x9.5 ski drill bit
9. Mount the plate
10. Mount binding in the correct holes for the boot sole length

Adult Boot Sole ISO standards

Dimensions in millimetres



SCHEDULE B
Rossignol Ski Company, Incorporated (“Rossignol”)

ROSSIGNOL LIMITED PRODUCT WARRANTY -Race Stock Products

The Rossignol products provided under this Lease Agreement will be warranted by Rossignol to be free of defects in workmanship and materials for a period of two years from the date of delivery. If a product proves to be otherwise, Rossignol, in its sole discretion, will repair or replace the defective product at Rossignol’s expense. Rossignol will not be responsible for any costs associated with the loss of use of any product. This limited warranty is subject to the following limitations:

All products for which a warranty claim is being made must be returned to a Rossignol Service Center for inspection. All products are to be shipped prepaid and insured. Rossignol assumes no responsibility for products during shipment to a Service Center. Shipping costs are not refundable.

Repaired or replaced product will be returned in a reasonable amount of time. Return shipping costs will be borne by Rossignol.

This limited warranty does not apply to:

- a) Normal racing wear and tear.
- b) Impact related damage, such as rocks or trees.
- c) Racing gate impact/contact damage.
- d) High speed crash damage
- e) Damage resulting from faulty or improper mounting of bindings.
- f) Damage caused by the use of non-Rossignol hardware while mounting bindings.
- g) Damage from the use of solvents, adhesives or other substances not specifically determined for use on ski or snowboard products.
- h) Any damage caused from anything other than defects in material or workmanship.

Coverage under this limited warranty is void if any modifications or alterations have been made to the product not specifically authorized in writing by Rossignol. Repaired or replaced products are covered only for the remainder of the original warranty period.

All warranties implied by state law, including the implied warranties of merchantability and fitness for a particular purpose, are hereby limited to the duration of the written warranty. Some states do not allow limitations on how long an implied warranty lasts, so the above limitation may not apply. With the exception of any warranties implied by state law as hereby limited, the foregoing express limited warranty is exclusive and in lieu of all other warranties, guarantees, agreements and similar obligations of manufacturer or seller.