



MOMENT  
2010 COLLECTION



Moment Skis is a living, breathing entity of people. It's a bunch of contributors, employees, our friends, local reps and customers – even you're making a contribution by reading this.

So many people helped us since the beginning. And the beginning feels like it was 10 years ago. Well time flies when you're starting a ski company. The beginning was really about 18 months ago in 2007 when we started full-time production and Casey stopped laying bricks at his masonry company. Now he's the CEO, Luke's a real college-educated engineer and marketer. Jason is managing the team and the books. Max moved in and out of our new Reno office/production shop/store front/internet sales hub/not-our-garage facility. He's going to school back east for artsy photographers, and he's very good at that too. It's a large mix of characters.

Our team's grown as well. While the original local Tahoe rippers are still with us. Things really changed last September when we got an email from Josh Bibby's manager. We just thought someone was playing a joke on us, but it was real. Now Josh is joined by, Ced, Jackie, Craig and Shelly, bringing together the most well-rounded team in skiing.

Today, Moment brings more than just 16 very different and specific hand-made ski models to the industry. We bring culture from outside the freeskiing world – like a mogul ski for the US Ski Team. We bring culture from outside skiing as a whole through art. The more we broaden our outside influence, the more innovation there is within Moment.

No one in this office really listens to Reggae, but Josh does up in Canada. A couple of us here wear really tight pants, while some keep them loose. At least one of us listens to mainstream rap and most of us can't stand to hear it in ski movies. A lot of our team riders are big-mountain junkies, but at least one will look for the park every day. Just like your group of friends, skiing is what we share and we want to share it with you.

Call, email or even stop by our Reno facility. We'll show you how we make skis by hand, have a beer or chat about skiing and help you with anything we can. You might even convince one of us to go ski and get away from the CNC machine or phone.

Thanks for listening and checking out our 2009/2010 line.

*Our Story*



# ARTISTS

two underold guys who make us look good

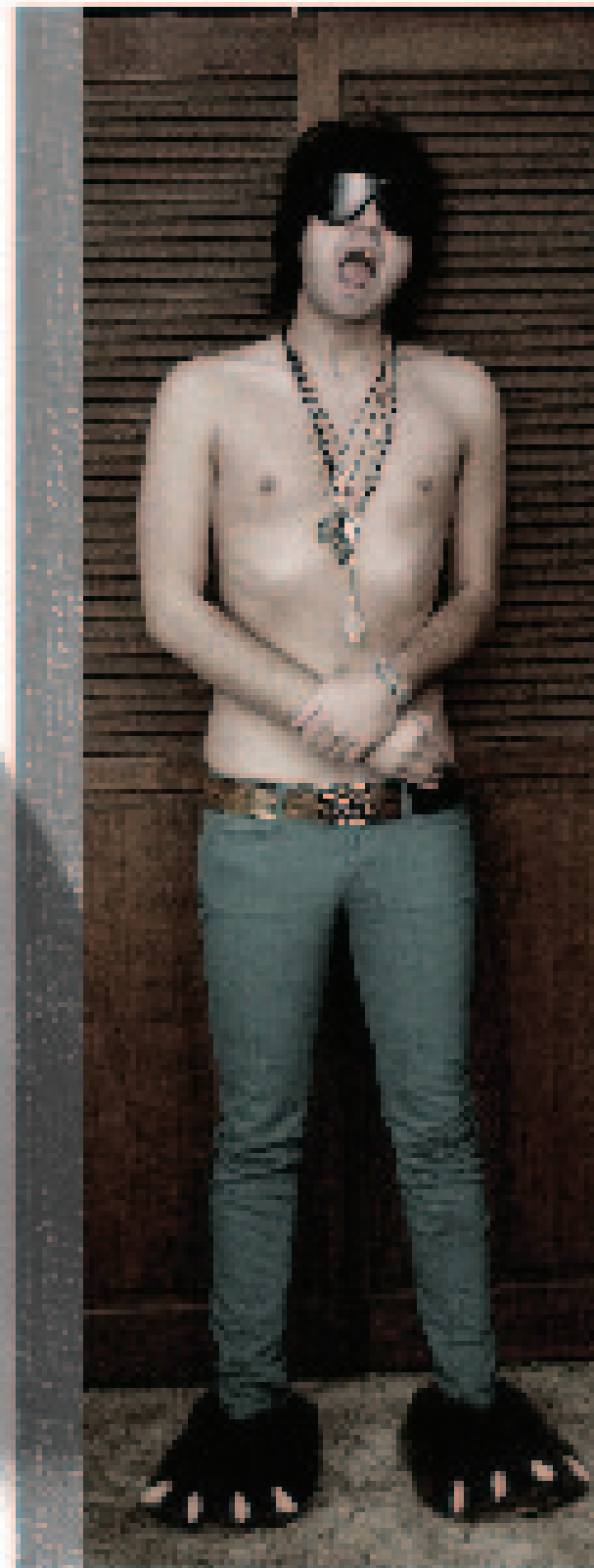


## Max Louis Miller

- Age: 24. November 18th 1984. I don't accept presents.
- Location: Currently nomadic. Originally from Nevada City, CA.
- Quote: "Your past is just a story. And once you realize this it has no power over you." -adapted from Chuck Palahniuk's invisible monsters
- Music: Death From Above 1979, Justice, MGMT, Crystal Castles, Girl Talk, Kavinsky, Cut Copy, Elliott Smith, John Frusciante, Ming & Ping
- Video: patchwork patterns. Original neoproto blue box.
- Food: vietnamese pho or Thai
- Reading: Chuck Palahniuk
- Website: it was missingtoof.com. But I think they died.
- Respectable people: Terry Richardson, Richard Avedon, Dave Kinsey, Andy Warhol, Dave Kinsey, Sebastian Kim
- A few sentences about your work and why you do it:

Those who know me know I don't take my work with any seriousness and a fine art ideal is the furthest thing from my mind when I'm working.

And yet I find the process of creating is an integral part of who I am. Why make art? Why create anything at all? Because I have to. When I was growing up I did it for myself just to see what I can come up with, and that's honestly still the reason I do it. I don't know who I'd be if I didn't and I have no idea how else I'd express my frustrations with our consumerist culture combined my own hypocritical lust for anything with an absorbant price tag.

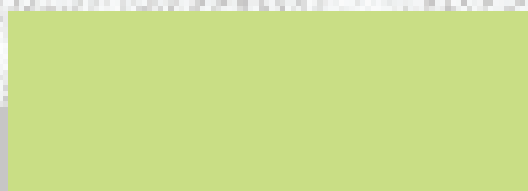


## Carey Quinton Haider

- Age: 144 in dog years.  
My birthday is March 20, 1984 and I gladly accept presents.  
You can send them to:  
Carey Haider  
2531 S.E. LaMesa Pl.  
Gresham, OR 97080
- Location: Portland, Oregon's fanny pack, or should I say Oyster; Gresham, OR
- Quote: "All the cute girls ask me what's the best side..duh bitch it's the westside."
- Music: Babyshambles, Joe Walsh, Lil Wayne, The Clash, Johnny Thunders
- Video: Gummo, Baraka, Detroit Rock City
- Food: Pizza, Mashed Potatoes, Chicken Strips
- Reading: Motley Crue "The Dirt"
- Website: www.blacktooth.org and www.craigslist.com
- Respectable people: My grandmother, rest her soul.
- A few sentences about your work and why you do it:

I would say my work is being bored on a friday night. It's a collage of things I've stuffed under my bed over the years, drawings that look like a retard drew them(I did bad in art classes), and finally an experiment due to I never know how something is going to turn out because it keeps morphing into something else. I make art cause what else would I do? My first job was at Burger King and I couldn't even figure out how to use the register. My mom blames me being retarded on the school switching my kindergarten teacher every month. Thanks mom! Another day at the office...

JIB





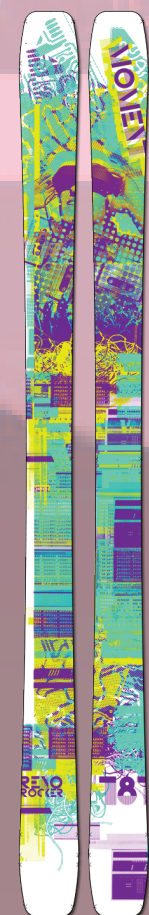
## RENO JIB

symetrical park slayers

The Reno Jib is true to it's name - catering to all park skiing aspects and achieving its purpose through sound engineering and tested materials. It's completely symmetrical design adds balance to spinning, sliding rails and anything switch. The Jib's UHMW sidewalls, Aspen/Ash core laminates add durability and unmatched liveliness. We make jib skis right.

Artist: Max Louis Miller

LENGTH	TIP-WAIST-TAIL	RADIUS	EFF. EDGE
156	111 - 86 - 111	15.3	1240
166	111 - 86 - 111	17.9	1340
171	111 - 86 - 111	19.3	1390
176	111 - 86 - 111	20.7	1440
181	111 - 86 - 111	22.1	1490
186	111 - 86 - 111	23.6	1540



## ROCKER

backwards camber for more fun

Our Rocker is the industry's premier rockered park ski. Its symmetrical dimensions, tip taper, snowboard-inspired continuous flex and rockered profile are worth its reduced swing weight in the park and off-piste versatility. Lower swing weight means bigger spins. Add the buttering and no-catch benefits of taper and early rise and this ski covers everything. The Rocker has UHMW sidewalls around our Aspen/Ash wood core under triax fiberglass and basalt with our most durable topsheet yet.

Artist: Max Louis Miller

LENGTH	TIP-WAIST-TAIL	RADIUS	EFF. EDGE
171	114 - 92 - 114	19.1	1300
181	114 - 92 - 114	22.1	1400

## NIGHT TRAIN

killer in the dark

The Night Train is the one-ski-quiver. Since the creation of super-sidecut, twin-tip, ultra fatty and now rockered skis - you've got nine pair of sticks hanging in the garage just to get through a season. Start purging your collection and put it toward the Night Train. Lay down carves and pivot powder turns on the same day with the same ski. Early taper, early rise, rocker, traditional sidecut and twin tipped, the Night Train excels in absolutely every snow condition. It's the expert-of-all trades - powder, hardpack, and park. You need to ski it to believe it.

Artist: Carey Haider

LENGTH	TIP-WAIST-TAIL	RADIUS	EFF. EDGE
171	140 - 123 - 135	20.9	1100
181	140 - 123 - 135	24.9	1200
186	140 - 123 - 135	27.4	1260



# FREERIDE

## BIBBY PRO

B.C. everything from Josh himself

We live and hand-make skis at a factory in Reno, Nevada. Josh Bibby lives in British Columbia and skis a lot of powder there. The Bibby Pro is our collaboration. Just weeks after joining our team, he was here and had prototypes. We've since been in the lab trading ideas and materials making prototypes for Josh to test. That's how we ended up with two final models – a playful backcountry jib ski at 186 cm and big mountain board at 190 cm.

The 186 bears a subtle traditional sidecut and rockered camber, solid under foot and softer toward tip and tail. It is like a buttery park ski for backcountry jibbing thanks to a carefully designed core profile. The Bibby 190 skis solid for big-mountain steeps with increased underfoot camber and stiffness. The tails are further reinforced to withstand big cliffs and airs. Both models have solid UHMW sidewalls with triaxial fiberglass and basalt reinforcement layers. Choose your poison.

Artist: Carey Haider

LENGTH	TIP-WAIST-TAIL	RADIUS	EFF. EDGE
186	143 - 115 - 134	21.9	1430
190	143 - 118 - 134	26.7	1520





# FREEBIRD

turning has never been so good

The Freebird actually started as a park ski. The more we rode it, the more we missed that feeling of a great turn. Our mission changed. Now the Freebird has the most sidecut and aggressive traditional camber of any ski in our line. Its crisp and snappy turn comes from our pine/aspens core and a combination of triaxial fiberglass and UHMW sidewalls. At 85 mm in the waist, the Freebird lives up to its name – unrestricted skiing anywhere on the mountain.

Artist: Jason Wheeler

LENGTH	TIP-WAIST-TAIL	RADIUS	EFF. EDGE
166	119 - 85 - 111.5	16	1380
176	119 - 85 - 111.5	18.3	1480
182	119 - 85 - 111.5	19.8	1540
192	119 - 85 - 111.5	22.5	1640



# TAHOE

everything - everywhere

The Tahoe is to skiing what all-wheel drive is to your car. When mid fats hit the market as the craziest powder skis ever they took over the radical sidecut and camber of the super-sidecut class of the 90s. Those fat skis are now our daily drivers. The Tahoe is built from the base up with UHMW sidewalls, Aspen/Pine core and rigid fiberglass sheets under and exceptionally durable topsheet layer. The result is an easy-to-drive and reliable ski to take you everywhere on the mountain.

Artist: Carey Haider

LENGTH	TIP-WAIST-TAIL	RADIUS	EFF. EDGE
170	127 - 96 - 118	17.7	1370
180	127 - 96 - 118	21.1	1490
188	127 - 96 - 118	23.2	1560

# RUBY

a sparkling gem

The Ruby represents Moment well; powder, powder, maybe more powder and everything between our next powder run. Mama said there would be days like this. Pow is harder to come by - either tracked out or just fewer days. The Ruby will be your rock during those hard times. The 180 is wide and stiff enough for sketchy conditions when you need it most. The 188 has a slightly softer profile for more fun in the deep while the 190 has a smaller tail and stiffer profile for directional charging. Rely on our UHMW sidewalls, aspen/pine core and hand-made lay-up process.

Artist: Carey Haider

LENGTH	TIP-WAIST-TAIL	RADIUS	EFF. EDGE
170	139 - 112 - 130	20.8	1330
180	140 - 110 - 130	22	1480
188	140 - 110 - 130	24.4	1560
190	140 - 112 - 131	27.4	1640



# GARBONES

stiffer than a 2x4

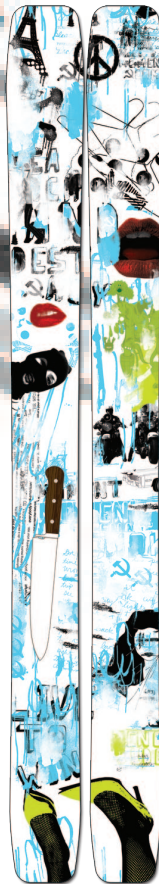
Big ones – he's got them. They are a prerequisite to win the 2008 Subaru Squaw Valley USA Freeskiing Open. Craig Garbiel works with rocks over summer and rocks the big-mountain competitions in winter. We wanted to make him a pro model because he needs one. He required a rigid and stable platform for massive air and impact in absolutely any condition - plus float and control. The Garbones has an early-rise nose for float, 2 layers of triaxial fiberglass and an aspen/pine core.

Artist: Carey Haider

LENGTH	TIP-WAIST-TAIL	RADIUS	EFF. EDGE
182	130 - 105 - 119	31	1570
192	130 - 105 - 119	35	1670







## COMI

fatter than your girlfriend

The Comi is big, but it's no tank. The fat 186 cm turns like a nibble skinnier ski thanks to a careful flex and core profile. Deep snow, straight lining and high speeds will make you and the 186 Comi right at home. Simplicity is what makes this ski so great.

The 192 cm is a different story. The increased length requires more technology. We added a swallow tail, two-stage rocker tip profile and stiffened the nose. Both models are laid up by hand here in Reno with UHMW sidewalls triaxial fiberglass. Two soldiers – same mission.

Artist: Carey Haider

LENGTH	TIP-WAIST-TAIL	RADIUS	EFF. EDGE
186	160 - 135 - 145	34.5	1540
192S	160 - 135 - 145	34.5	1620



## DONNER PARTY

reverse sidecut never tasted so great

The Donner Party is based off the original McConkey reverse-sidecut, water-ski-looking thing he made at Squaw almost ten years ago. The design remains tested and true with sidewall construction, modified reverse sidecut and three-stage rocker, making this the most fun snow surfing ski on the planet. The Donner Party slashes like a shark, thanks to overall light weight and reduced swing weight. We make it for one reason – powder!

Artist: Carey Haider

LENGTH	TIP-WAIST-TAIL	RADIUS	EFF. EDGE
186	135 - 140 - 137 - 130	0	750

# WOMEN'S





## SPADE

good looking turns

Turning will never go out of style. It's a ton of fun, and the feeling never gets old. That's why the Spade has the most sidecut and camber of any other women's ski in the Moment line up. Unlike other models with the same goal, we increased all width dimensions so you don't sacrifice float for arc on hard pack and groomers. Like all our skis, the Spade is assembled by hand with UHMW sidewalls, an aspen/pine composite core and triaxial fiberglass. Count on the Spade every time.

Artist: Amber Gutry

LENGTH	TIP-WAIST-TAIL	RADIUS	EFF. EDGE
156	119 - 85 - 111	13.7	1280
166	119 - 85 - 111.5	16	1380
176	119 - 85 - 111.5	18.3	1480



## STILETTO

symmetrical park beauties

Marketing says women are into fashion. Well function is fashion. That's why the Stiletto is compositionally identical to our flagship men's park ski - same core, shape and materials. We didn't change anything but the size availability. The Stiletto's symmetrical shape and flex create a balanced experience riding switch, airing and on rails. Lively pop and the most durable sidewall available make this ski very stylish.

Artist: Max Louis Miller

LENGTH	TIP-WAIST-TAIL	RADIUS	EFF. EDGE
156	111 - 86 - 111	15.3	1240
166	111 - 86 - 111	17.9	1340
171	111 - 86 - 111	19.3	1390



## SIERRA

go boldly

Confidence is always in style. Be confident your skis will never let you down. The Sierra is our response to the staggering number of emails and phone calls asking for a sturdier women's all-mountain ski. Based off the Tahoe, this model is the mid fat for our women's line. Hand-pressed at our Reno factory with UHMW sidewalls and lightweight aspen/pine core, the Sierra is shaped to travel anywhere on the mountain in any snow condition.

Artist: Carey Haider

LENGTH	TIP-WAIST-TAIL	RADIUS	EFF. EDGE
160	127 - 96 - 118	15.2	1270
170	127 - 96 - 118	17.7	1370



## PIKA

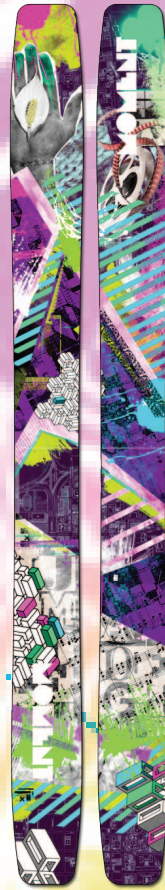
ski like a girl?

Why would you ski like a girl - or anyone else for that matter? Ski how you want. And if you're looking at the Pika you have no doubts about what kind of skier you are. Like Jackie, you're charging harder everyday in every imaginable condition. Like its brother the Ruby, Pika feels soft in the powder and solid in the crud, hard pack and groomed snow too. Pika's performance comes from a strong camber and medium profile with UHMW sidewalls around its pine/aspen core under triaxial fiberglass.

Artist: Max Louis Miller

LENGTH	TIP-WAIST-TAIL	RADIUS	EFF. EDGE
160	139 - 112 - 130	17.8	1230
170	139 - 112 - 130	20.8	1330





## REAGAN

super fat rockered fun

Apparently skiing like a girl meant sinking on deep powder days. Not anymore. You don't even need to ask. We've been on this project for a while. With dimensions like 140-123-135, rocker and early taper, you can take one healthy slash turn through any notion of what skiing like a girl should be. When you're done, slice through the glass ceiling with traditional camber and sidecut. Our UHMW sidewalls and pine/aspen cores under triaxial fiberglass give the Reagan all the float of a rockered ski only matched by its carving on hardpack.

Artist: Max Louis Miller

LENGTH	TIP-WAIST-TAIL	RADIUS	EFF. EDGE
170	140 - 123 - 135	20.9	1100
180	140 - 123 - 135	24.9	1200



## MOWGLI

SPREAD, TWISTER, DAFFY

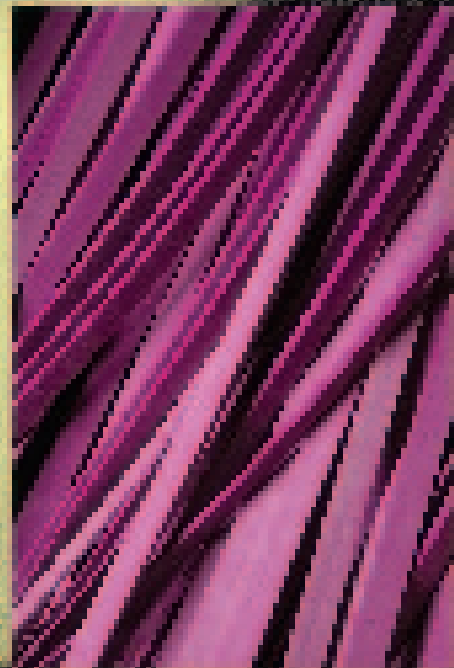
Shelly Robinson is one of the world's premier mogul skiers on the U.S. Ski Team ripping on these boards. The Mowgli is thinner with very little sidecut to bounce through the bumps. Aspen/Ash blend woods make up the liveliest cores available. The tails are reinforced for added pop, setting jumps and landing. It takes Shelly to the podium and it can for you too.

Artist: Max Louis Miller

LENGTH	TIP-WAIST-TAIL	RADIUS	EFF. EDGE
150	92 - 68 - 83	20.6	1260
160	92 - 68 - 83	24	1360
170	92 - 68 - 83	28	1460
170S	92 - 68 - 83	28	1460
175	92 - 68 - 83	29.7	1510



# TECHNOLOGY



**Tri-axial fiberglass** provides torsional stiffness and overall strength to our skis.

**Basalt** - Basalt fiber is a weave we use on our skis that take a beating. It has higher strength properties and better damping attributes than fiberglass. It is also a lot cleaner and safer for humans. It's made using a high temperature process without the use of nasty toxins like fiberglass.

**Resin** - formulated especially for our skis we developed a resin with our manufacturer that provides maximum adhesion and durability. It's going to keep your skis together better than anything else out there.

**Rubber foil** - Our rubber foil layers absorb vibration in the spots your skis need it most.

**Topsheets** - This year we have several new topsheets providing more durability against chipping and scratching. They also make our graphics look better than ever.

**Edges** - Our edges come from Austria to our specifications to be hardened at 48 Rockwell. From there we provide in-house heat treating by annealing to make them last longer in the park.

**Bases** - Our extra thick Durasurf Sintered 4001 bases can take a beating while still being fast. They are harder and have a better wax absorption than extruded bases. Also, they allow for the best base graphics on the market.

**Sidewall** - Our sidewall is made out of the same material as our base. It's durable, light and won't crack like other ABS sidewalls or chip like wood sidewall.

**Core** - Our vertically laminated cores are made out of hand picked Aspen, Pine and Ash. We have tested the "same" type of wood from different forests around the United States and what we get works the best and saves on weight.



# SOFTGOODS



BUTTON-UP HOODIE



DISCO FEVER



DEER HUNTER



NIGHT TRAIN



KEYBOARD



BINOCS



COWBOY

100% Fine Jersey cotton construction. All shirts come in size S-XL  
All shirts manufactured and screenprinted in the USA.



*Josh Bibby*  
*Cedric Tremblay-Fournier*  
*Shelly Robertson*  
*Craig Garbiel*  
*Jackie Paaso*  
*Sean Hartel*



MOMENT SKIS  
Handmade in Reno, NV

2530 Sutro St. Suite #1  
Reno, NV 89512

T: (775)527-1595  
F: (775)996-1852  
info@momentskis.com

[momentskis.com](http://momentskis.com)



OFFICIAL SUPPLIER  
SINCE 1968