



REAL GEAR _ REAL SKIING _ ELAN SKIS 0708 _

Our complete line of skis for 0708 includes high-performance racing skis and floating powder freeride skis, and everything in between. Simply check out the collection overview on page 8 & 9 for a comprehensive understanding of our extensive offering.

ONE FOR ALL _ INTERNATIONAL TEAM _

GLEN PLAKE _ DOING IT HIS WAY

The U.S.A's Glen Plake is considered by many to be the most recognizable skier in the history of the sport – a true living legend. Famous the world over, Glen has been utterly dedicated to pushing the progression of freeskiing over the past two decades. Armed with his trademark Mohawk haircut and enthusiasm for life, this avant-garde Californian has played starring roles in numerous iconic ski films. Having recently joined forces with Elan Skis, Glen remains 100% committed to steering freeskiing's evolution.

DAVO KARNIČAR _ HERO OF HEIGHTS

Hailing from Slovenia, Davo Karničar enjoyed a distinguished competitive alpine ski career before turning his attention to mountaineering and alpine descents. The Slovene has close to 1,500 alpine ascents and ski descents to his name.

Arguably, Davo's greatest achievement is his completion of the 7 Summits Project, which saw him ski down the highest peak on each of the world's seven continents. Working together with Elan Skis, Davo continues to push the boundaries of human achievement.

ANDRAŽ POGLADIČ _ SKIING'S WONDER BOY

Andraž Pogladič could very well be one professional skiing's next big things. The 14-year-old Slovene schoolboy is already aiming for the top, and won't be satisfied until he climbs onto the top step of an Olympic podium. Determined to reach his goals no matter what, this youngster is dedicated to training and staying healthy if it means crossing the finish line in 1st place. Off the mountain, Andraž enjoys mountain biking and chilling out listening to some good tunes. Watch out for this boy!

CHRISTIAN MAYER _ FUELED FOR SPEED

35-year-old Austrian professional alpine skier Christian Mayer climbed to the top of his first World Cup podium in 1993 at the tender age of 21. Since then, the fearless Giant Slalom specialist has claimed 25 further podium places as well as 2 Olympic medals, making him one of the most dominant forces in the sport. A model of endurance, Christian uses Elan Skis to beat the clock. Christian enjoys spending time with his son when he's off the mountain, as well as racing fast cars.

KIM REICHHELM _ QUEEN OF STEEPS

North American Kim Reichhelm has been living the dream for years, waking up each morning to do something she truly loves. Kim spent many years at the summit of competitive skiing and now runs Kim Reichhelm's Ski Adventures. The Elan team skier rates her 5 years as part of the US ski team and her 2 World Freeskiing Championship titles as standout career achievements, and is also the only skier to have won the South American, US and World Freeski Championships in one season.

Elan Skis works tirelessly to deliver the ultimate skiing sensations on the mountain.

In order to produce the very best ski products on the market, we have assembled a world-class team of professional skiers and ambassadors as part of our rigorous research and development program. Their input and involvement plays a critical factor in the superior nature of all our skiing equipment.

INGEMAR STENMARK _ KING OF CHAMPIONS

Ingemar Stenmark is widely recognized as the greatest skier of all time, having won more competitions than any other man, including a total of 86 World Cup races. Using Elan Skis, the 'Silent Swede' won the Overall World Cup title three times in a row, and 4 World Championship medals, including 3 gold medals. Ingemar climbed the Olympic podium on no fewer than 3 occasions, claiming gold twice. With his reputation as a ski legend firmly intact to this day, Ingemar continues to be involved in Elan's R&D program.

URŠKA HROVAT _ FIRST LADY

Slovenia's Urška Hrovat is a former World Cup winner, and one that enjoyed several years at the pinnacle of professional alpine racing during the 1990's. As one of the most promising and progressive skiers of her generation, Urška won several World Championship and World Cup medals at the peak of her career. Today, Urška can still be found in the thick of the action, working as project manager for Elan's female-specific W Studio. With Urška behind the wheel, the evolution of women's skiing is in the safest of hands.

MORE THAN A BUSINESS _
THE ELAN HEADQUARTERS _



MATJAŽ ŠARABON _ LEADING FROM THE FRONT

Matjaž Šarabon is a man of unbridled ambition and vision. The 43-year-old President and CEO of Elan Skis is truly passionate about the sport of skiing, having enjoyed a distinguished competitive career that culminated in his selection as a fore-runner in the 1984 Sarajevo Olympic Games Downhill. Having joined Elan some 15 years ago, this determined Slovene has risen through the ranks thanks to his burning ambition to produce the best ski equipment and establish Elan Skis as the number 1 global ski brand.

No ski company is more committed than Elan Skis when it comes to giving people the world over the best skiing experience of their lives. And while our team of skiers is out on the mountain testing and developing products, you can be sure that the Elan team working behind the scenes, including everyone from product and production managers right through to our CEO, is just as dedicated to the cause.

ALOJZ PEINKIHER _ HOMEGROWN WISDOM

In 1969, local-boy Alojz Peinkihér clocked in for the first time at Elan Skis. 38 years later, the 57-year-old Slovene production worker continues to steer skiing's evolution from within Elan's production facility. With his trademark innovative spirit and passion for high performance skiing, Alojz has played an integral part in the competitive success of the brand over the last 3 decades. Driven by his dream to see Elan skiers on podiums across the world, Alojz has been leading from the front since day one.

LUKA GRILC _ THE PRODUCT PERFECTIONIST

Luka Grilc thrives on the buzz of life in the fast lane. The 30-year-old Elan Skis Product Manager has played an integral part in the development of world-beating equipment since joining Elan 6 years ago. Dedicated to developing the most innovative products boasting truly relevant technologies, this young Slovene cites the Speedwave series victory at the 2006 European Ski Awards as an all-time career highlight. With the specialist expertise of team players like Luka, your enjoyment on the mountain couldn't be in safer hands.



EXPERIENCE SUPERIOR TECHNOLOGY _
SKI NAVIGATOR _

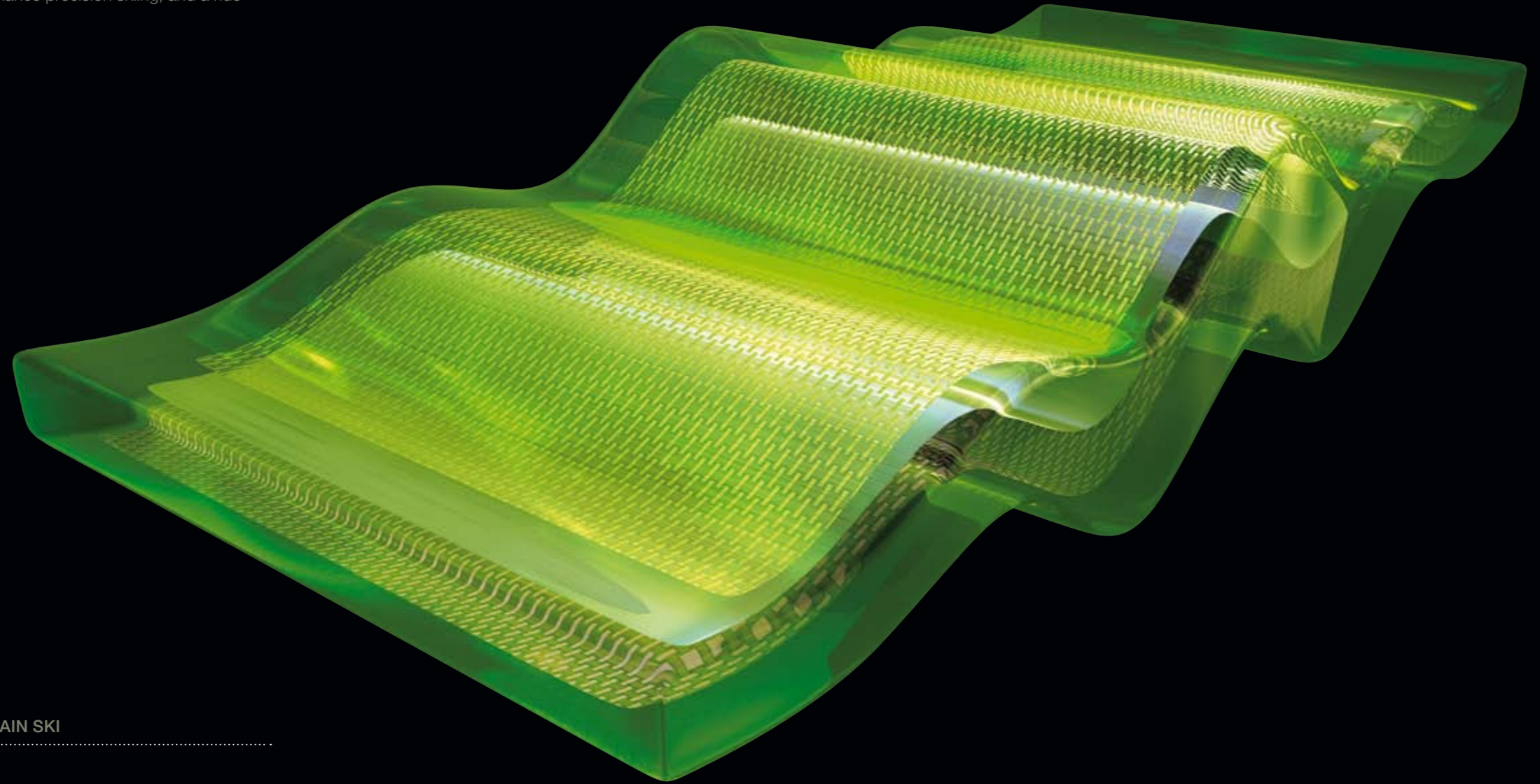


INDEX _

| | |
|-----------------------------|--|
| Intro | 02-03 |
| International Team | 04-05 |
| The Elan Headquarters | 06-07 |
| Ski Navigator | 08 |
| WaveFlex™ | 10-11 |
| PlusTech | 12-13 |
| SPEEDWAVE SERIES | Speedwave 14 / Speedwave 12 / Speedwave 10 / Speedwave 8 14-17 |
| MAGFIRE SERIES | Magfire 14 / Magfire 12 / Magfire 10 / Magfire 8 18-21 |
| GS & SL SERIES | GS World Cup / GSX Race / GS Race 24-25 |
| | SL World Cup / SLX Race / SL Race 26-27 |
| M PRO FREERIDE | 1111 Quad One / 999 Wood / 888 Alu 28-31 |
| M PRO FREESTYLE | The Zenmaster / The Revert / The Code / The Zen 32-35 |
| IT'S A WOMAN'S WORLD | W Studio 36-37 |
| | Woman's Technology 38 |
| LTD PROJECT | Free Spice / M0' Spice 39 |
| SPICE SERIES | Wave Spice / Mag Spice / My Spice / Wild Spice 40-43 |
| MAGIC SERIES | Speed Magic / Wave Magic / Black Magic / Silver Magic 44-47 |
| FLOW SERIES | Flow 8.1 / Flow 6.1 / Flow 4.1 48-51 |
| | Flow 8.2 / Flow 6.2 / Flow 4.2 52-53 |
| JUNIOR RACE SERIES | RCG / RCS / RCX / RC Race 54-56 |
| JUNIOR SERIES | Formula / Spicy 57 |
| | Spidy / Quinny / Champ 58 |
| MATTEL | Hot Wheels / Barbie 59 |
| SPECIAL SERIES | Freeline Track / Expo Orange Track / Vario Orange / Vario Blue 60-61 |
| POLES | Pole Series 62-65 |
| ACCESSORIES | Helmets / Bags 66-67 |
| TECHNOLOGY | Technology Systems / Technology Torsion 68-69 |
| | Technology Cores 70-71 |
| | Technology Reinforcement / Constructions 72-73 |
| OVERVIEW | Collection Overview 74-75 |
| | Distributors 76 |

EVOLUTION LEAPS FORWARD _
WAVEFLEX TECHNOLOGY _

Elan's ground-breaking WaveFlex™ technology combines a softer ski flex with enhanced torsional stiffness, allowing skiers to enjoy all the benefits of high performance precision skiing, and a ride that's as smooth as butter.



SPEEDWAVE
 SPEED CARVING SKI

MAGFIRE
 ALL TERRAIN SKI

ON SLOPE PERFORMANCE SKIS _

ALL-MOUNTAIN PERFORMANCE SKIS _

Ski types

Ski types

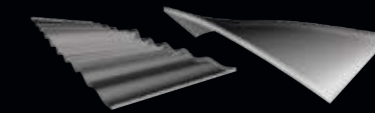
**SKI THAT ENABLES SHORT AND LONG
 TURNS** _

**MAXIMUM VERSATILITY ON AND OFF
 SLOPE** _

Consumer benefit

Consumer benefit

**WAVEFLEX™
 TECHNOLOGY**



Torsional Stability

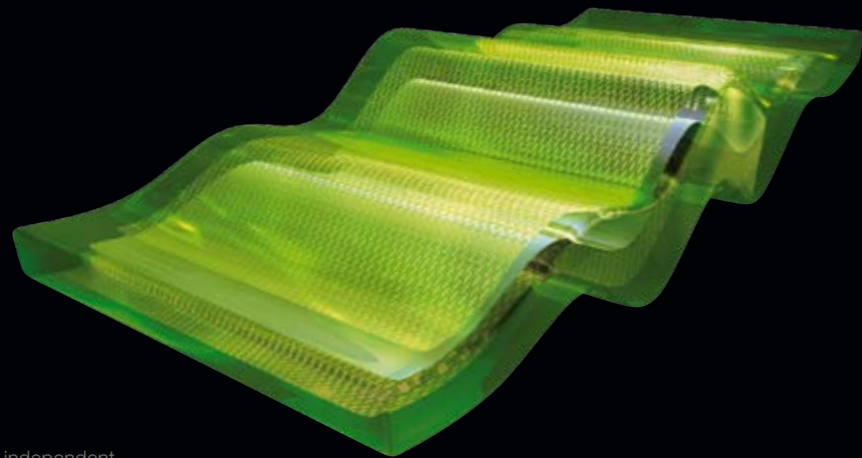


Softer Flex

PURE SIMPLICITY _
PLUS TECH SYSTEM _

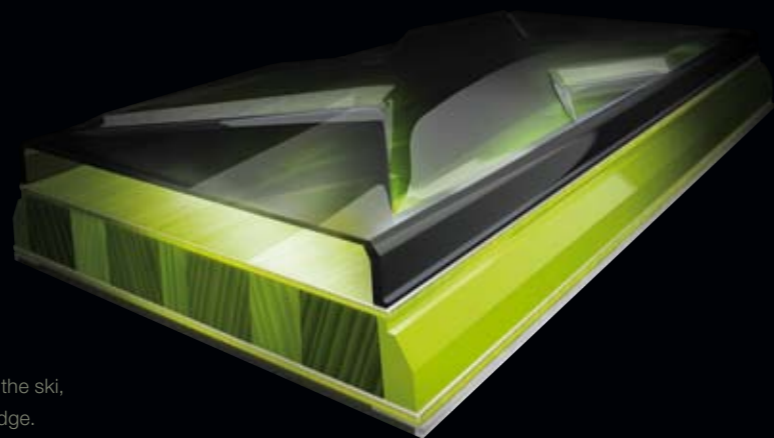
Elan Skis has always been committed to developing technologies that make a real difference where it matters most: at your feet, on the mountain.

The only thing we keep in mind is your enjoyment on skis. Plus Tech delivers on our commitment. Now that's simplicity.



+ WAVEFLEX
TECHNOLOGY

Never before has a ski design allowed the separation and independent optimization of longitudinal and torsional flex properties. Characterized by the wavy profile, WaveFlex™ Technology provides smooth longitudinal flex and powerful edge hold for versatile high performance skiing. Featured in the Speedwave Series (14, 12, 10, 8) skis, Lady models (Wave Magic, Speed Magic, Wave Spice) and Magfire 14 and Magfire 12 skis.



+ WORLD CUP
CONSTRUCTION

World Cup Racing (WCR) sidewalls are vertical and run the length of the ski, ensuring that the skier's power is transferred directly from edge-to-edge. Featured in the Race Series (GSX WC, GSX, GS, SLX WC, SLX, SL) and the Junior Race Series (RCG, RCS, RCX)



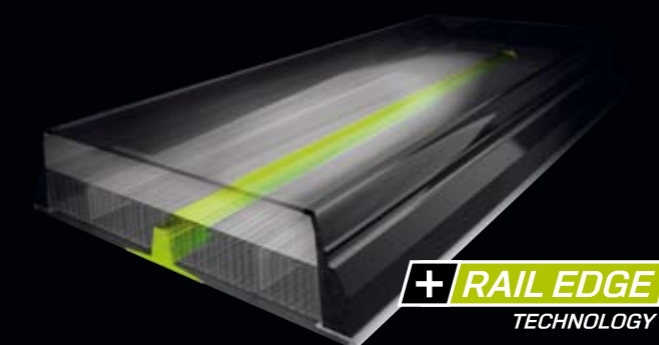
+ FUSION
SYSTEM

The Fusion System is the world's first integrated ski binding system, paving the way for faster turn initiation and enhanced edge-to-edge responsiveness. The Fusion Lady is positioned a little further forward to accommodate the intricacies of the female anatomy and skiing position. Featured in the GSX, GS, SLX, SL Skies, the Magfire Series (14, 12, 10, 8), Flow 8 skis, Wave Magic, Speed Magic, Mag Spice and Wave Spice Skis.



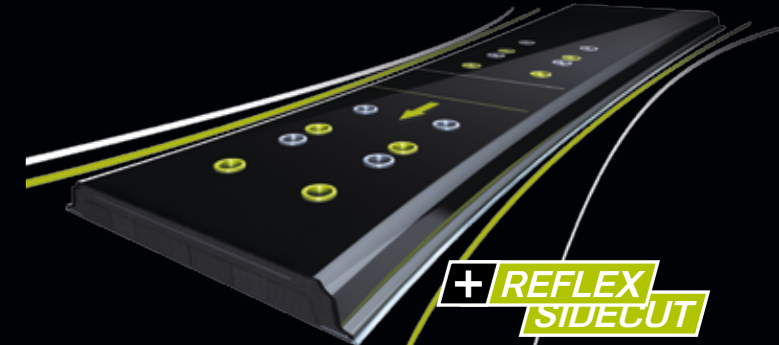
+ SIDEWALL
CONSTRUCTION

Sidewall Construction (SWC) features a tip-to-tail woodcore which is separately shaped for each model and size. Together with the ABS sidewalls this construction gives the ski a softer flex pattern and enhanced edge-to-edge power transmission. Featured in the Freeride Series (1111, 999, 888) and The Code skis and The Zenmaster skis.



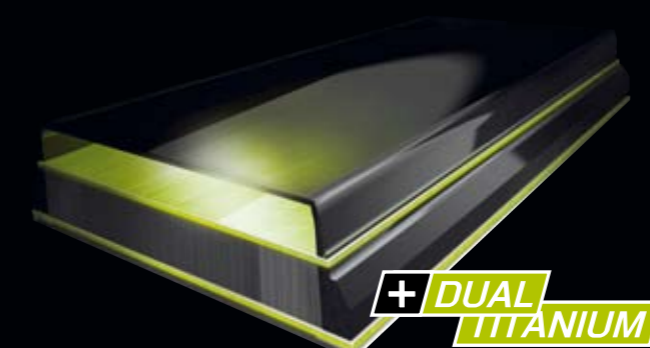
+ RAIL EDGE
TECHNOLOGY

Rail Edge Technology protects the ski from rail-induced damage, and also allows more controlled sliding performance on rails. Featured in The Revert Skis.



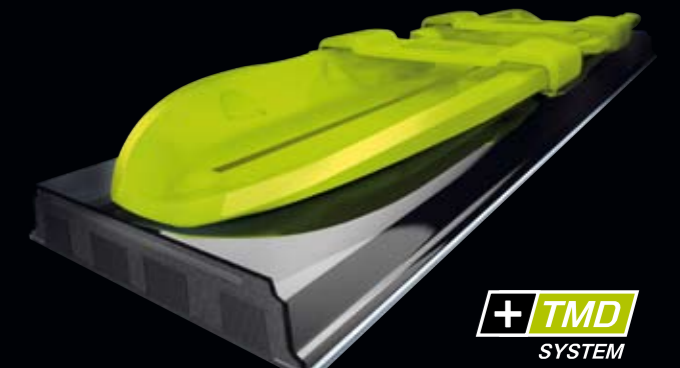
+ REFLEX
SIDE CUT

The female-specific Reflex Sidecut is symmetrical, meaning that the binding can be positioned centrally. This distributes power equally for even more effortless turn initiation and execution. Featured in Black Magic and My Spice skis.



+ DUAL
TITANIUM

Ski racing-specific Dual Titanium Technology empowers the ski with enhanced edge control in all snow conditions thanks to a more harmonious flex pattern and superior responsiveness from edge-to-edge. Featured as Plus Tech in the 888 Alu.



+ TMD
SYSTEM

An innovative lightweight binding performance system provides enhanced turn initiation at all speeds and in all snow conditions. The free flex pattern and precise binding stand height results in improved control through the turn. Featured in the Flow 6 and 4 Skis, Wild Spice, Silver Magic, RC race TMD and Formula TMD.

NEXT GENERATION MOVES FORWARD _
SPEEDWAVE SERIES _



The Speedwave Series has been specifically developed for high performance on-slope skiers. Redefining the meaning of precision skiing, these skis deliver speed and stability in equal measure – in both long and short turns.

FOR LONG AND SHORT TURNS _
SPEEDWAVE SERIES _



SPEEDWAVE 14 _ GREEN/BLACK FUSION



Construction: WaveFlex™, RST Sidewall, Laminated Woodcore, DualTi, Isometric Topsheet

Length (Radius): 152 (10-16) 160 (10-16) 168 (10-16) 176 (10-16)
Geometry: 116/70/105 116/70/105 116/70/105 116/70/105

Binding: ELD 12.0 F black/green

Sales Code: AB0.354

SPEEDWAVE 12 _ BLACK/RED FUSION



Construction: WaveFlex™, RST Sidewall, Laminated Woodcore, MonoTi, Isometric Topsheet

Length (Radius): 152 (10-16) 160 (10-16) 168 (10-16) 176 (10-16)
Geometry: 116/70/105 116/70/105 116/70/105 116/70/105

Binding: ELD 11.0 F black/red

Sales Code: AB1.456

SPEEDWAVE 10 _ BLACK/RED FUSION



Construction: WaveFlex™, Shell Construction, Corelock Woodcore, Lithium Technology

Length (Radius): 152 (10-16) 160 (10-16) 168 (10-16) 176 (10-16)
Geometry: 115/70/103 115/70/103 115/70/103 115/70/103

Binding: EL 11.0 F black/red

Sales Code: AB2.356

SPEEDWAVE 8 _ BLK/GRN, BLK/SILV FUSION



Construction: WaveFlex™, Shell Construction, Corelock Woodcore

Length (Radius): 152 (10-16) 160 (10-16) 168 (10-16) 176 (10-16)
Geometry: 115/70/103 115/70/103 115/70/103 115/70/103

Binding: EL 10.0 F black/green
EL 10.0 F black/silver

Sales Code: AB3.457 (black/green), AB3.458 (black/silver)



WAVEFLEX ON FIRE _
MAGFIRE SERIES _



The Magfire Series, featuring Elan's innovative WaveFlex™ technology, is aimed at all-mountain skiers searching for maximum versatility on both groomed runs and off piste. A true master. In all conditions.

MULTI-CONDTION ALL-IN-ONE _
MAGFIRE SERIES _

MAGFIRE 14 _ FUSION



Construction: WaveFlex™, RST Sidewall, DualTi, Laminated Woodcore, Isometric Topsheet

| | | | | | |
|------------------|------------|------------|------------|------------|------------|
| Length (Radius): | 152 (11.9) | 160 (13.4) | 168 (15.4) | 176 (17.2) | 184 (19.0) |
| Geometry: | 126/82/109 | 126/82/109 | 126/82/109 | 126/82/109 | 126/82/109 |

Binding: ELD 12.0 F black/orange WB

Sales Code: AD0.451

MAGFIRE 12 _ ORANGE FUSION



Construction: WaveFlex™, RST Sidewall, MonoTi, Laminated Woodcore

| | | | | | |
|------------------|------------|------------|------------|------------|------------|
| Length (Radius): | 152 (11.9) | 160 (13.4) | 168 (15.4) | 176 (17.2) | 184 (19.0) |
| Geometry: | 126/82/109 | 126/82/109 | 126/82/109 | 126/82/109 | 126/82/109 |

Binding: ELD 12.0 F black/orange WB

Sales Code: AD1.355



MAGFIRE 10 _ RED FUSION



Construction: Express, AST Sidewall, MonoTi, Corelock Woodcore

| | | | | |
|------------------|------------|------------|------------|------------|
| Length (Radius): | 152 (10.6) | 160 (11.9) | 168 (13.3) | 176 (14.9) |
| Geometry: | 125/75/109 | 125/75/109 | 125/75/109 | 125/75/109 |

Binding: ELD 11.0 F black/red

Sales Code: AD2.449

MAGFIRE 8 _ YELLOW, BLUE FUSION



Construction: Express, Corelock Woodcore, Lithium Technology

| | | | | |
|------------------|------------|------------|------------|------------|
| Length (Radius): | 152 (11.2) | 160 (12.6) | 168 (14.1) | 176 (15.7) |
| Geometry: | 123/73/104 | 123/73/104 | 123/73/104 | 123/73/104 |

Binding: EL 10.0 F black/orange (Magfire 8 yellow)
EL 10.0 F black/silver (Magfire 8 blue)

Sales Code: AD4.460 (Magfire 8 yellow), AD4.459 (Magfire 8 blue)



E/RACE THE COMPETITION _
GS & SL SERIES _



Elan's heritage in competitive skiing is as rich as the line of race skis in the new collection. The GS Series offers the latest cutting-edge racing technology, providing expert skiers and dedicated racers with all the tools they deserve. Spectacular acceleration and edge-to-edge responsiveness deliver faster turn execution. Meanwhile, skiing professionals and competitive slalom skiers alike will take a big step towards the podium with the SL Series. Elan's high-tech World Cup Race construction empowers the ski with supreme edge hold and dynamic handling.

E/RACE THE COMPETITION _
GS SERIES _

GSX WORLD CUP _ PLATE



Construction: RST Sidewall, Laminated Woodcore, DualTi, race tuning

Length (Radius): 176 (≥23.0) 182(≥23.0) 188 (≥27.0) 191 (≥27.0)

Geometry: FIS approved

Binding: ER 17.0 FF+ black/green

Sales Code: AA0.433



GSX RACE _ GREEN FUSION PRO



Construction: Double Express, RST Sidewall, Response Frame Woodcore, DualTi

Length (Radius): 164 (14.6) 170 (15.4) 178 (18.3)

Geometry: 109/66/98 109/66/95 107/66/95

Binding: ELD 12.0 FP black/green

Sales Code: AA1.419



GS RACE _ BLACK FUSION PRO



Construction: Double Express, RST Sidewall, Laminated Woodcore, MonoTi

Length (Radius): 164 (14.6) 170 (15.4) 178 (18.3)

Geometry: 109/66/98 109/66/98 107/66/95

Binding: ELD 11.0 FP black/green

Sales Code: AA3.421

E/RACE THE COMPETITION _
SL SERIES _

SLX WORLD CUP _ PLATE



Construction: RST Sidewall, Laminated Woodcore, DualTi, race tuning

Length (Radius): 155 (11.6) 165 (12.8)

Geometry: FIS approved

Binding: ER 17.0 FF+ green/black

Sales Code: AA0.431



SLX RACE_ GREEN FUSION PRO



Construction: Double Express, RST Sidewall, Response Frame Woodcore, DualTi

Length (Radius): 155 (11.5) 160 (11.7) 165 (12.0) 170 (12.8)

Geometry: 112/66/102 114/66/104 116/66/106 116/66/106

Binding: ELD 12.0 FP black/green

Sales Code: AA2.350



SL RACE_ BLACK FUSION PRO



Construction: Double Express, RST Sidewall, Laminated Woodcore, MonoTi

Length (Radius): 155 (11.5) 160 (11.7) 165 (12.0) 170 (12.8)

Geometry: 112/66/102 114/66/104 116/66/106 116/66/106

Binding: ELD 11.0 FP black/green

Sales Code: AA5.424

DRAW YOUR OWN LINES _
M PRO FREERIDE _



The M Pro Freeride Series delves deep into the very essence of skiing. Designed to meet the exacting needs of out-of-bounds thrill seekers, this series ticks all the boxes, and then some.

DRAW YOUR OWN LINES _
M PRO FREERIDE _

1111 QUAD ONE _

+ SIDEWALL
CONSTRUCTION

Construction: RST Sidewall, Laminated Woodcore, carbon, fish tail

Length (Radius): 184 (20.3)
Geometry: 161/121/141

Binding: ELD 14.0 black (extra WB added)

Sales Code: AD0.920



999 WOOD _

+ SIDEWALL
CONSTRUCTION

Construction: RST Sidewall, Laminated Woodcore, carbon, wood top, lifted tail

Length (Radius): 163 (22.8) 174 (27.1) 185 (31.3) 193 (34.7)
Geometry: 129/99/119 129/99/119 129/99/119 129/99/119

Binding: ELD 14.0 WB black

Sales Code: AD0.395



888 ALU _

+ DUAL
TITANIUM

Construction: RST Sidewall, DualTi, Laminated Woodcore, alu top, lifted tail

Length (Radius): 159 (16.8) 168 (19.4) 177 (21.1) 186 (23.1)
Geometry: 128/88/108 128/88/108 128/88/108 128/88/108

Binding: ELD 14.0 WB black

Sales Code: AD0.396

UNLEASHED ENERGY _
M PRO FREESTYLE _



Progressive park and pipe assassins put their equipment through hell and high water. The M Pro Freestyle Series always measures up, offering durable, high performance twin-tip skis for the new school freestyle squad.

UNLEASHED ENERGY _ M PRO FREESTYLE _

THE ZENMASTER _

+ SIDEWALL
CONSTRUCTION

Construction: RST Sidewall, Laminated Woodcore, Fibreglass, twin tip

Length (Radius): 165 (19.8) 175 (20.1) 185 (22.9)
Geometry: 120/90/110 122/91/112 124/92/114

Binding: ELD 14.0 WB black

Sales Code: AE0.390

THE REVERT _

+ RAIL EDGE
TECHNOLOGY

Construction: RST Sidewall, Laminated Woodcore, Fibreglass,
Rail Edge Technology, twin tip

Length (Radius): 155 (11.9) 165 (13.5) 175 (16.0) 185 (17.0)
Geometry: 114/75/103 116/76/105 118/78/106 120/80/108

Binding: ELD 14.0 black

Sales Code: AE0.389



THE CODE _

+ SIDEWALL
CONSTRUCTION

Construction: RST Sidewall, Laminated Woodcore, Fibreglass, twin tip

Length (Radius): 135 (10.2) 145 (11.7) 160 (18.4) 170 (21.2) 180 (24.2)
Geometry: 105/73/96 107/74/99 108/76/98 110/78/100 112/80/102

Binding: ER 11.0 black/red

Sales Code: AE1.382

THE ZEN _

Construction: Full Power Cap, Complex Woodcore, twin tip

Length (Radius): 115 (9.0) 125 (11.0) 135 (13.1) 145 (15.5)
Geometry: 102/72/92 102/72/92 102/72/92 102/72/92

Binding: EL 7.0 silver/black

Sales Code: AE3.381



IT'S A WOMAN'S WORLD _
W STUDIO _



The W Studio was created by Elan Skis with the sole aim of driving the progression of women's skiing. Providing female skiers with bespoke, female-specific ski technologies and innovations, the W Studio is doing just that. Under the expert guidance of former World Cup winner Urška Hrovat and former freeskiing champion Kim Reichhelm, the W Studio has focused on satisfying the diverse and complex needs of female skiers the world over. It is this in-depth understanding of skiers and the sport itself has paved the way for the unrelenting research, design and delivery of superior skiing equipment for women of all abilities.

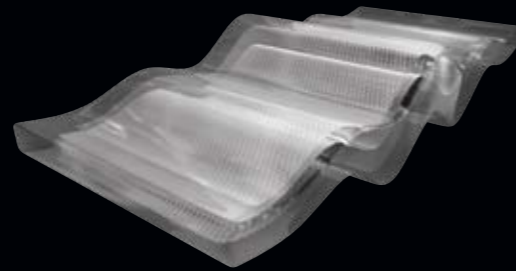
The W Studio's 0708 collection has been developed with a variety of style needs in mind, and is redefining the meaning of technological innovation and versatility. Lightweight ski construction is supported by a female-friendly sidecut and flex pattern, while ultra-responsive edge-to-edge handling provides the skier with unforgettable sensations on the mountain.

[Experience Elan's W Studio. Join the fun.](#)

W STUDIO _ WOMAN'S TECHNOLOGY _

WAVEFLEX™ FOR WOMEN

A softer flex and enhanced torsional stiffness come together to produce fluid and effortless carving performance.



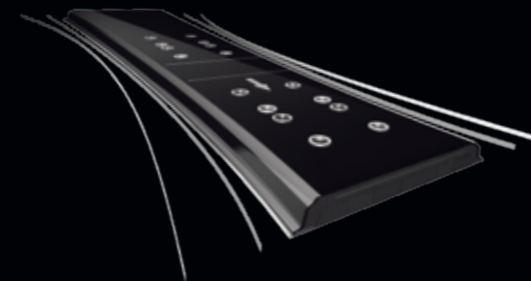
FUSION LADY

Designed to accommodate the intricacies of the female anatomy and skiing position, the binding system is positioned forward on the skis. A small difference in binding position makes a big difference in performance, allowing for more effortless turn initiation.



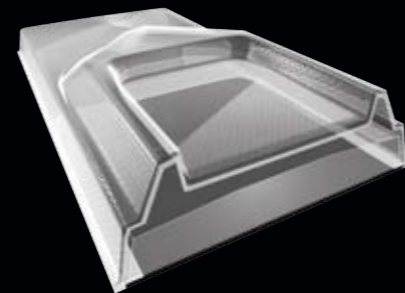
REFLEX SIDECUT

With a central mounting of the binding thanks to the symmetrical shape of the Reflex Sidecut, power is distributed in equal measures resulting in easier turn initiation and execution. Controlled and harmonious carving turns is the end product.



SHELL CORE CONSTRUCTION

A super-lightweight ski construction, featuring pre-shaped load bearing materials that facilitate smooth and direct turn initiation for more effortless carving performance.



W STUDIO _ LTD PROJECT _

FREE SPICE LTD _



Construction: RST Sidewall, Truelite Woodcore, Fibreglass, lifted tail

Length (Radius): 159(16.8) 168(19.4) 177(21.1)
Geometry: 128/88/108 128/88/108 128/88/108

Binding: ERW 11 gold WB

Sales Code: AD0.364

M0' SPICE LTD _



Construction: RST Sidewall, Truelite Woodcore, Fibreglass, twin tip

Length (Radius): 145(11.7) 155(11.9) 165(13.5)
Geometry: 107/74/99 114/75/103 116/76/105

Binding: ERW 11 gold WB

Sales Code: AE1.362



SLICK & SEDUCTIVE _
SPICE SERIES _



The Spice Series, developed specifically to meet the needs of female skiers, provides hip younger skiers of recreational to intermediate level with their perfect mountain accessory.

SLICK & SEDUCTIVE _
SPICE SERIES _

WAVE SPICE _ FUSION



Construction: WaveFlex™, RST Sidewall, MonoTi, Truelite Woodcore

Length (Radius): 152 (11.9) 158 (13.4) 166 (15.4)
Geometry: 126/80/109 126/80/109 126/80/109

Binding: ELD 11.0 Fusion black/orange WB

Sales Code: AC5.371

MAG SPICE _ FUSION



Construction: Express, AST Sidewall, Dualite Woodcore

Length (Radius): 152 (10.6) 158 (11.9) 166 (13.3)
Geometry: 125/75/109 125/75/109 125/75/109

Binding: ELW 9.0 Fusion black/gold

Sales Code: AC8.370



MY SPICE _ FUSION



Construction: Express, Shell Construction, Dualite Woodcore, Reflex Sidecut

Length (Radius): 146 (9.3) 152 (10.5) 158 (11.8) 166 (13.1)
Geometry: 113/70/113 113/70/113 113/70/113 113/70/113

Binding: ELW 9.0 Fusion white/blue

Sales Code: AC1.367

WILD SPICE _ TMD



Construction: Express, Full Power Cap, Monolite Woodcore

Length (Radius): 146 (10.7) 152 (12.2) 158 (13.7)
Geometry: 114/70/100 114/70/100 114/70/100

Binding: ELW 9.0 TMD silver/smoke

Sales Code: AC4.469



SIMPLY GOOD LOOKING _
MAGIC SERIES _



The Magic Series has been developed with the demands of the more discerning, advanced skier in mind, with a focus on exclusivity and classic skiing tradition.

SIMPLY GOOD LOOKING _
MAGIC SERIES _



SPEED MAGIC _ FUSION



Construction: WaveFlex™, RST Sidewall, Truelite Woodcore

Length (Radius): 152 (10-16) 158 (10-16) 166 (10-16)
Geometry: 116/70/105 116/70/105 116/70/105

Binding: ELD 11.0 Fusion black/orange

Sales Code: AC6.375

WAVE MAGIC _ FUSION



Construction: WaveFlex™, Shell Construction, Dualite Woodcore, Lithium Technology

Length (Radius): 152 (10-16) 158 (10-16) 166 (10-16)
Geometry: 115/70/103 115/70/103 115/70/103

Binding: ELW 9.0 Fusion white/blue

Sales Code: AC7.376

BLACK MAGIC _ FUSION



Construction: Express, Shell Construction, Dualite Woodcore, Reflex Sidecut, Lithium Technology, made with CRYSTALLIZED™ - Swarovski Elements

Length (Radius): 146 (9.3) 152 (10.5) 158 (11.8) 166 (13.1)
Geometry: 113/70/113 113/70/113 113/70/113 113/70/113

Binding: ELW 9.0 Fusion black/gold

Sales Code: AC0.374

SILVER MAGIC _ TMD



Construction: Express, Full Power Cap, Monolite Woodcore, made with CRYSTALLIZED™ - Swarovski Elements

Length (Radius): 146 (11.1) 152 (12.5) 158 (14.1)
Geometry: 115/71/100 115/71/100 115/71/100

Binding: ELW 9.0 TMD silver/black

Sales Code: AC3.373



GO WITH THE FLOW _
FLOW SERIES _



The Flow Series, aimed at beginner to intermediate skiers, delivers an effortless skiing experience and exemplary on-slope skiing versatility. Their ear-to-ear smiles at the end of each day will say it all.

GO WITH THE FLOW _
FLOW .1 SERIES _

FLOW 8.1 _ GREEN/WHITE PST FUSION



Construction: Express, PST Sidewall Technology, Corelock Woodcore

Length (Radius): 152 (11.6) 160 (13.1) 168 (14.6) 176 (16.2)
Geometry: 117/71/103 117/71/103 117/71/103 117/71/103

Binding: EL 10.0 Fusion black/green

Sales Code: AB4.378

FLOW 6.1 _ ANTHRACITE/ORANGE TMD



Construction: Express, Corelock Woodcore, Full Power Cap

Length (Radius): 144 (11.1) 152 (12.5) 160 (14.1) 168 (15.8) 176 (17.5)
Geometry: 115/71/100 115/71/100 115/71/100 115/71/100 115/71/100

Binding: EL 10.0 TMD black/orange

Sales Code: AB5.361



FLOW 4.1 _ BLUE/WHITE TMD



Construction: Express, Complex Woodcore, Full Power Cap

Length (Radius): 144 (10.7) 152 (12.2) 160 (13.7) 168 (15.3)
Geometry: 114/70/100 114/70/100 114/70/100 114/70/100

Binding: EL 10.0 TMD black/silver

Sales Code: AB6.511

FLOW 4.1 _ RED/WHITE TMD



Construction: Express, Complex Woodcore, Full Power Cap

Length (Radius): 144 (10.7) 152 (12.2) 160 (13.7) 168 (15.3)
Geometry: 114/70/100 114/70/100 114/70/100 114/70/100

Binding: EL 10.0 TMD black/red

Sales Code: AB6.513



GO WITH THE FLOW _
FLOW .2 SERIES _

FLOW 8.2 _ LIME PST FUSION



Construction: Express, Corelock Woodcore, PST Sidewall Technology

Length (Radius): 152 (11.6) 160 (13.1) 168 (14.6) 176 (16.2)
Geometry: 117/71/103 117/71/103 117/71/103 117/71/103

Binding: EL 10.0 Fusion black/green

Sales Code: AB4.520

FLOW 6.2 _ CARBON TMD



Construction: Express, Corelock Woodcore, Full Power Cap

Length (Radius): 144 (11.1) 152 (12.5) 160 (14.1) 168 (15.8) 176 (17.5)
Geometry: 115/71/100 115/71/100 115/71/100 115/71/100 115/71/100

Binding: EL 10 TMD black/orange

Sales Code: AB5.522



FLOW 4.2 _ ELECTRA TMD



Construction: Express, Complex Woodcore, Full Power Cap

Length (Radius): 144 (10.7) 152 (12.2) 160 (13.7) 168 (15.3)
Geometry: 114/70/100 114/70/100 114/70/100 114/70/100

Binding: EL 10.0 TMD black/silver

Sales Code: AB6.523

FLOW 4.2 _ LAVA TMD



Construction: Express, Complex Woodcore, Full Power Cap

Length (Radius): 144 (10.7) 152 (12.2) 160 (13.7) 168 (15.3)
Geometry: 114/70/100 114/70/100 114/70/100 114/70/100

Binding: EL 10.0 TMD black/red

Sales Code: AB6.525



READY _ STEADY _ GO _
 JUNIOR RACE SERIES _



Skier: Andraž Pogladič

READY _ STEADY _ GO _
 JUNIOR RACE SERIES _

RCG _ RACE PLATE



Construction: RST Sidewall, Laminated Woodcore, Fibreglass, (DualTi)*

| | | | | | |
|------------------|------------|------------|------------|------------|-------------|
| Length (Radius): | 144 (14.2) | 152 (15.2) | 160 (17.1) | 168 (19.1) | 176 (21.4)* |
| Geometry: | 101/65/89 | 101/65/89 | 101/65/89 | 101/65/89 | 101/65/89 |

Binding: ER 11.0 FF+ black/green

Sales Code: AA7.427

RCS _ RACE PLATE



Construction: RST Sidewall, Laminated Woodcore, Fibreglass, (DualTi)*

| | | | | |
|------------------|------------|------------|------------|-------------|
| Length (Radius): | 135 (10.0) | 140 (10.1) | 145 (10.9) | 150 (11.6)* |
| Geometry: | 110/65/97 | 110/65/97 | 110/65/97 | 110/65/97 |

Binding: ER 11.0 FF+ black/green

Sales Code: AA7.446



READY _ STEADY _ GO _
JUNIOR RACE SERIES _

FAST TRACK TO PROGRESS _
JUNIOR SERIES _

RCX _ RACE PLATE



Construction: RST Sidewall, Laminated Woodcore, Fibreglass

Length (Radius): 125 (8.9) 130 (9.8)
Geometry: 104/65/91 104/65/91

Binding: ER 11.0 FF+ black/red

Sales Code: AA8.444

RC RACE _ GREEN TMD



Construction: Express, Full Power Cap, Complex Woodcore, Foiltex

Length (Radius): 110 (6.0) 120 (7.4) 130 (8.9) 140 (12.0) 150 (13.0)
Geometry: 111/68/96 111/68/96 111/68/96 111/68/96 111/68/96

Binding: EL 7.0 TMD silver/black

Sales Code: AF3.401



FORMULA RED, BLUE, GREEN _ TMD



Construction: 3D, Full Power Cap, Synflex Core

Length (Radius): 150 (13.1) 140 (11.2) 130 (9.4)
Geometry: 109/67/95 109/67/95 109/67/95

Length (Radius): 120 (8.6) 110 (7.0) 100 (5.5)
Geometry: 105/67/93 105/67/93 105/67/93

Binding: EL 7.0 / EL 4.5 TMD silver/black

Sales Code: AF5/6.437 (red)
AF5/6.387 (blue)
AF5/6.438 (green)

SPICY _ TMD



Construction: 3D, Full Power Cap, Synflex Core

Length (Radius): 150 (13.1) 140 (11.2) 130 (9.4)
Geometry: 109/67/95 109/67/95 109/67/95

Length (Radius): 120 (8.6) 110 (7.0) 100 (5.5)
Geometry: 105/67/93 105/67/93 105/67/93

Binding: EL 7.0 / EL 4.5 TMD silver/black

Sales Code: AF5/6.559



FAST TRACK TO PROGRESS _
JUNIOR SERIES _

SPIDY _

Construction: Full Power Cap, Synflex Core

Length (Radius): 70 (2.8) 80 (4.0) 90 (5.3)
Geometry: 95/66/86 95/66/86 95/66/86

Binding: EL 4.5 silver/black

Sales Code: AF7.399

QUINNY _

Construction: Full Power Cap, Synflex Core

Length (Radius): 70 (2.8) 80 (4.0) 90 (5.3)
Geometry: 95/66/86 95/66/86 95/66/86

Binding: EL 4.5 silver/black

Sales Code: AF7.394

CHAMP _

Construction: Full Power Cap, Synflex Core

Length (Radius): 70 (2.8) 80 (4.0) 90 (5.3)
Geometry: 95/66/86 95/66/86 95/66/86

Binding: EL 4.5 silver/black

Sales Code: AF7.638



BEAT THAT _
HOT WHEELS _



HOT WHEELS _

Construction: Full Power Cap, Synflex Core

Length (Radius): 100 (6.4) 110 (8.1) 120 (9.9) 130 (10.7) 140 (12.7) 150 (15.0)
Geometry: 97/66/88 97/66/88 97/66/88 100/66/91 100/66/91 100/66/91

Binding: EL 7.5 / EL 4.5

Sales Code: AF5/6.583

BARBIE _

Construction: Full Power Cap, Synflex Core

Length (Radius): 70 (2.8) 80 (4.0) 90 (5.3) 100 (6.4) 110 (8.1) 120 (9.9)
Geometry: 95/66/86 95/66/86 95/66/86 97/66/88 97/66/88 97/66/88

Binding: EL 4.5

Sales Code: AF6/7.582

BE WHAT YOU WANT TO BE _
BARBIE _



© Mattel

THE SHORT OF IT _
SPECIAL SERIES _



FREELINE TRACK _

Construction: Full Power Cap, Synflex Core, twin tip

Length (Radius): 125 (8.5) 135 (10.3)
Geometry: 115/76/105 115/76/105

Binding: ESP 10.0 TRACK

Sales Code: AG4.532



EXPO ORANGE TRACK _

Construction: Full Power Cap, Synflex Core, twin tip

Length (Radius): 99 (7.7)
Geometry: 111/87/100

Binding: ESP 10.0 TRACK

Sales Code: AE3.398

VARIO ORANGE _

Construction: Full Power Cap, Synflex Core, twin tip

Length (Radius): 99 (7.7)
Geometry: 111/87/100

Binding: non-release binding

Sales Code: AE4.397



VARIO BLUE _

Construction: Full Power Cap, Synflex Core, twin tip

Length (Radius): 99 (7.7)
Geometry: 111/87/100

Binding: non-release binding

Sales Code: AE4.533

PUSH IN THE RIGHT DIRECTION _
POLE SERIES _



PUSH IN THE RIGHT DIRECTION _

POLE SERIES _



CARBON PRO _

Color: carbon
Length: 110-135 cm
Tube: Carbon Superlight
Diameter: 16mm
Grip: ergonomic foam
Sales Code: CD0.801



FREERIDE _

Color: silver/green
Length: 95-135 cm
Tube: Alu 7075 F56
Diameter: 16/14mm
Grip: ergonomic bi-density
Sales Code: CD0.804



SPEEDWAVE _

Color: black
Length: 110-135 cm
Tube: Alu 5083 F45
Diameter: Twin Barrel
Grip: ergonomic bi-density
Sales Code: CD0.802



FUSION PRO _

Color: silver/black
Length: 110-135 cm
Tube: Alu 7075 F56
Diameter: 14mm
Grip: ergonomic bi-density
Sales Code: CD0.803



MAGFIRE _

Color: fire
Length: 110-135 cm
Tube: Alu 5083 F45
Diameter: 18mm
Grip: ergonomic bi-density
Sales Code: CD1.805



MAGIC CARBON _

Color: gold
Length: 110-135 cm
Tube: Carbon
Diameter: 13mm
Grip: ergonomic foam
Sales Code: CD4.812



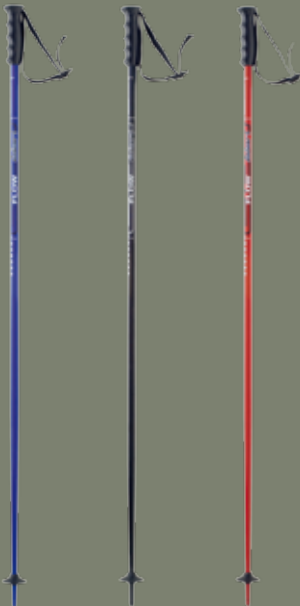
SPICE _

Color: silver
Length: 110-135 cm
Tube: Alu 5083 F45
Diameter: 16mm
Grip: ergonomic lady
Sales Code: CD4.814



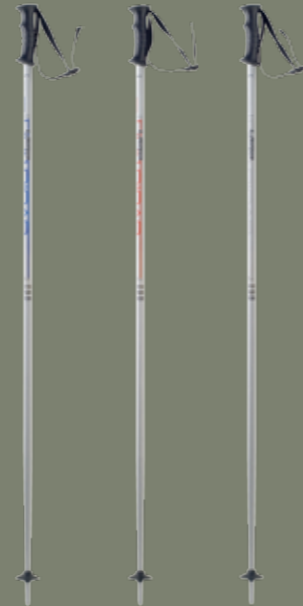
MAGIC _

Color: black
Length: 110-135 cm
Tube: Alu 5083 F45
Diameter: 16mm
Grip: ergonomic bi-density
Sales Code: CD4.813



FLOW _

Color: blue / black / red
Length: 110-135 cm
Tube: Alu 5083 F45
Diameter: 18mm
Grip: ergonomic
Sales Code: CD2.806 (blue)
CD2.808 (black)
CD2.807 (red)



EVOLUTION _

Color: silver/blue // silver/red // silver/black
Length: 110-135 cm
Tube: Alu 5083 F45
Diameter: 18mm
Grip: ergonomic
Sales Code: CD3.810 (silver/blue)
CD3.809 (silver/red)
CD3.811 (silver/black)



RACE GS _ / SL _

Color: green/black
Length: 110-135 cm
Tube: Alu 7075 F56 Speed bow
Alu 7075 F56
Diameter: 18mm
Grip: elan race
Sales Code: CD6.817 (GS) bended
CD6.818 (SL)



JR. RACE GS _ / SL _

Color: green/black
Length: 80-105 cm
Tube: Alu 5083 F45 Speed bow
Alu 5083 F45
Diameter: 16mm
Grip: race Jr.
Sales Code: CD7.819 (GS) bended
CD7.820 (SL)



FORMULA _

Color: blue / anthracite / red
Length: 70-110 cm
Tube: Alu 5083 F45
Diameter: 14mm
Grip: ergonomic Jr.
Sales Code: CD5.816 (blue)
CD5.817 (anthracite)
CD5.815 (red)

ACCESSORIES SERIES _ HELMETS _



SPEED _

Color: black
 Sizes: M (55-56 cm) L (57-58 cm) XL (59-60 cm)
 Features: full shell, ventilation system, perfect fit adjustment
 Sales Code: CE0.101



TEAM GREEN _

Color: matt black
 Sizes: M (55-56 cm) L (57-58 cm) XL (59-60 cm)
 Features: superlight in-mould, ventilation system, perfect fit adjustment
 Sales Code: CE1.102



W-STUDIO _

Color: pearl white
 Sizes: M (54-55 cm) L (56-57 cm)
 Features: superlight in-mould, ventilation system, perfect fit adjustment
 Sales Code: CE2.103



RACE JR. _

Color: green
 Sizes: S (53-54 cm) M (55-56 cm) L (57-58 cm)
 Features: full shell, race chin protector, ventilation system, perfect fit adjustment
 Sales Code: CE3.104



FORMULA _

Color: blue/black
 Sizes: XS (50-52 cm) S (53-54 cm) M (55-56 cm)
 Features: full shell, ventilation system, perfect fit adjustment
 Sales Code: CE4.105



FORMULA _

Color: red/black
 Sizes: XS (50-52 cm) S (53-54 cm) M (55-56 cm)
 Features: full shell, ventilation system, perfect fit adjustment
 Sales Code: CE4.106

ACCESSORIES SERIES _ BAGS _



SMALL BACKPACK _

Two medium size separate compartments, integrated pockets, bottle holder and additional pocket on side, top compartment with two pockets and additional padded phone pocket, dual padded back support with breathing textile, padded handle bar

Sales Code: CG3.942



TRAVEL BAG ON WHEELS _

Two removable gear liners, two big separate compartments, side pocket, extendable handle bar, removable arm holder strap, protected edges, wheels

Sales Code: CG0.940



TROLLEY BAG _

Gear bag with additional pockets, removable front part (backpack), size extendable main compartment, personal plane luggage size, extendable handle bar, wheels

Sales Code: CG8.951



BOOT BAG _

Main compartment, small pocket bottom protection

Sales Code: CG9.944



SPORT BAG _

Main pocket, outside pocket, smaller pockets inside, 2 side pockets

Sales Code: CG4.943



BIG BACKPACK E/RACE _

Big main pocket, separate front pocket, additional adjustable straps, two bottle pockets at the side

Sales Code: CG2.941

SKI BAG 1 PAIR / 2 PAIRS _

Main compartment, protection stripes, side padding

Sales Code: CG5.946 (1 pair)
 CG6.945 (2 pairs)

SKI DEMO BAG _

Integrated gear liner, extendable handle bar, wheels, business card holder, protected edges

Sales Code: CG1.950



TECHNOLOGY _ SYSTEMS _

FUSION PRO

The Fusion Pro System delivers a whole new level of skiing performance, with ultra-responsive and dynamic edge-to-edge execution. More aggressive edge control in the tails of the skis translates into precision skiing and even faster acceleration out of each turn.



FUSION

Fusion is the world's first fully integrated ski binding system. The innovative intraglide system allows the binding system to become part of the ski for enhanced power transmission.



TMD

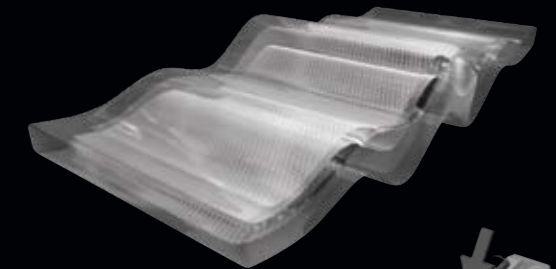
Elan's world-famous patented quick-mounting binding system. Designed, developed and perfected with the demands of recreational skiers in mind, TMD paves the way for smooth, harmonious turns on the mountain, as well as enhanced energy transmission and edge control.



TECHNOLOGY _ TORSION _

WAVEFLEX™

Elan's latest award-winning ski construction technology is a veritable revolution in skiing performance. Specifically developed to deliver powerful edge hold for versatile high performance skiing.



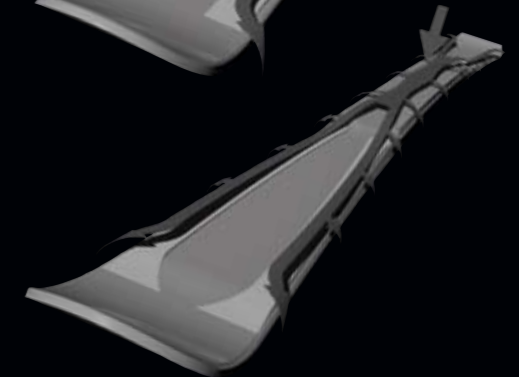
DOUBLE EXPRESS

Crossed pressure bars in the fore and rear of the integrated plate produce enhanced torsional stability. Exclusive to racing models, Double Express technology gives you the edge in competition.



EXPRESS

Designed to optimize the transfer of energy from the skier to the ski, the patented Express technology also enables improved edge hold and harmonious carving turns.



TECHNOLOGY _ CORES _

RESPONSE FRAME WOODCORE

Used in SLX, GSX and Magfire skis, the unique and innovative Response Frame woodcore benefits from direct power transmission and optimal torsional stability thanks to the combination of a hardwood frame around a softer wood centre. Lightweight yet extremely durable, this woodcore sets the standard.

LAMINATED WOODCORE

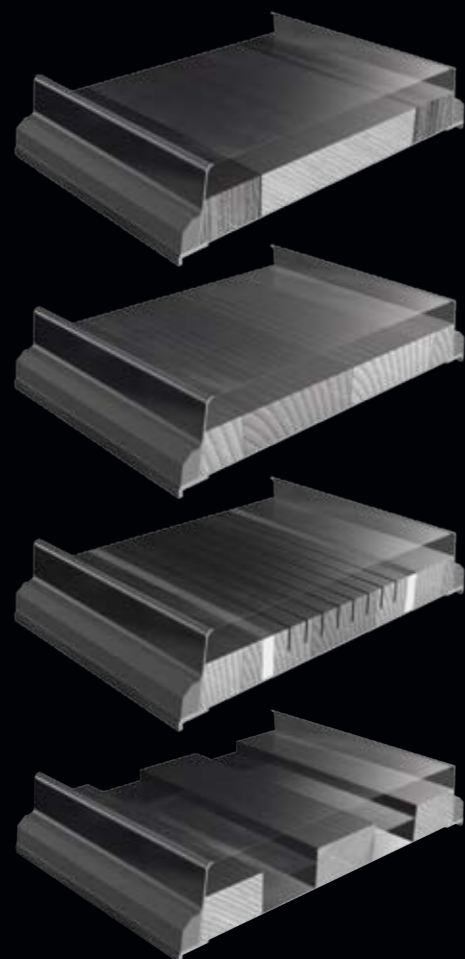
Specifically shaped for each model and size, Elan's extremely durable and responsive tip-to-tail laminated woodcore delivers supreme edge-to-edge power transmission.

POWER WOODCORE

A unique tip-to-tail woodcore paving the way for enhanced torsional stiffness and reduced weight – all thanks to the woodcore's innovative power channels.

CORELOCK WOODCORE

Locked inside the ski, the Corelock woodcore is shaped like a triple chassis that connects with load-bearing materials. The result is super-stable torsional stiffness and optimum edge control.



SIDELOCK WOODCORE

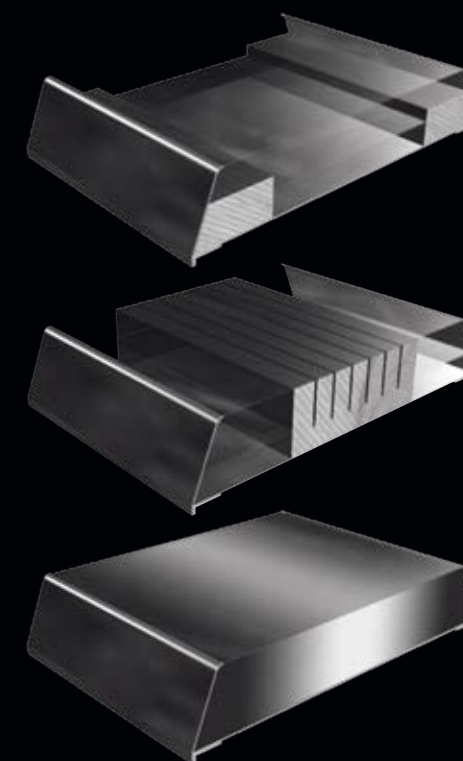
The Sidelock woodcore features a technical double woodcore chassis empowering the ski with a softer flex pattern and premium edge-to-edge power transmission.

COMPREX WOODCORE

Fitted air channels within a compressed woodcore make the Complex woodcore one of the most effective woodcores on the market, with enhanced edge-to-edge responsiveness and more effortless carving.

SYNFLEX CORE

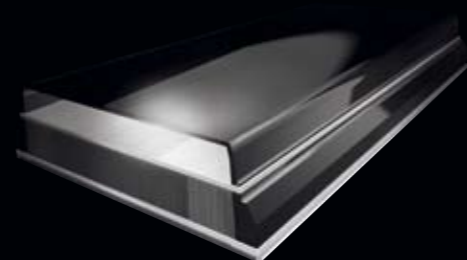
A lightweight synthetic core featuring optimal flex distribution. Elan's Synflex Core boasts varying densities the length of the ski for supreme performance levels.



TECHNOLOGY _ REINFORCEMENT _

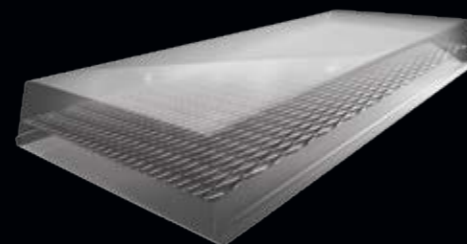
DUAL TITANIUM

The woodcore is sandwiched with two layers of titanium, making the ski ultra-responsive and enabling a progressive flex pattern.



MONO TITANIUM

The ski's responsiveness is enhanced with a single layer of titanium positioned on top of the woodcore. The durability of the flex pattern is protected through the introduction of Mono Titanium to the sides of the ski.



LITHIUM TECHNOLOGY

As the lightest and most temperature-resistant metal known to man, Lithium is used to great effect as a ski reinforcement without adding any unwanted weight.

TECHNOLOGY _ CONSTRUCTION _

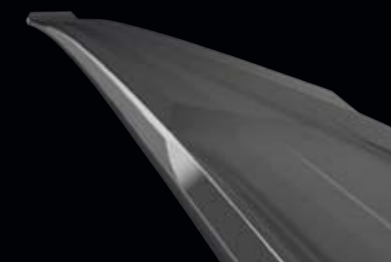
RACING SIDEWALL (RST)

Designed specifically for competitive skiing, the vertical sidewalls deliver optimum edge hold from tip-to-tail, as well as a direct transfer of power to the edges at high speed.



ADVANCED SIDEWALL (AST)

A combination of three different sidewall constructions - vertical (90°), angled (60°), and Monoblock construction make this a top performance ski series.



PARTIAL SIDEWALL (PST)

A sidewall construction under the plate area specially tailored for recreational skiers. Perfect for skiers looking for easy maneuverable skis.



MONOBLOCK TECHNOLOGY

Upper load bearing laminates come together with lower load bearing laminates in the assembly process for superior power transmission and enhanced torsional stability.

COLLECTION 0708 _ OVERVIEW _

| MODEL | SALES CODE | PLUS TECH | TECHNOLOGY / CONSTRUCTION | SYSTEM | BINDING | GEOMETRY | LENGTH (CM) / RADIUS (M) | MODEL |
|---------------------------------------|------------|----------------|---|---------------|---------------------------------|--|--|---------------------------------|
| RACING - GS, SL | | | | | | | | |
| SLX WORLD CUP plate | AA0.431 | WCR | RST Sidewall, Laminated Woodcore, DualTi, race tuning | VIST plate | ER 17.0 FF+ black/green | FIS approved | 155(11.6), 165(12.8) | SLX WORLD CUP plate |
| SLX RACE green Fusion Pro | AA2.350 | WCR | Double Express, RST Sidewall, Response Frame Woodcore, DualTi | Fusion Pro | ELD 12.0 FP black/green | 112/66/102, 114/66/104*, 116/66/106** | 155(11.5), 160*(11.7), 165**(12.0), 170**(12.8) | SLX RACE green Fusion Pro |
| SL RACE black Fusion Pro | AA5.424 | WCR | Double Express, RST Sidewall, Laminated Woodcore, MonoTi | Fusion Pro | ELD 11.0 FP black/green | 112/66/102, 114/66/104*, 116/66/106** | 155(11.5), 160*(11.7), 165**(12.0), 170**(12.8) | SL RACE black Fusion Pro |
| GSX WORLD CUP plate | AA0.433 | WCR | RST Sidewall, Laminated Woodcore, DualTi, race tuning | VIST plate | ER 17.0 FF+ black/green | FIS approved | 176(R>23), 182(R=23), 188(R>27), 191(R>27) | GSX WORLD CUP plate |
| GSX RACE green Fusion Pro | AA1.419 | WCR | Double Express, RST Sidewall, Response Frame Woodcore, DualTi | Fusion Pro | ELD 12.0 FP black/green | 109/66/98, 107/66/95 | 164(14.6), 170(15.4), 178(18.3) | GSX RACE green Fusion Pro |
| GS RACE black Fusion Pro | AA3.421 | WCR | Double Express, RST Sidewall, Laminated Woodcore, MonoTi | Fusion Pro | ELD 11.0 FP black/green | 109/66/98, 107/66/95* | 164(14.6), 170(15.4), 178(18.3) | GS RACE black Fusion Pro |
| SPEEDWAVE | | | | | | | | |
| Speedwave 14 black/green Fusion | AB0.354 | WaveFlex™ | WaveFlex™, RST Sidewall, Laminated Woodcore, DualTi, Isometric Topsheet | Fusion | ELD 12.0 F black/green | 116/70/105 | 152(10-16), 160(10-16), 168(10-16), 176(10-16) | Speedwave 14 black/green Fusion |
| Speedwave 12 black/red Fusion | AB1.456 | WaveFlex™ | WaveFlex™, RST Sidewall, Laminated Woodcore, MonoTi, Isometric Topsheet | Fusion | ELD 11.0 F black/red | 116/70/105 | 152(10-16), 160(10-16), 168(10-16), 176(10-16) | Speedwave 12 black/red Fusion |
| Speedwave 10 black/red Fusion | AB2.356 | WaveFlex™ | WaveFlex™, Shell Construction, Corelock Woodcore, Lithium Technology | Fusion | EL 11.0 F black/red | 115/70/103 | 152(10-16), 160(10-16), 168(10-16), 176(10-16) | Speedwave 10 black/red Fusion |
| Speedwave 8 black/green Fusion | AB3.457 | WaveFlex™ | WaveFlex™, Shell Construction, Corelock Woodcore | Fusion | EL 10.0 F black/green | 115/70/103 | 152(10-16), 160(10-16), 168(10-16), 176(10-16) | Speedwave 8 black/green Fusion |
| Speedwave 8 black/silver Fusion | AB3.458 | WaveFlex™ | WaveFlex™, Shell Construction, Corelock Woodcore | Fusion | EL 10.0 F black/silver | 115/70/103 | 152(10-16), 160(10-16), 168(10-16), 176(10-16) | Speedwave 8 black/silver Fusion |
| MAGFIRE - MULTI CONDITION GEAR | | | | | | | | |
| Magfire 14 Fusion | AD0.451 | WaveFlex™ | WaveFlex™, RST Sidewall, DualTi, Laminated Woodcore, Isometric Topsheet | Fusion | ELD 12.0 F black/orange WB | 126/82/109 | 152(11.9), 160(13.4), 168(15.4), 176(17.2), 184(19.0) | Magfire 14 Fusion |
| Magfire 12 orange Fusion | AD1.355 | WaveFlex™ | WaveFlex™, RST Sidewall, MonoTi, Laminated Woodcore, | Fusion | ELD 12.0 F black/orange WB | 126/82/109 | 152(11.9), 160(13.4), 168(15.4), 176(17.2), 184(19.0) | Magfire 12 orange Fusion |
| Magfire 10 red Fusion | AD2.449 | Fusion | Express, AST Sidewall, MonoTi, Corelock Woodcore | Fusion | ELD 11.0 F black/red | 125/75/109 | 152(10.8), 160(11.9), 168(13.3), 176(14.9) | Magfire 10 red Fusion |
| Magfire 8 blue Fusion | AD4.459 | Fusion | Express, Corelock Woodcore, Lithium Technology | Fusion | EL 10.0 F black/silver | 123/73/104 | 152(11.2), 160(12.6), 168(14.1), 176(15.7) | Magfire 8 blue Fusion |
| Magfire 8 yellow Fusion | AD4.460 | Fusion | Express, Corelock Woodcore, Lithium Technology | Fusion | EL 10.0 F black/orange | 123/73/104 | 152(11.2), 160(12.6), 168(14.1), 176(15.7) | Magfire 8 yellow Fusion |
| M PRO - FREERIDE | | | | | | | | |
| Quad One | AD0.920 | SWC | RST Sidewall, Laminated Woodcore, carbon, fish tail | | ELD 14.0 black (extra WB added) | 161/121/141 | 184(20.3) | Quad One |
| 999 wood | AD0.395 | SWC | RST Sidewall, Laminated Woodcore, carbon, wood top, lifted tail | | ELD 14.0 WB black | 129/99/119 | 163(22.8), 174(27.1), 185(31.3), 193(34.7) | 999 wood |
| 888 alu | AD0.396 | Dual Titanium | RST Sidewall, DualTi, Laminated Woodcore, alu top, lifted tail | | ELD 14.0 WB black | 128/88/108 | 159(16.8), 168(19.4), 177(21.1), 186(23.1) | 888 alu |
| M PRO - FREESTYLE | | | | | | | | |
| The Zenmaster | AE0.390 | SWC | RST Sidewall, Laminated Woodcore, Fibreglass, twin tip | | ELD 14.0 WB black | 120/90/110, 122/91/112, 124/92/114 | 165(19.8), 175(20.1), 185(22.9) | The Zenmaster |
| The Revert | AE0.389 | RailEdge | RST Sidewall, Laminated Woodcore, Fibreglass, Rail Edge Technology, twin tip | | ELD 14.0 black | 114/75/103, 116/76/105, 118/78/106, 120/80/108 | 155(11.9), 165(13.5), 175(16.0), 185(17.0) | The Revert |
| The Code | AE1.382 | SWC | RST Sidewall, Laminated Woodcore, Fibreglass, twin tip | | ER 11 black/red | 105/73/96, 107/74/99*, 108/76/98, 110/78/100, 112/80/102 | 135(10.2), 145(11.7), 160(18.4), 170(21.2), 180(24.2) | The Code |
| The Zen | AE3.381 | | Full Power Cap, Complex Woodcore, twin tip | | EL 7.0 silver/black | 102/72/92 | 115(9.0), 125(11.0), 135(13.1), 145(15.5) | The Zen |
| FLOW - ALL MOUNTAIN | | | | | | | | |
| Flow 8.1 green/white PST Fusion | AB4.378 | Fusion | Express, PST Sidewall Technology, Corelock Woodcore | Fusion | EL 10.0 F black/green | 117/71/103 | 152(11.6), 160(13.1), 168(14.6), 176(16.2) | Flow 8.1 green/white PST Fusion |
| Flow 6.1 anthracite/orange TMD | AB5.361 | TMD | Express, Full Power Cap, Corelock Woodcore | TMD | EL 10.0 TMD black/orange | 115/71/100 | 144(11.1), 152(12.5), 160(14.1), 168(15.8), 176(17.5) | Flow 6.1 anthracite/orange TMD |
| Flow 4.1 blue/white TMD | AB6.511 | TMD | Express, Full Power Cap, Complex Woodcore | TMD | EL 10.0 TMD black/silver | 114/70/100 | 144(10.7), 152(12.2), 160(13.7), 168(15.3) | Flow 4.1 blue/white TMD |
| Flow 4.1 red/white TMD | AB6.513 | TMD | Express, Full Power Cap, Complex Woodcore | TMD | EL 10.0 TMD black/red | 114/70/100 | 144(10.7), 152(12.2), 160(13.7), 168(15.3) | Flow 4.1 red/white TMD |
| Flow 8.2 lime PST Fusion | AB4.520 | Fusion | Express, PST Sidewall Technology, Corelock Woodcore | Fusion | EL 10.0 F black/green | 117/71/103 | 152(11.6), 160(13.1), 168(14.6), 176(16.2) | Flow 8.2 lime PST Fusion |
| Flow 6.2 carbon TMD | AB5.522 | TMD | Express, Full Power Cap, Corelock Woodcore | TMD | EL 10.0 TMD black/orange | 115/71/100 | 144(11.1), 152(12.5), 160(14.1), 168(15.8), 176(17.5) | Flow 6.2 carbon TMD |
| Flow 4.2 electra TMD | AB6.523 | TMD | Express, Full Power Cap, Complex Woodcore | TMD | EL 10.0 TMD black/silver | 114/70/100 | 144(10.7), 152(12.2), 160(13.7), 168(15.3) | Flow 4.2 electra TMD |
| Flow 4.2 lava TMD | AB6.525 | TMD | Express, Full Power Cap, Complex Woodcore | TMD | EL 10.0 TMD black/red | 114/70/100 | 144(10.7), 152(12.2), 160(13.7), 168(15.3) | Flow 4.2 lava TMD |
| W STUDIO - LADY COLLECTION | | | | | | | | |
| Free Spice Ltd. | AD0.364 | SWC | RST Sidewall, Truelite Woodcore, Fibreglass, lifted tail | | ERW 11 gold WB | 128/88/108 | 159(16.8), 168(19.4), 177*(21.1) | Free Spice Ltd. |
| MO' Spice Ltd. | AE1.362 | SWC | RST Sidewall, Truelite Woodcore, Fibreglass, twin tip | | ERW 11 gold WB | 107/74/99, 114/75/103, 116/76/105 | 145(11.7), 155(11.9), 165(13.5) | MO' Spice Ltd. |
| Wave Spice Fusion | AC5.371 | WaveFlex™ | WaveFlex™, RST Sidewall, MonoTi, Truelite Woodcore | Fusion | ELD 11.0 F black/orange WB | 126/80/109 | 152(11.9), 158(13.4), 166(15.4) | Wave Spice Fusion |
| Mag Spice Fusion | AC8.370 | Fusion | Express, AST Sidewall, Dualite Woodcore | Fusion | ELW 9.0 F black/gold | 125/75/109 | 152(10.6), 158(11.9), 166(13.3) | Mag Spice Fusion |
| My Spice Fusion | AC1.367 | Reflex Sidecut | Express, Shell Construction, Dualite Woodcore, Reflex Sidecut | Fusion | ELW 9.0 F white/blue | 113/70/113 | 146(9.3), 152(10.5), 158(11.8), 166(13.1) | My Spice Fusion |
| Wild Spice TMD | AC4.469 | TMD | Express, Full Power Cap, Monolite Woodcore | TMD | ELW 9.0 TMD silver/smoke | 114/70/100 | 146(10.7), 152(12.2), 158(13.7) | Wild Spice TMD |
| Speed Magic Fusion | AC6.375 | WaveFlex™ | WaveFlex™, RST Sidewall, Truelite Woodcore | Fusion | ELD 11.0 F black/orange | 116/70/105 | 152(10-16), 158(10-16), 166(10-16) | Speed Magic Fusion |
| Wave Magic Fusion | AC7.376 | WaveFlex™ | WaveFlex™, Shell Construction, Dualite Woodcore, Lithium Technology | Fusion | ELW 9.0 F white/blue | 115/70/103 | 152(10-16), 158(10-16), 166(10-16) | Wave Magic Fusion |
| Black Magic Fusion | AC0.374 | Reflex Sidecut | Express, Shell Construction, Dualite Woodcore, Lithium T, Reflex Sidecut, <i>Swarovski Elements</i> | Fusion | ELW 9.0 F black/gold | 113/70/113 | 146(9.3), 152(10.5), 158(11.8), 168(13.1) | Black Magic Fusion |
| Silver Magic TMD | AC3.373 | TMD | Express, Full Power Cap, Monolite Woodcore, <i>*CRYSTALLIZED™ - Swarovski Elements</i> | TMD | ELW 9.0 TMD silver/black | 115/71/100 | 146(11.1), 152(12.5), 158(14.1) | Silver Magic TMD |
| JUNIOR | | | | | | | | |
| RCX race plate | AA8.444 | WCR | RST Sidewall, Laminated Woodcore, Fibreglass | plate EP 11.0 | ER 11.0 FF+ black/green | 104/65/91 | 125(8.9), 130(9.8) | RCX race plate |
| RCS race plate | AA7.446 | WCR | RST Sidewall, Laminated Woodcore, Fibreglass, DualTi (150cm) | plate EP 11.0 | ER 11.0 FF+ black/green | 110/65/97 | 135(10.0), 140(10.1), 145(10.9), 150(11.6) | RCS race plate |
| RCG race plate | AA7.427 | WCR | RST Sidewall, Laminated Woodcore, Fibreglass, DualTi (176cm) | plate EP 11.0 | ER 11.0 FF+ black/red | 101/65/89 | 144(14.2), 152(15.2), 160(17.1), 168(19.1), 176(21.4) | RCG race plate |
| RC race green TMD | AF3.401 | TMD | Express, Full Power Cap, Complex Woodcore, Foiltext | TMD jr | EL 7.0 TMD silver/black | 111/68/96 | 110(6.0), 120(7.4), 130(8.9), 140(12.0), 150(13.0) | RC race green TMD |
| FORMULA red TMD | AF5/6.437 | TMD | 3D, Full Power Cap, Synflex Core | TMD jr | EL 7.0/ EL 4.5 TMD silver/black | 105/67/93, 109/67/95* | 100(5.5), 110(7.0), 120(8.6), 130(9.4)*, 140(11.2)*, 150(13.1)* | FORMULA red TMD |
| FORMULA green TMD | AF5/6.438 | TMD | 3D, Full Power Cap, Synflex Core | TMD jr | EL 7.0/ EL 4.5 TMD silver/black | 105/67/93, 109/67/95* | 100(5.5), 110(7.0), 120(8.6), 130(9.4)*, 140(11.2)*, 150(13.1)* | FORMULA green TMD |
| FORMULA blue TMD | AF5/6.387 | TMD | 3D, Full Power Cap, Synflex Core | TMD jr | EL 7.0/ EL 4.5 TMD silver/black | 105/67/93, 109/67/95* | 100(5.5), 110(7.0), 120(8.6), 130(9.4)*, 140(11.2)*, 150(13.1)* | FORMULA blue TMD |
| Spicy TMD | AF5/6.559 | TMD | 3D, Full Power Cap, Synflex Core | TMD jr | EL 7.0/ EL 4.5 TMD silver/black | 105/67/93, 109/67/95* | 100(5.5), 110(7.0), 120(8.6), 130(9.4)*, 140(11.2)*, 150(13.1)* | Spicy TMD |
| Spidy | AF7.399 | | Full Power Cap, Synflex Core | | EL 4.5 silver/black | 95/66/86 | 70(2.8), 80(4.0), 90(5.3) | Spidy |
| Quinny | AF7.394 | | Full Power Cap, Synflex Core | | EL 4.5 silv/black | 95/66/86 | 70(2.8), 80(4.0), 90(5.3) | Quinny |
| Champ | AF7.638 | | Full Power Cap, Synflex Core | | EL 4.5 silver/black | 95/66/86 | 70(2.8), 80(4.0), 90(5.3) | Champ |
| HOT WHEELS/ BARBIE | | | | | | | | |
| Hot Wheels | AF5/6.583 | | Full Power Cap, Synflex Core | | EL 7.5 / EL 4.5 | 97/66/88, 100/66/91* | 100(6.4), 110(8.1), 120(9.9), 130(10.7)*, 140(12.7)*, 150(15.0)* | Hot Wheels |
| Barbie | AF6/7.582 | | Full Power Cap, Synflex Core | | EL 4.5 | 95/66/86, 97/66/88* | 70(2.8), 80(4.0), 90(5.3), 100(6.4)*, 110(8.1)*, 120(9.9)* | Barbie |
| SPECIAL | | | | | | | | |
| Freeline Track | AG4.532 | | Full Power Cap, Synflex Core, twin tip | Rental Track | ESP 10.0 TRACK | 115/76/105 | 125(8.5), 135(10.3) | Freeline Track |
| EXPO orange track | AE3.398 | | Full Power Cap, Synflex Core, twin tip | Rental Track | ESP 10.0 TRACK | 111/87/100 | 99(7.7) | EXPO orange track |
| Vario orange | AE4.397 | | Full Power Cap, Synflex Core, twin tip | | non-release binding | 111/87/100 | 99(7.7) | Vario orange |
| Vario blue | AE4.533 | | Full Power Cap, Synflex Core, twin tip | | non-release binding | 111/87/100 | 99(7.7) | Vario blue |