

DYNAFIT



2007 | 2008

FreeTouring - SkiTouring - SkiRunning





SkiTouring	06-13
FreeTouring	14-19
SkiRunning	20-23
Dynafit Women	24-27
Ski Collection	28-33
SkiTouring Ski Collection	34-35
FreeTouring Ski Collection	36-37
Ski Running Ski Collection	38-39
Binding Collection	40-47
Ski Boot Collection	48-63
Apparel	64-69
Underwear	70-71
First Layer	72-73
Hybrid Layer	74
Softshell	75-76
Insulation Layer	77-78
Hardshell	79-80
Women Apparel	81-85
Caps	86-87
Poles	88-89
Gloves	90-91
Speed Skins	92-93
Helmets	94-95
Backpacks	96-99
Accessories	100-101
Product Overviews	102



SPEED UP

Dynafit's snow leopards symbolise its lightweight, agility, and elegance on the mountain.

Whether speed-climbing and then skiing down the sheer face of Gasherbrum II, participating in an expedition on Mt. Everest or Cho Oyo, or crossing the Alps in speed-style, Dynafit athletes have once again pushed themselves to their limits. It is in these extreme situations, when lives are at stake, that Dynafit products prove to be the perfect combination of lightness, performance, and reliability.

Our development team has drawn on an ideal blend of experience, passion, and perfect harmony with the athletes to make decisive progress for the 2007/8 Product Line.

The revolutionary new design of the ZZERO line of ski-boots sets a new weight-to-performance benchmark for ski touring boots.

The highly functional Dynafit apparel line has been expanded to include the Four Elements parka, which relies on a combination of various technologies to meet the needs of ski-tourers in full.

Two newly developed ski models have also been introduced, Gasherbrum II and Seven Summits, the result of a perfect combination of lightweight construction, load capacity, and skiing performance.

Dynafit's engineers succeeded once again in further reducing the weight of their racing ski-bindings. LOW TECH RACE is going to set a new benchmark for those seeking to optimise their weight this next season.

Dynafit and the products sold under the snow leopard brand are partners that the most demanding mountaineers can count on.

We do things we love and things follow...

...staying devoted for all times!

2007/08



Gasherbrum II - the Shining Peak (8035m)

After a seven days' march we finally viewed base camp, located on a massive lateral moraine. There was not a blade of grass or bit of moss to be seen, just a couple of ravens and crows. It was a marvellous sight. The destination of our trek--G II--towered to the north.

Impatient after waiting out a suitable period of acclimatisation, we finally set out for the peak. The trail that leads to Camp "I" or "ABC" passes through a massive glacier that slides down from Gasherbrum into a huge basin surrounded by Gasherbrum's six peaks. As we arrived, the early morning sun brought a massive avalanche thundering down the south face of the mountain. This year the trail to Camp II (6500 metres) runs along the foot of the south-western ridge known as Banana Ridge, so we managed to steer clear of the gigantic south face and its avalanche path. We got an early start and made quick progress up the sheer cliff faces. Camp II is wedged in amongst the seracs on a little plateau on Banana Ridge. At five o'clock the next morning we reached Camp III, which stands at 6,950 metres. We made rapid progress with the set ropes and reached the next campsite, again in the early afternoon. We decided against a camp at 7,500m, choosing instead to set off for the peak directly from camp III.



While looking down you feel as seated unfastened in an airplane.

At the turn of midnight we finally began our ascent. The weather was perfect. It was not too cold and there was no wind. The night sky was full of stars.

An hour later we arrived at the rocky ridge that leads up to Camp IV. In the darkness of the night we were not able to make out the slope we wanted to follow back down, which was off to the right of the sheer face we were scaling. We kept looking for the line and trying to commit it to memory for the descent. The terrain was starting to get rough: we had to go 300 metres up a 45-50° incline, and to make matters worse the snow was frozen hard and interspersed with the occasional serac or crevasse. Below us the slope broke off, interrupted by the icy sheer south face of the mountain. The slopes beneath camp III during acclimatisation seemed easy by comparison. We had only been able to observe the terrain from a distance, and French and Swedish extreme skiers had described the slope as impossible to traverse.

Further up the mountain we passed some mountaineers who were progressing slowly on set ropes and soon after we reached Camp IV. We had never seen anything like it. In the dim starlight we made out what seemed a sort of cemetery: a dozen tents scattered like decomposing bodies over a small plateau. Inside the tents we found food supplies, some clothes, and a few old Russian oxygen tanks.

With Camp IV behind us we continued our trek, glad to have the mountain to ourselves. We picked up the pace and finally



Equipment and food on the way to the next camp.

SkiTouring

A moment of self-awareness.



Every step in this altitude is as exhausting as 100 running steps in the Alps.



Baggage evacuation per fix rope.

Gasherbrum II - the Shining Peak (8035m)

got back into our usual rhythm. When we reached the South-eastern pass of the pyramid-shaped peak a picture-perfect dawn was breaking. All we could see were seven and 8000 metre high peaks all around us. Simply amazing!

Then, a bit later, the summit. Incredible. To the left the mountain sloped down 2,000 metres to the Chinese border, and the slope to the right led towards Pakistan. Our goal was to make a smooth descent on skis. Just skis: no ropes, no climbing! All that was left to do was to get going! We put on our boots and clicked into our bindings. Ready to ski at 8,000 metres!

We broke off some small bits of snow from the steep peak in order to get a look downhill. Our legs, which just minutes before were weary from the strain, were newly energised. Still, the first turn was a real challenge. It was hard to judge the snow up there. Was it dry? After a while our fears began to subside as we breathed in the cold mountain air. We made our first few turns on our new Gasherbrum II skis. We got down the summit face with no trouble at all. Below Camp IV we made our way down around a pair of huge crevasses and seracs and reached the steep face between Camp IV and Camp III. At this point we really had to concentrate—there was no room for error. We made it through to the slope below Camp III, soaked to the bone with sweat. On the way up we had seen that from this point on down there was an area that seemed passable and would allow us to ski down without having to lower ourselves over the seracs on ropes. Seen from above, the first slope looked pretty steep. We had no other choice—it was the only possible line. We made the first turn without trouble: our skis' steel edges held. Suddenly a layer of wet snow gave way and I (Basti) found myself skiing over pure ice. My skis started to bounce and lose contact with the bottom. I slid sideways down the ice and picked up speed. Further on I came to a serac with a sheer vertical face. In an effort to regain control, with my skis facing downhill and the cliff right in front of me, I made a wide turn across the slope and managed to avoid the cliff and make it to a plateau off to one side. A real rush!

We were back in the centre of the broad, avalanche-prone south face, with the last serac before us. We flew down the sheer face and made our way down to the wide plateau below, carving out big turns across the slope. We still had to make the long journey back down to the base camp. We reached our tents around eight o'clock in the evening, utterly exhausted.

Our seven weeks in Pakistan were without a doubt the biggest challenge we had ever faced. We are satisfied that we had taken it up and come out on top.



40-45° inclination are the only way down.

SkiTouring



Summit on 8035 m.

Ски-туризм



ZZero 3 C-TF



Low Tech Race



Snowdrift
GTX Proshell



ST 100% Carbon Gasherbrum II



SkiTouring

Gasherbrum Special

Gasherbrum Ski Touring Ski: These skis have proved their mettle on the 50° inclines of Gasherbrum II's steep slopes. Their lightweight construction and wide side cut radius give them excellent edge traction and a high degree of control in turning on steep terrain.

ST Gasherbrum II ski poles made 100% of carbon fibre: A ski pole made of 100% carbon fibre for light climbing and serious descending.

The Snowdrift GTX Proshell Parka: A parka made of light triple-layer gore-tex with a robust exterior, combining maximum flexibility and lightness in order to take you wherever you want to go. Comfort without compromise.

G2 ski pants: Dynafit's intelligent apparel: pants made of Diaplex, a material that adapts itself to the environment in order to ensure the wearer maximum comfort at all times. Resistant to water and wind and breathable, these pants meet all of the requirements for a Dynafit Hardshell. Thanks to their double-elastic inserts they guarantee maximum freedom of movement in all ski conditions.

Firstlayer G2: Before and after skiing. At base camp, in the car, or in the ski lodge: looking good on and off the slopes. The Gasherbrum shirt, 90% cotton and 10% Elastan, is comfortable and cool at the same time!

Jetstream pantalone



■ Gasherbrum

SKI TOURING



Earthquake
Jacke



ZZero 3 PX-MF



TLT Vertical ST



SkiTouring ST 7.0



ST Progrip Titanal

SkiTouring

magical enjoyment

The foundation for a fantastic ski tour.

"The journey is the destination" is what we hear from many ski tourers. They experience breathtaking ascents in the glow of the morning sun while traditional skiers are still queuing at the lift. They then proceed to leave first tracks on the fresh powder snow whilst enjoying the incredible silence and fantastic views of pristine nature.

The Dynafit system increases their enjoyment significantly. Why? Because, the equipment is often 50% lighter than traditional touring equipment and because Dynafit is second-to-none in terms of reliability. This is because the entire ski boot - binding system is perfectly co-ordinated so that there are no weak links in the system.

Your customers will be amazed. Only top-functional Dynafit equipment can provide such Ski Touring pleasure.

Our products are developed to fit the needs of ski tourers and optimised in terms of color, functionality, and materials. Pure pleasure for an uncompromised alpine experience.



Pamir Tourenhose

SKI
-
T
-
B
-
P



Se7en Summits

All ski tourers certainly know the seven summits and many dream of scaling them. They are the highest mountains on each of the seven continents, from the biting cold of the Antarctic to Australia's sunny beaches and the savannas of Africa. Only 140 people, or so, have made this dream come true since 1985. Olof Sundström and Martin Letzter went one step further. They wanted to be the first people to climb the Seven Summits and then ski back down them.

"We had set our sights high. No one had ever climbed the world's highest peaks and then come back down again on skis. Our strategy was based on the Eco-Alpine Style. For us that means only the basics: no guides, big camps or service teams to cook us our dinner.

The point of our project was to be one with Nature, not fight against it; we wanted to discover the mountains, not conquer them. We planned to rely solely on our limited equipment and our ability to solve problems and overcome obstacles lying in our path.



The Seven Summits (Se7en Summits) Project began in 2003, when Olof Sundström and I (Martin Letzter) went to Alaska to ski Denali (6,193m), the tallest mountain in North America. The Americans also refer to Denali as the coldest mountain on Earth, although we had faced colder conditions during other winter climbs. From the base camp on Kahiltna Glacier at an altitude of 2,200 metres, where we arrived in a small prop airplane, it was another 4,000 metres up to the summit. The first 2,000 metres took us up over Kahiltna Glacier to Camp ABC. Our progress was all the more difficult for the fact that we had to drag sleds loaded with all the equipment we needed to

bring up to Camp ABC, which lies at an altitude of 4,300 metres. During this part of our trek we each had around 60 kg. of equipment, 20 kg. in our backpacks and 40 kg. on our sleds. Once we had reached Camp ABC we took off our skins and put on our climbing boots, then pushed on towards the summit along a ridge that led us to the heart of the Denali Massif. On July 19th, 2003 we reached the highest point of North America. We made our descent back down to below 5,000 metres, mostly on hard-packed snow. Then it got softer, even turning into powder at some points. Further down the snow began to melt a bit and was either icy or slushy, depending on the time of day.

Aconcagua (6,962m), the tallest mountain in the South American Andes, was the next mountain on our list. A few days before New Year's Eve 2003 we made our way to Santiago de Chile to climb the mountain during midsummer in South America. From there we crossed over the Andes into Argentina by car. Once we arrived, we continued our journey on mules, which brought us and our equipment up to the mountain. Then we came to the base camp at 4,200 metres, middle camp at 5,200 metres, and, finally the camp that lies at the foot of the glacier at an altitude of 6,000 metres. We climbed up the last 1,000 metres of the glacier, overcoming slopes as steep as a 55° incline in order to familiarise ourselves with the area and prepare ourselves to ski back down. It snowed heavily during the climb, which meant that some beautiful powder snow was waiting for our descent, but also increased the risk of an avalanche.



Free Touring

free

We finally reached the summit on January 14th, 2004 after a 15-hour climb through snow that came as high as our waists at some points.

In winter 2003 Olof had already climbed the highest mountain in Europe, Mt. Elbrus in the Russian Caucasus, with some friends before we left for Denali. In winter 2005 I decided to follow in his footsteps. Temperatures hovered around -55 degrees Celsius and I had already been on the mountain for two weeks and had two failed attempts behind me due to bad weather. I reached the 5,642 metre high summit of the mountain on March 26th, 2005. As I skied back down from the summit to the ridge, which rises to 5,200 metres, I often had to make my way through patches of rock-hard ice, which persisted all the way down to around 4,200 metres in altitude. After that point snow conditions gradually improved until turning into powder snow that covered the slope of the mountain all the way down to the foot at 2,300 metres, allowing me yet another beautiful descent.

In July 2005 the next stage in the project brought us to Australia's highest mountain, Mt. Kosciuszko. Just getting there was an adventure. It started off with a journey halfway around the world in an 8.5 metre boat that led us from southern Sweden to Darwin, Australia, passing through the Atlantic, the Panama Canal, and the Pacific. We continued on for more than 5,000 km by car, until we finally arrived at Kosciuszko National Park. On July 7th we reached the summit by ski and made the descent under good conditions in the middle of the Australian winter, passing over snow, stone and grass, until we came back down to the mountain valley at 1,200 metres. Then we left the continent behind and moved on to prepare ourselves for our next challenge.



The arduous way to Mt. Elbrus.



Seaman's Hut at Mt. Kosciuszko.

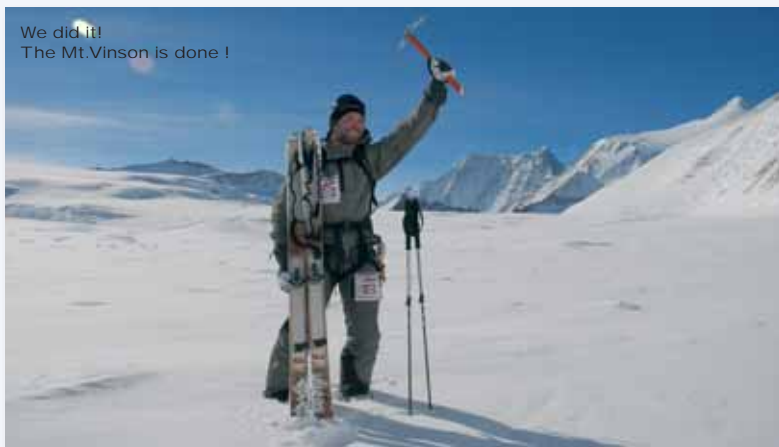
Se7en Summits

The same year, on September 2nd, 2005, we climbed Mt. Kilimanjaro, passing over the southern ice field and Kersten Glacier with its 45 degree inclines. Unfortunately, conditions were worse than bad. We had to struggle with uneven, cracked ice stretching down around 500 metres from the summit to a ridge against which the glacier had broken several years ago, causing its 500-metre tall south face to collapse.

Congratulations on Kilimanjaro.



We did it!
The Mt. Vinson is done!



Over the north ridge in Tibet to the summit of Mt. Everest.



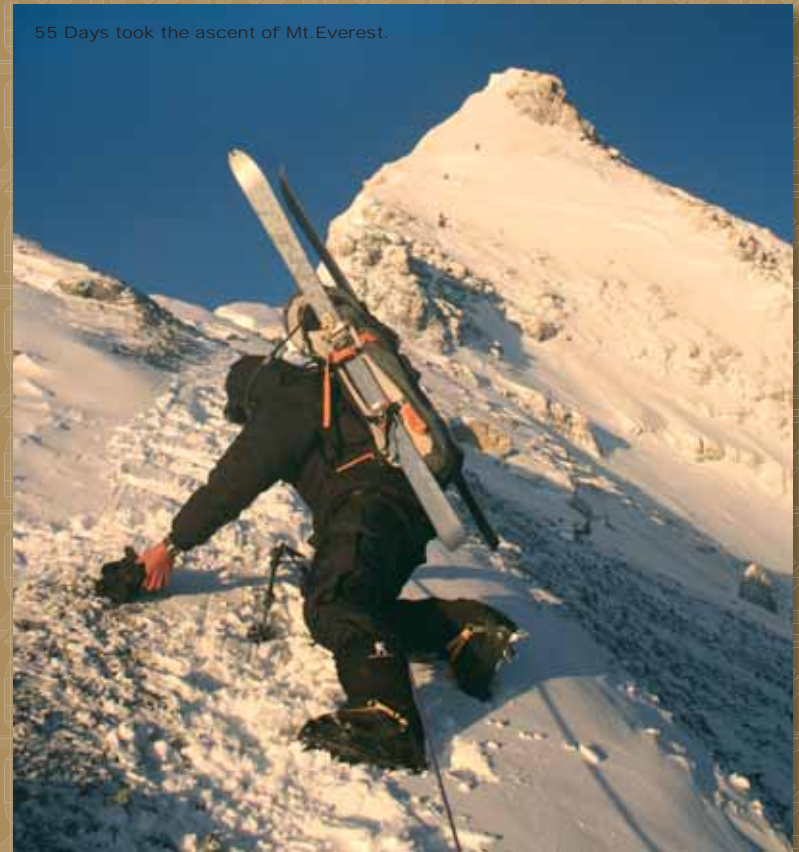
The second-to-last mountain on our list was Mt. Everest; we climbed up its north face in Tibet in spring 2006. We travelled there in a 13-year old Land Rover Defender, driving 12,000 km. through Finland, Russia, Latvia, Lithuania, Poland, Slovenia, Hungary, Romania, Bulgaria, Turkey, Iran, Pakistan, India and Nepal. The trip took 4 months, including 55 days of climbing. We finally reached the summit with our Dynafit SR 8.0 skis on May 16th. The descent was a difficult one: We had to lower ourselves by rope over hard snow and stones for 25 metres. The snow first started to improve around 7,600 metres and stayed good to Camp ABC at 6,400 metres. This descent made Olof the first man in history to come down from the summit with Telemark gear and we were the youngest Swedes ever to have climbed Everest. We were also the first Swedes ever to have skied down the mountain.

The seventh and final mountain in the "Se7en Summits" Project was Mt. Vinson, 4,897 metres high; reaching its summit on November 27th, 2006 marked the successful conclusion of the Project. We set off on our journey on November 13th with our brand-new Se7en Summits skis and ski poles accompanying us on this last expedition. Our trip led us from Sweden to Chile and from there 3,500 miles to the south by car. Despite a few deviations and technical issues we made it to Punta Arenas, the southernmost point of South America, in four days' time. From there we got a lift on a Russian military transport airplane, an Ilyushin IL-76, to Patriot Hills in Antarctica, followed

FreeTouring

free

55 Days took the ascent of Mt. Everest.

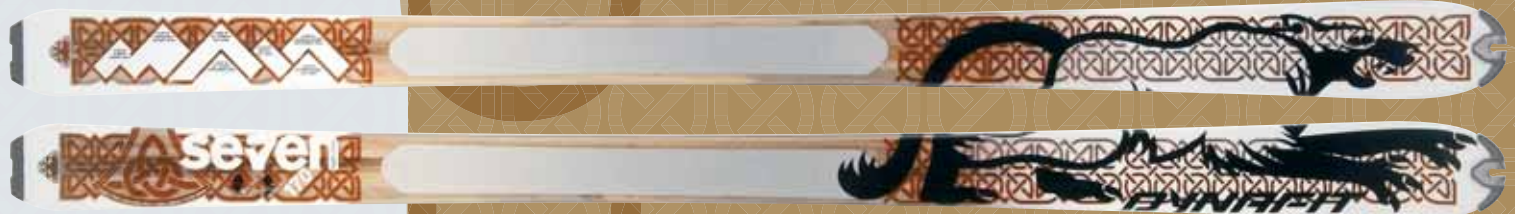


by another short hop on a Twin Otter prop plane that brought us to the foot of the Ellsworth mountain range.

After a short rest we set off on our trek towards the summit. We had not planned to stop long, a circumstance that certainly did not escape our notice. The trip from the base camp up to the summit took us only 26 hours-we actually made it! The descent was simply amazing. We made it from the summit to the high camp in two hours. After being forced to sit out a hailstorm, we continued on the base camp. Our new skis did not let us down: they were fast, light, and completely stable. This expedition was very challenging for us, especially because of the weather. Climbing Mt. Vinson is only possible during Antarctica's brief summer months, when temperatures finally rise to around -40 degrees Celsius.

We did it - mission accomplished!"
Martin Letzter

The SE7EN SUMMITS Ski symbolises the highest mountains of all seven continents. Whether on the northeast face of Mt. Everest or under the extreme weather conditions on Mt. Vinson, this ski delivers what it promises. The wide side cut curvature in the front and the tighter curvature in the back of the ski make it very forgiving in variable conditions while providing precise control on all terrain and snow types.





Paclite Jacket



Zzero 4 U-MF



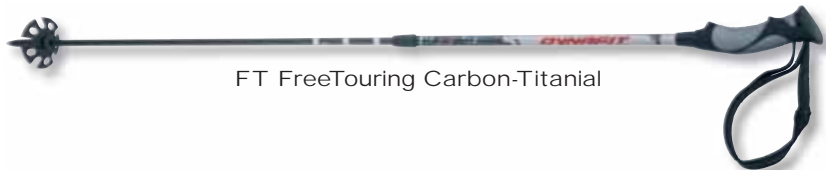
TLT Vertical FT



FT28



FreeTouring FT 10.0



FT FreeTouring Carbon-Titanial

FreeTouring

weightless sliding.

High-flying, adrenaline-charged descents.

Free tourers all have one thing in common: they are driven to push themselves to the limits. Their heart rates quicken at the names of world's most famous mountains: Großglockner, Großvenediger, Wildspitze, Weißkogel, Ortler, Piz Bernina, Eiger, Mönch, Jungfrau, Grand Paradiso, Monte Rosa, and Mont Blanc in the Alps; Huarascarán and Nev. Copa in South America; the Tetons, Capital Peak, the Wasatch, Mt. Baker, Chugach, Mt. Robson in North America; the Caucasus, Ararat, and Elbrus in Eastern Europe; and not forgetting, of course, the Himalaya mountain range with its 8000+ metre peaks.

Mountains with no cable railways and where the best powder slopes are quite a distance away from the top station. These are the mountains that Dynafit FreeTourers can now look forward to climbing with more enjoyment. Why? Because the lightest ski boot - binding combination in the world has just been improved even further with a new wide ski geometry. The soft shovel slides over snow even on untracked uphill climbs and the integrated fulcrum of the Dynafit system brings together man and material to form an energy-saving biomechanical unit. The complete Dynafit system is the FreeTourer's guarantee for better powder.

Everything is specifically designed to fit the needs of free tourers: from skis to apparel and accessories. Dynafit offers the right equipment for all situations.



FreeTouring Pant



Hannibal

Skiing through the Alps in three days

The International Dynafit Team braved more than 13,500 vertical metres and 210 kilometres of distance. In March 2006, seven young ski climbers from Germany, Austria, Italy, Spain and France crossed the Alps' main range on touring skis in only three days. Even well-trained ski tourers would plan 7-10 days for a similar trip--but not the Dynafit Team.

They chose to make the crossing from the north to the south. The Hannibal Tour set out for Kasern in Ahrntal (Südtirol) from Ruhpolding in Chiemgau. They did not make it easy for themselves, since the Tour's motto was by "by fair means". That means that the Team did not ride shuttle buses through valleys or ski lifts up the mountains: they did everything with their own strength.

"Our strong motivation helped us reach the first peak, Unternberg, at an altitude of 700 metres, in 45 minutes, despite the fact that it had frozen over a bit. It was a fitting beginning for our lightning tour. We continued on our way over avalanches of wet snow in the direction of Seegatterl ins Tal. During the journey we had to reckon with some small incidents including a fall, but we never lost sight of our goal. We rested a bit--seven minutes--in the parking lot to gather our strength before setting off once more, because it was essential for us to stick to our schedule. We were already feeling the effects of this break during the next climb, which we finished in less than an hour. The terrain leading to Scheibelberg was partly very flat, but two of the team members still ran into a few problems: there were no toilettes to be seen and not even enough time to take off our jumpers.

We kept on until we reached Steinplatte and then Loferer Alm, where we got our first warm meal of the day. Then we set off again towards the Loferer Valley Station. After our first march on foot of around five kilometres, we began our ski tour of Loferer Skihödl. The last descent of the day from Skihörndl through Rotscharte was over pristine terrain where we crossed paths with a herd of deer. Unfortunately, due to poor snow conditions, we had to march another 5 kilometres on foot, but we finally arrived at our hotel in Hochfilzen at around 5 o'clock in the afternoon.

At 5 o'clock the following morning we started off on what would be the most difficult day of our tour. We followed the length of the ridge at a quick clip until we came to Reiterkogel, then we crossed to Lengau for what seemed an eternity. It was cold and our feet began to ache. After a short pause to fortify ourselves with food and drink in Lengau, we continued onwards, covering around 1,100 vertical metres on Schusterkogel (2,207 metres). There it went from being too cold to being much too warm for our comfort. Few words were spoken: we



In record time over the Alps.

were all pushing the limits of our abilities to resist pain.

Near Thurn Pass in Jochberg we came to another road. After lunch we set off again on foot in the direction of Trattenbach. A near silence set in over the group when we arrived in Trattenbachalm. After a short descent we climbed up Zweitausender for some time. We stopped for a moment to look over towards Wildgruberkogel. It seemed so far away that our feet (and the rest of our bodies) did not want to push on. The descent through soft snow required a lot of energy, the sun was starting to set, and we still had a long journey ahead of us. We gradually lost daylight during the second-to-last climb, and during the last ascent of the day we were exhausted. Nonetheless, we struggled on to the next stop on our journey, Großvenediger. We reached our hotel around 7 o'clock.

The next morning we got up to prepare for the last leg of our trip. An hour later we were on our way. After an hour and fifteen minutes on the trail we arrived at the emergency vehicle. Some of us covered the distance to Krimml on foot, while others stayed on their skis to avoid sinking into the snow. An hour and a half later we came to Krimmler Tauernhaus. Before facing the next climb we broke for a big snack.

After another pair of ascents we got to Kasen around 1:30 PM, where journalists were already waiting for us. We were all overjoyed that the Project was actually a success. We could not believe that we had been in Ruhpolding just two days earlier!"

SkiRunning



The legs hurt, the power shrink, but it will go on.

Route

1.Day: Ruhpolding (690 m) > Gurnwandkopf (1691 m) > Großparkplatz Seegatterl > Scheibelberg (1,600 m) (Germany-Austria border crossing) > Steinplatte (1869 m) > Loferer Alm (1560 m) > Lofer (628 m)

2.Day: Hochfilzen (959 m) > Reiterkogel (1818 m) > Lengau (1146 m) > Schusterkogel (2207 m) > Paß Thurn (1274 m) > Roßgruberkogel (2156) > Wildkogel (2224 m) > Neukirchen am Großvenediger (858 m)

3.Day: Neukirchen am Großvenediger (858 m) > Krimml (1067 m) > Krimmler Tauernhaus (1622 m) > Schartenübergang Krimmler Tauern (2633 m) > Kasern im Ahrntal (1595 m)



Short orientation break.



RC 20



Avalanche Suit



TLT 4 Lite TF



TLT Vertical Race Ti



SkiRunning SR 11.0



SR Race Carbon

SkiRunning

high speed

1000 metres in 42 minutes.

Athletic SkiRunners climb 1000 metres in just 42 minutes. Top performance combined with pure adrenalin. Each metre requires an average of 6 steps, and therefore the equipment they carry is moved 6000 times per 1000 metres. A weight reduction of just one kilogram results in an incredible saving of 6 tonnes by the time the summit is reached. No wonder therefore that 90 out of 100 athletes who take part in international SkiTouring and SkiRunning competitions use Dynafit equipment.

This equipment, made by professionals for professionals, gives ambitious endurance athletes a decisive advantage, and using the light, multifunctional Dynafit system they can improve on their best times and at the same time increase their ski touring pleasure.

We're convinced there'll be no turning back. Dynafit SkiRunning equipment - once tried never forgotten.



Cho Oyo, China (8201m)

Ascent with Mustagh Ata Ski.

On October 1st, Martina Palm, accompanied by her Argentinian companion Octavio Defazio, became the first Swedish woman to have scaled an 8,000 meter high mountain on skis. The 32-year old athlete, who has been living and working in Chamonix in France for four years, was able to rely on perfect support from her Dynafit Mustagh Ata Skis and Dynafit Ski Boots and Bindings during her sensational expedition.

The two Dynafit athletes set out at the end of August. Expectations and tensions were running high. It had long been a dream of Martina's to climb an 8000 meter peak on skis. Now the dream had become reality. The expedition up the world's sixth-tallest 8000 meter peak was about to begin.

"Most women think of the expedition in terms of having to deal with freezing weather and uncomfortable conditions and pushing on until exhaustion--they certainly do not imagine that there is any fun involved. On top of all that, you have to consider that women really do have some disadvantages to overcome because of their lighter builds.

There were some times when I would ask myself what I was doing there: for example, when it was 15 degrees below zero in my tent and I had to pull on my frozen shoes and my fingers hurt so badly from the cold that tears came to my eyes; I was more tired than I had ever been in my life. Yet in retrospect it was not all so bad and my efforts have all been repaid.

The days when we had to carry our equipment to the higher camps were especially strenuous for me. Being a woman (and a small one at that) is hardly an advantage. You still need exactly the same equipment as everyone else. Carrying a 15 kg backpack is like carrying around 30% of my body weight—it is easier for a bigger person. If you also happen to be as stubborn as I am and insist on carrying everything yourself, getting to 7,000 metres is a totally exhausting endeavour. When we first reached Camp 2 at 7,100 metres, I collapsed, completely worn out by the strain of carrying my pack, and spent a minute crying. It is strange, but crying helps you feel stronger again.

The journey up to the summit was easier than I expected. We took it slowly and spent one night each in Camp 1, Camp 2 and Camp 3. From Camp 3 onwards (7,500 metres) we started to use oxygen masks. We soon felt the effects and the climb was much more pleasant. I never considered the possibility that I might not make it. The oxygen masks helped us get to the summit with some energy to spare and clear heads.



Short recovery in Camp.



After a half an hour on the summit enjoying the magnificent view we began our descent. We knew what awaited us since we already knew the route from the climb.

That day we were the only skiers on the entire mountain! During the expedition we often had occasion to be glad that we were together. On a bad day it was a big help to be able to support one another and make decisions together. It was also helpful to have a partner to rely on during the descent. You never know what might happen on a mountain like this and at such a high altitude. The descent got off to a rough start: the snow was icy, the wind was blowing, and the snow had piled up in some areas. A fall would have been the end for sure. These are the sorts of moments when you absolutely cannot let yourself get distracted. It was also difficult to breathe using the oxygen masks while skiing, so I took mine off and only put it back on again for a moment when it became necessary.

We took a short break in Camp 2 and chatted with friends. The great thing about an expedition is that you get to meet so many different people. As we set off again our friends accom-

Women



Always with a view to the summit.

panied us with a cheer. It is the kind of thing that gives you tremendous strength.

To reach Camp 1 we had to lower ourselves by rope over an icy patch where skiing was impossible.

We arrived at the camp around 6 o'clock in the evening. By then we had been moving for sixteen hours and we were totally exhausted. We were ecstatic that we had finally made it. We spent our last night in the camp and made the last leg of the journey back to Camp ABC the next morning.

I am truly glad that I chose to go on this expedition. It was a wonderful experience and I learned a lot. I had never done anything of the sort before. I do not know what my next adventure is going to be—all I know is that there will be another one."

Martina Palm



Summit rest on Cho Oyo.



Even under heaviest circumstances the pleasant anticipation remains.





Four Elements
Damen Softshell Jacke



Zzero 3 C-TF



TLT Comfort



FT 28 W



SkiTouring ST 5.0 W



ST Professional Women Carbon-Titanal

By women for women

Women

SkiTouring and FreeTouring
Ultra-light equipment that meets the needs of women.

The success of the 2005 Women SkiTouring Collection impressed many experts: awards such as the coveted VOLVO SportsDesign AWARD and euphoric test results spurred on the Dynafit Women Team. Within the Dynafit research and development team a group of female athletes, mountain guides and designers are developing products specially designed for women. These products for women flaunt a unique style, but they also turn women's physical differences into strengths. This is because the lighter average body weight of women and the different emphasis require even lighter and above all more intelligent products.

This is precisely why we came up with a women's collection that is custom-made to fit women's needs: "Women glide more lightly than men in deep powder—and they enjoy themselves more too! The new FreeTouring Women-Collection combines this weightlessness with a very special style."

Many men will be astonished to see women leaving tracks behind them on FreeTouring mountains that are significantly more attractive than their own.



Pamier Touring Pant





5.642 M
ELBRUS
MARCH 2003

6.962 M
ACONCAGUA
JANUARY 2004

8.850 M
MT. EVEREST
MAY 2006

4.897 M
MT. VINSON
NOVEMBER 2006

6.193 M
DENALI
JULY 2003

5.895 M
KILIMANJARO
SEPTEMBER 2005

7.229 M
MT. K2
JULY 2001

sever

Martin Letzter

Olof Sundström

22,5 + 18,5m | sidecut: 113/78/100mm

Uncompromising skis

for uncompromising individuals.

In the past touring skis tended to be simply a by-product of alpine ski development, something that caused a great deal of frustration to a number of Dynafit athletes. They therefore set about forming their own personal visions. These in turn served as the basis for concepts, which led to the first prototypes. All this took place more than three years ago, and in the meantime a professional ski development team has been set up. Now each day new skis are being designed, developed, built and tested, with the result that the widest possible range of skis are emerging, with one simple requirement in mind: "To create the best skis in the world for FreeTouring, SkiTouring and SkiRunning." The materials, processing technology and details all now set new standards. Here are just some of the highlights:



3 individual base ski geometries for each one of the 3 different areas: FreeTouring, SkiTouring and SkiRunning



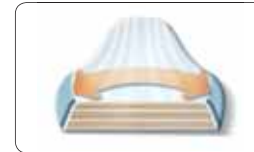
Paulownia lightwood cores for the best-possible weight and stress ratio



Universal coatings for different type of snow, in some cases with nanofinish technology



Integrated attenuation and stabilisation system for smooth fast-pace skiing during varied descents on rough terrain or at high speeds



Minimum ski torsion for safe ascents and maximum sliding behaviour in the widest possible range of descent scenarios

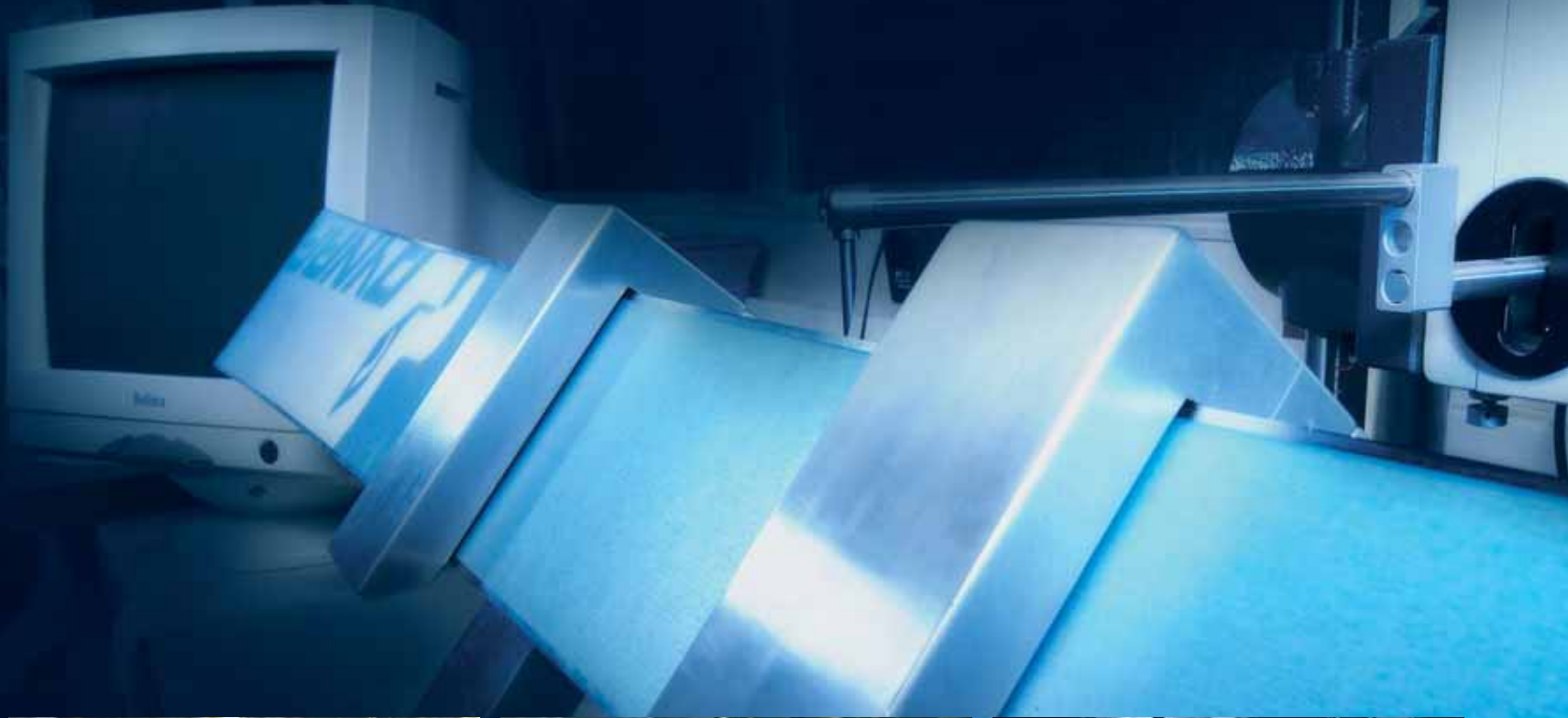


Patented SpeedSkinFix (quick skin fixing system) for increased efficiency and 100% hold



9 colour serigraphy for a unique look and precise finish







SkiCollection production

Dynafit Ski Development Centre. Small. Refined. Striking.

Dynafit is a small, refined ski brand making use of high-quality materials and state-of-the-art production techniques.

The perfection of each Dynafit ski is the result of the manual dexterity of Dynafit's craftsmen. The precisely manufactured components are carefully assembled by hand, layer by layer, and it comes as no surprise that many Dynafit craftsmen are themselves passionate SkiTourers and FreeTourers.

Dynafit special printing procedure

The Dynafit Ski acquires its unmistakable look as a result of 9 separate silk-screen procedures. The special colours are not only characterised by high brilliance, reflection strength and UV-resistance, but also by being particularly robust and ultra-light.

Brilliant laminating procedure

Each Dynafit ski contains up to 45 individual components. These together make up the individual characteristics of the each ski model, with craftsmen carefully assembling each individual component.

Precision of the high-capacity press

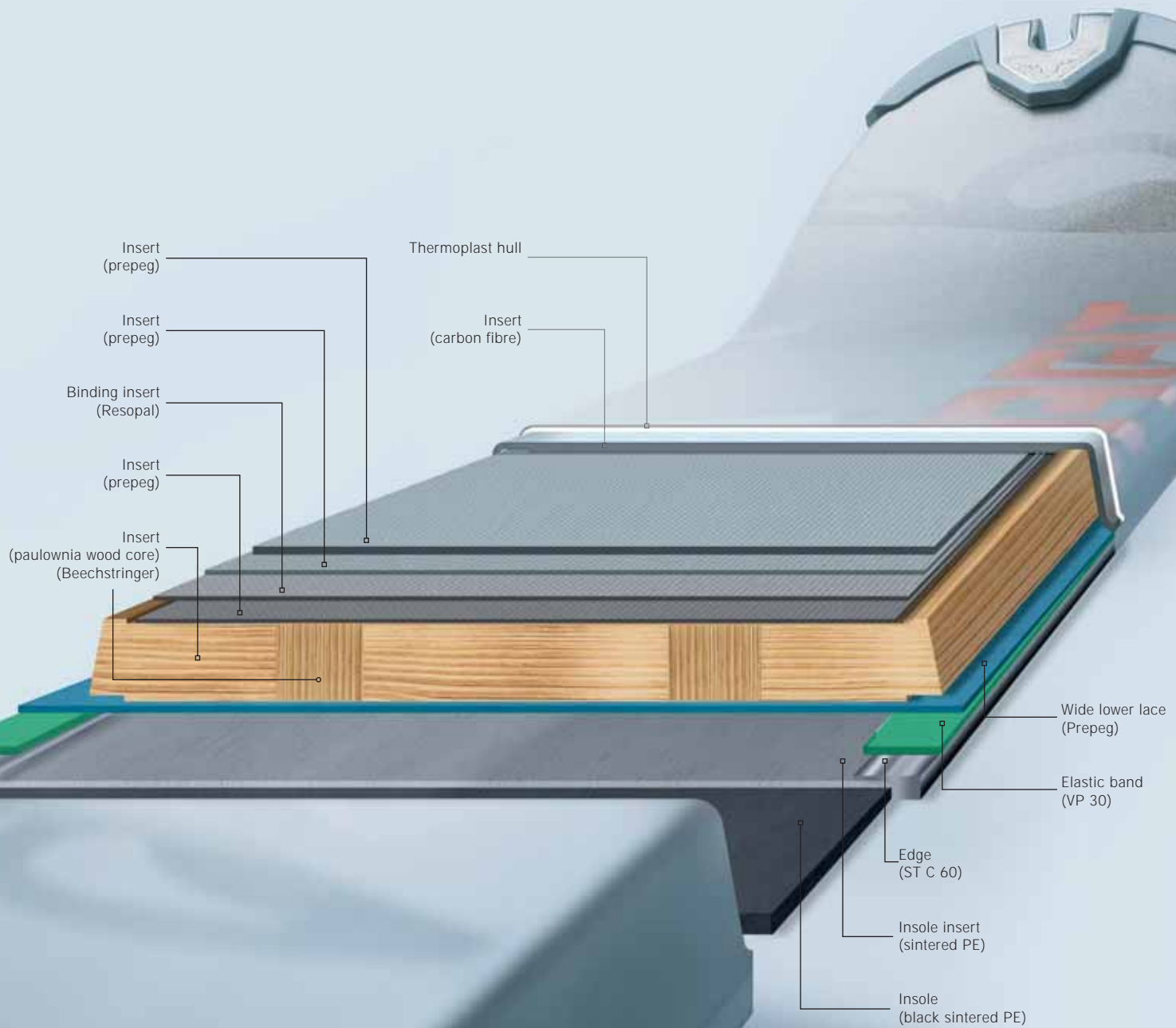
The temperature-controlled production process is able to be precisely controlled. For each different ski type a temperature and print profile is drawn up and carefully monitored during production.

Permanent quality control

Almost all ascent and descent scenarios can be simulated in Dynafit's testing rooms. The telemetrical measurements of race and FreeTour scenarios are compared with the performance characteristics of each model, so that parameters can be set and permanently monitored.

Optimisation of bending behaviour

FreeTouring, SkiTouring and SkiRunning skis are primarily different on account of their specific flexibility characteristics. As a result, pre-tensioning, bending rigidity and flexibility dynamics are all optimised using a special development program and continuously monitored during production.



SkiCollection Technology

The Paulownia elemental force. An unconventional innovation results in a breakthrough.

Dynafit engineers and ski designers are not ones to stick to well-trodden design paths. They are outward-looking and cosmopolitan. This also accounts for one of their most spectacular discoveries:

the breathtaking FreeTouring undertaken on Asia's most beautiful mountains as well as the preparations for the Mustagh Ata expedition resulted in the Dynafit team repeatedly coming into contact with Asian culture and lifestyle. On one journey they came across the legendary Paulownia cult tree, a foxglove tree and a member of the bignoniaceae family, to which locals ascribe supernatural powers. Tradition has it that following each birth a Paulownia tree is planted, and the wood of the tree then used to create a traditional Chinese wedding cabinet.

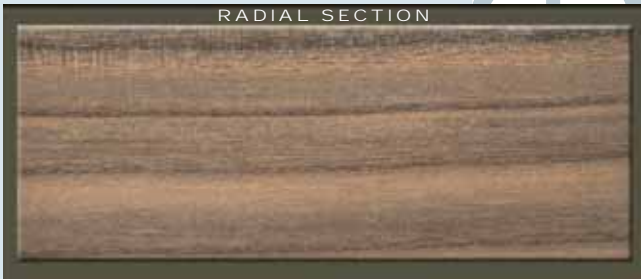
Back at the Dynafit research centre the designers examined the quality of the wood and discovered:

- an extremely high E-module (tensile strength and weight ratio)
- surprising bending behaviour with unique attenuation values
- minimal torsion, including under a high torsional load

Dynafit therefore imported initial samples and prepared test series. The results were almost too good to be true. All the testers confirmed: "The new ski construction is light and lively, and consequently combines high performance with skiing pleasure."

For the 2007/08 Season, we have improved our premium Paulownia woodcore with two 8mm wide Beech wood stringers. These lateral running stringers reinforce the power and flex of the Paulownia wood core while providing more precise edge-to-edge steering in steep and icy terrain. This addition has given the ski more pop and rebound while also increasing its dampness on hard and fast descents.

RADIAL SECTION



TANGENTIAL SECTION





SkiTouring Gasherbrum II



SkiTouring ST 7.0



SkiTouring ST 4.0 N



SkiTouring ST 3.0



SkiTouring ST 1.0

SkiTouring

Ski Collection

SkiTouring Trends

Classic ski equipment brands offer mountaineers touring models that are far too heavy. Dynafit does things differently: for us, ski touring is a pleasure. That is why the Dynafit ST series makes ski touring excursions so comfortable. At the same time, these models also live up to their excellent potential during each descent.

SKITOURING	GASHERBRUM	ST 7.0	ST 5.0 W	ST 4.0 N	ST 3.0	ST 1.0
ART. NO.	48172/9070	48084/9730	48098/ 9924	48085/ 9070	48008/ 9230	48009/ 9190
LENGTH	159 167 172	159 169 178	143 151 159 167	159 169 177	150 160 170 180	130
WEIGHT	1160g 1230g 1290g	1180g 1250g 1320g	1150g 1230g 1320g 1390g	1350g 1460g 1530g	1190g 1290g 1400g 1530g	990g
SIDE CUT	102-73-89 102-73-89 102-73-89	104-70-93,5 108,5-72-98 110,5-72-100	105-67-95 107-68-95 108-68-98 109-68-98	108-72-97 109-72-98 109-72-98	105-72-92 105-72-92 105-72-92 105-72-92	100-72-90
RADIUS	20.5 m 24.7 m 26.3 m	17.5 m 18.5 m 19.5 m	11.6 m 13.1 m 14.1 m 15.6 m	16.5 m 18.1 m 20.1 m	16.5 m 19.5 m 22.5 m 25.5 m	12.0 m
CORE CONSTRUCTION	paulownia wood/beech with spring steel inserts	100% Carbon wrapped Microcell Core	microcell core with sophisticated carbon strengtheners	poplar wood core with microcell strengtheners	poplar wood core with microcell strengtheners	Microcell Iso-Core
LAMINATE	Multiaxial-Quadrax fibreglass with carbon reinforcement	sophisticated, multidirectional laminate construction	3-D surface construction	sophisticated, multidirectional laminate construction	sophisticated, multidirectional laminate construction	sophisticated, multidirectional laminate construction
RUNNING SURFACE	sintered graphite race base with a laser-cut logo and structural polish	sintered graphite race base with a laser-cut logo and structural polish	transparent, sintered surface with a microstructure	sintered graphite race base with a laser-cut logo and structural polish	sintered graphite race base with a laser-cut logo and structural polish	sintered graphite race base with a laser-cut logo and structural polish
CHARACTERISTICS	These skis proved their mettle on the 50° inclines of Gasherbrum II's steep slopes. Their lightweight construction is made to support heavy loads and provide maximum edge traction through the use of spring steel and quadrax fibreglass, especially on steep terrain. The broad side cut radius makes them very balanced during turns and provides a highly effective edge.	Dynafit is making the ski favored by the world's elite mountain guides available in its catalogue in its original form. The ski's unbeatable lightness combined with its broad, up-curved shovel give this model the ability to stay on the surface in any situation while at the same time ensuring a mastery line even in changing snow conditions or on difficult terrain.	The women in our development team are more than pleased with the lightweight nature of this ski. The large-volume shovel means that it can easily perform at low speeds, while harmonious and powerful flexibility characteristics ensure smooth skiing and precise turn control. The use of high-quality carbon laminate results in energy-saving ascents and perfect downhill performance.	The broad shovel ensures that the ski stays on top of deep snow, while the narrow centre allows for quick, powerful switching of edges. Its great versatility makes this ski perfect for use on the trail and by sport ski tourers as well.	A broad touring ski with good distance qualities, it is ideally suited for sport climbers/tourers. The high resistance to torsion and the balanced side cut line make this ski the perfect companion for advanced skiers and connoisseurs, even on steep terrain.	A spring time ski, that makes no compromises in it's technical. The specialist know to appreciate it. A sintered base and high-strength laminates support the skiing pleasure. A strong side cut, a wide tip and an explosive rebound are the key features of this ski.



SkiTouring ST 5.0 W



FreeTouring Se7en Summits



FreeTouring Mustagh Ata



FreeTouring FT 10.0



FreeTouring FT 7.0



FreeTouring FT 6.0



FreeTouring

Ski Collection

Gliding Weightlessly

Dynafit is closing the gap between heavy downhill-oriented freetouring skiers and light skitouring equipment. The new FreeTouring models glide especially well and are also very easy to control in extreme situations.

FREETOURING	SE7EN SUMMITS	MUSTAGH ATA	FT 10.0 ^{CARBON}	FT 10.0 W	FT 7.0	FT 6.0
ART. NO.	48171/9210	48081/ 0010	48003/ 9732	48082/ 9135	48083/ 9220	48005/ 9219
LENGTH	156 163 170 178	169 178	169 178 187	169	159 169 177	160 170 180
WEIGHT	1150g 1230g 1420g 1390g	1480g 1580g	1590g 1690g 1760g	1590g	1450g 1560g 1620g	1350g 1420g 1530g
SIDE CUT	111-78-98 113-78-100 113-78-100 113-80-100	116-86-109 118-88-110	116-86-109 118-88-110 122-88-111	116-86-109	110-78-100 116-80-106 118-82-106	111-72-101 111-72-101 111-72-101
RADIUS	11.6 m 13.1 m 24.0 m 15.6 m	20.9 m 24.0 m	20.9 m 24.0 m 24.6 m	20.9 m	15.9 m 16.0 m 17.9 m	15.0 m 17.0 m 19.0 m
CORE CONSTRUCTION	paulownia wood/beech with spring steel inserts	paulownia lightwood core, edge to edge	paulownia lightwood core	paulownia lightwood core, edge to edge	highly elastic abachi wood core with explosive surfacing characteristics	poplar wood core with microcell strengtheners
LAMINATE	Multiaxial Quadrax fibre glass	carbon inserts over the entire length of the ski	sophisticated carbon laminate with a specially-developed structure	sophisticated carbon laminate with a specially-developed structure	very sturdy triple-layer fibreglass laminate	Titanal reinforcement and carbon fibre inserts
RUNNING SURFACE	Black sintered PE with Dynafit stamp	Nano-high-speed race base with die-cut logo and structural polish	Nano-high-speed race base with die-cut logo and structural polish	Nano-high-speed race base with die-cut logo and structural polish	transparent, sintered surface with a microstructure	transparent, sintered surface with a microstructure
CHARACTERISTICS	The SE7EN SUMMITS Ski symbolises the highest mountains of all seven continents where skiers encounter the most varied of snow conditions and terrain types. This ski is ready to face all challenges, from the sheer north face of Mt. Everest to the extreme weather and snow conditions on Mt. Vinson. The wide side cut curvature in the front and the tighter curvature in the back of the ski make for a large margin of error while providing precise control on all terrain and snow types.	A living legend. The world's first ski with a lightweight paulownia wood core paves the way for a new dimension of ski construction. This ski will carry you up the mountain like you were flying and is ideal for steep and deep adventures down the planet's dream descents.	The ultimate companion for "dropping in" on the backcountry's best powder. Free-tourers have never had big-mountain and off-piste skiing so easy. Big, fast, sweeping turns and deep powder have never been so easy. Lightweight construction is ideal for advanced skiers and alpinists who are looking for a ski that is easy to control even in extreme situations and that has a nose for untracked lines.	The first super-light FreeTouring Women's Ski was custom-made to fit the needs of the next generation of female skitouring athletes. Shovel geometry for high-speed descents. Power-to-weight characteristics for elegant deep-powder turns. Low torsion and a soft turning curve enable an elegant riding style in wide-ranging conditions. Women Specific by design.	The FT 7.0 is "Free" in the full sense of the word. It boasts Twin Tip construction for new school tricks and lateral reinforcement technology for especially direct distribution of force, along with the new side cut, these features make the FT 7.0 ideal for showing agility in every turn.	Perfect for deep snow but also for icy or slushy spring snow. A soft, highly flexible shovel with a high resistance to torsion, especially around the binding, makes for easy skiing. An ideal ski for those who are in search of a classic or progressive freetouring experience.



FreeTouring FT 10.0 W



SkiRunning SR 11.0



SkiRunning SR 8.0



SkiRunning SR 7.0



SkiRunning

Ski Collection

The winning series in light ski construction

SkiRunning is a field dominated by Dynafit. It started in the boot and binding segment and in 2005 added skis as well. The international Dynafit Team has celebrated countless victories, and each time has made an improvement to the full range of SkiRunning products.

SKIRUNNING	SR 11.0	SR 8.0			SR 7.0		
ART. NO.	48000/ 9035	48001/ 9035			48002/ 9047		
LENGTH	160	150	160	170	150	160	170
WEIGHT	850g	750g	875g	950g	880g	1020g	1140g
SIDE CUT	90-62-76	88-61-74	93-67-83	93-67-83	88-61-74	93-67-83	93-67-83
RADIUS	25.0 m	20.4 m	23.0 m	26.0 m	20.4 m	23.0 m	26.0 m
CORE CONSTRUCTION	paulownia lightwood core, edge to edge	honeycomb core with quaruba lightwood inserts			solid wood core made of a special poplar lightwood		
LAMINATE	00% carbon tension cord and 100% carbon compression cord, vibration-absorbing mounted edges	100% carbon tension cord and 100% carbon compression cord, vibration-absorbing mounted edges			Carbon fibre from edge to edge		
RUNNING SURFACE	stone-ground nano-high-speed race base with a perfect disk finish	stone-ground nano-high-speed race base with a perfect disk finish			Polished graphite race base with internal structure		
CHARACTERISTICS	A racing ski that incorporates the secrets of our racing and development teams. New materials and innovative production techniques combined with radical side cut geometries are the formula for this winning ski. A concept that is always changing and pushing the limits of ski construction techniques.	The complex core construction and the use of high-end laminates make this the ideal ski for those interested in optimising their weight. A ski that combines skirunning and alpine style. Light turns and excellent edge traction in steep and narrow terrain, and at the same time a weight-to-performance ratio without equal. A lightweight ski that demanding skiers will rave about.			Central side cuts, a perfect weight-to-performance ratio, and excellent stability even in very difficult conditions: these are the qualities that extreme ski tourers, mountain climbers and advanced skiers and connoisseurs treasure. A ski for difficult terrain, long climbs and steep, narrow descents. Skitouring, alpine-style.		



Binding System

Superior quality always wins out in the end
Very light.

Ultra-stable. Comfortable. Secure.

Evolution has proved it once again: the stronger always wins out in the end. At the peak of the racing skiers evolutionary pyramid, the Dynafit System has won market share of more than 90%. Not least because it is much lighter than the other bindings and because the binding release and securing locking system is up front, where it should be.

The advantages of the Dynafit System are easy to explain, and, thanks to the facts, which speak for themselves, easy to understand:

- up to 75% (1,500 grams per pair) lighter than other bindings
- weight reduced to the minimum (other bindings lead to up to 6 tonnes of increased load at 1,000 metres)
- more anatomically correct, energy-saving binding release (-10mm)
- lower in height for more direct contact with the ski (no "stilt" effect)
- four points for distribution of force resulting in greater stability during quick descents

New features for 2007/8

- unique super-light "Low Tech Race" binding model with an unbelievable total weight of 160g
- optimised resistance and stability for even greater safety
- perfect compatibility with all skis and ski boots

The Dynafit System will continue to make further progress in setting binding standards during the 2007-2008 season.





BindingSystem Quick-Step-In-System

Easiest attachment of all time
Quicker. More precise. Simpler.

Ok, we admit it, sometimes skitourers find the Dynafit System a bit complicated when they first see it. Those with more experience, on the other hand, say just the opposite. Why? Because the Dynafit System works differently than old-fashioned bindings: it establishes a direct attachment between boot and binding. Anyone who has tried it two or three times finds that it is child's play. Using the "Quick-Step-In" binding is as simple as following these easy steps:

1. Put your heel down on the heel support
2. Set down the ball of your foot and press down with your toes
3. Move the Dynafit Inserts forward in the boot
4. Engage the lever by pulling back lightly with your finger
5. To open, push the lever down with your ski pole

The Dynafit System can be used with ski poles on the most varied types of ascents and different terrain types you encounter during your ski tours. Adjusting the System is as simple as:

6. Engage the heel support with your ski pole
7. Set the climbing position by pushing lightly with your ski pole
8. The higher position is also ideal for steep terrain

The simple precision of the Dynafit System works in all conditions: Cold weather. Deep snow. Even on steep, difficult terrain.



1



2



3



4



5



6



7

Vertical. The vertical starter.

Ergonomic. Precise. Beautiful. How could anyone possibly improve the lightest and most successful ski tour binding in the world? Dynafit's engineers and designers have done the seemingly impossible. They conducted ergonomics and torsion studies, labour tests, and field tests, poring over every little detail and making gradual improvements. We call the result VERTICAL. The name suggests another few metres of altitude, a Dynafit product that ensures maximum safety even during the steepest descents.

TLT Vertical FT

with Stopper 92mm, 48154/ 9173

with Stopper 100mm, 48155/ 9173

The lightest FreeTouring binding in the world.

Dynafit has applied its time-tested lightweight technology to its new Vertical Design series. For the first time, Dynafit Designers succeeded in combining the extreme stability and torsion requirements of ski tourers with the lightweight needs of free tourers. The patented four-point binding system and the close attachment to the ski lead to a revolutionary new conception of boot, ski and binding that takes things to a whole new level compared to traditional bindings.

Super-lightweight bindings with astonishing torsion capacity for maximum free touring pleasure.

TLT Vertical ST

TLT Vertical ST w/o Stopper, 48153/ 9779, mud 410 uni

TLT Vertical ST with Stopper 82mm, 48151/ 9779, mud, uni, 530

Symbiosis between innovative design and lightweight technology

Dynafit engineers and designers have taken the material to a new level, especially with this Vertical Model. The goal was to meet diametrically opposed needs of maximum lightness in the most important areas: the ski stopper, rotation control, and all points of transmission of force. The need for extreme resistance in the rear binding and the crampon fixation made it necessary to calculate new structural ratios and chose the most suitable materials with extreme care. The result is amazing:

- 20% greater resistance
- greater comfort of use combined with greater lightness
- more precision in transmission of force



Weight:	500
Colour:	yellow/ cool grey
Material:	Titanium, Titanal, stainless steel
Release capacity:	5-10
Target group:	FreeTourer, FreeRider



Weight:	410 530
Colour:	mud
Material:	surfaces: refined stainless steel, high-quality UV-sealed plastics, high-alloy spring steel
Release capacity:	5-10
Target group:	FreeTourer, SkiTourer

BindingCollection



Weight: 250
Colour: yellow/ titan
Material: Titanium, Titanal, stainless steel
Release capacity: 5-10
Target group: SkiRunning-racers



Weight: 160g
Colour: yellow/ titan
Material: Cast titanium/high resistance aluminium
Release capacity: ??????
Target group: SkiRunning-racers



TLT Vertical Race^{Ti}

48150/ 9172

"Half Step" Construction for longer strides

The International Dynafit Racing Team's athletes experimented with various types of raised climbing positions combined with stride length and stride frequency. This new Half Step Construction lowers the heel position by 50%, permitting stride length to be increased by up to 5 cm. If stride frequency remains the same, this leads to an advantage of up to 300m per 1,000 metres of elevation. In combination with the optimised weight-to-resistance ratio, this makes the TLT Vertical Race Ti the number-one choice for skitouring athletes and performance-oriented skitourers all over the world.

The most modern technology at the highest level for first-class performance.

Low Tech Race

48175/ 9130

The lightest binding in the world.

Dynafit engineers have achieved the impossible in the binding development sector, further reducing the weight of their bindings. The world's lightest ski tour binding has become even lighter. The new binding, conceived exclusively for racing and extreme conditions, was developed in close collaboration with the International Dynafit Racing Team. **A binding that deals with the DIN regulations and release capacity issues in a simple, elegant manner.**

TLT Speed lite

48099/ 9170

The new standard in lightweight construction

Based on the successes of its 2005/2006 season, Dynafit has introduced the TLT Speed Lite model, optimised and reduced in weight. The designers cut out all superfluous details that add unnecessary weight for ski touring and racing. The result is an astonishing 275g with full functionality and stability. **Optimised function and reduced weight for perfect performance.**

TLT Speed

48023/ 9170

Less is much more

The TLT has been racking up one success after another for many years now. Countless experts have already used and appreciated several generations of the product. Not a snow-decked summit has yet to be scaled (or scaled again). This success is the result not only of reduced weight, but also of reliability and the perfect safety release system. **Legendary. A successful model for successful sales.**



Weight: 275
Colour: dark grey
Material: surfaces: refined stainless steel, high-quality UV-sealed plastics, high-alloy spring steel
Release capacity: 5-10
Target group: SkiRunning-racers



Weight: 335
Colour: dark grey
Material: Aluminium, stainless steel, special plastic
Release capacity: 5-10
Target group: Ski runners and ambitious ski tourers





Material: surfaces: refined stainless steel, high-quality UV-sealed plastics, high-alloy spring steel
Release capacity: 5-10
Target group: ski tourers, free riders and skiers of various types



Peso: 600 g
Colore: mud
Materiale: superficie in acciaio inossidabile, plastica di alta qualità resistente ai raggi UV
Capacità di sgancio: 5-10
Gruppo target: SkiTourer, FreeRider e sciatori particolarmente eclettici



TLT Comfort

without Stopper 48022/ 9170, grey, 385 g
with Stopper 48021/ 9130, 82 mm, silver, 505 g

Maximum comfort - very low weight

The TLT Comfort leaves nothing to be desired. It is easily adjustable to various lengths, and the multifunctional ski pole mechanism makes it easy and efficient to change climbing positions. Its efficient distribution of force makes it suitable for various skiing styles, one reason why you will see it more and more often on the world's ski trails.

- Integrated ski brake/stopper.
- Easy-to-set climbing position by ski pole
- High quality metal surfaces
- Optimised weight of all metal components

The high-comfort binding that leaves nothing to be desired in terms of free or ski touring.

TLT Vertical Rental

48076/ 9779, mud, 600g

Rent-a-Dynafit - an easy business hit

Dynafit is making the wishes of many ski rental businesses come true. For the first time, renters can use the time-tested 56mm adjustment Dynafit Binding System, which can be adjusted in a matter of seconds, and, thanks to its patented four-point Dynafit attachment system, perfectly fitted to the ski boot. Demo Fleets will be a breeze to offer.

Shall we wager that your entry into the world of Dynafit's speed and lightness will be all the easier and more satisfying as a result?

Binding accessories

Ski Stopper TLT Vertical+Comfort - 82 mm 43205/ 9779 Mud 120 uni
Ski Stopper TLT Vertical+Comfort - 92 mm 43206/ 9779 Mud 120 uni
Ski Stopper TLT Vertical+Comfort - 100 mm 48074/ 9779 Mud 120 uni
Crampons 82mm 46601/0099 UNI 92 uni
Crampons 92mm 43106/ 0098 UNI 100 uni
Powder Leash 48163/ 0098 UNI uni
Ski Finder Leash 43225/ 0098 UNI 5 uni



SkiBootTechnology

Lightness and Performance

Science, technology and ... art

Going from an initial sketch to an actual ski boot is a long and complex operation. It calls for a blend of science and considerable knowledge of materials, functions, market requirements and human anatomy, and, above all else, many years of experience in developing the best ski boots around. Thanks to Mario Sartor and his team of professionals, this is what we have at the Salewa Ski Development Centre in Montebelluna.

The first prototype to be produced, used to develop the mold for the shoe, is manufactured entirely by hand out of wood and resin. This is the hardest part of the production process, with experience, technology and art all coming together to form the perfect boot. Indeed, only a few people in this world are able to carry out this work.

Materials:

The thickness of the shell is studied to ensure that our ski boots remain the lightest and best performing on the market in terms of hold and downhill performance. To get this result, only the most expensive, high-quality materials and composite fibres available are used in their making:

Pebax® und PU for the shell and cuff: the two best materials when it comes to performance. They absorb very little humidity, which in turn makes them very stable when exposed to temperature fluctuations. Pebax® is very light and extremely stable, and therefore ideal both for ensuring top performance and coping with large temperature variations. PU is heavier, but has better bending behaviour, which in turn helps improve the downhill performance of the ski boot.

Carbon Fiber or Rilsan are two extremely stiff materials used for our Powerstringer technology and as instep protection. They provide lateral strength and torsional rigidity. Carbon is lighter, more rigid and much more expensive, while Rilsan is the hardest plastic that can be used on an elastic part of a ski boot.



The last is the first component to be focused upon in the ski boot creation process and is also the most important component. The perfect last represents the first step towards achieving the final result - the perfect boot.



weight only
1595 g



The lightest ski-boots on the market*

(1) Carbon Fibre Powerstringer: The carbon Powerstringer is used to improve the rigidity, supporting effect and downhill performance of this boot range. The use of carbon is unique on the market and results in top performance both in terms of functionality and lightness. The Zzero line models that do not use carbon use Rilsan instead, a very hard and supporting plastic that provides top performance at a lower price.

(2) TF-Thermoflex Liner: An improved version of our super-light thermoformable liner, with a new collar shape for more comfort and with more resistant materials on the internal and external lining for more durability. With an easy thermoforming operation it perfectly adapts to individual foot shapes for a real custom made feeling.

MF-Multiform Liner: The lightest and more comfortable traditional construction liner on the market. Thanks to the best choice of materials and our experience we reached the incredible result to create a traditional inner boot, extremely comfortable and durable, only heavier about 100gr than a thermoformable liner. It's also very supportive, warm and breathable.

(3) Magnesium buckles: The micrometrically-adjustable clasps are made out of magnesium and are weight-optimised in terms of shape. The steel ring is designed in such a way that it cannot slip out of the buckles, but it can still be easily removed with the help of a tool in the event of breakage. The toothed cuff-buckles catches can be easily set to three different positions using the bundled hexagon screwdriver. Floating hooks also secure the buckles when left completely open for walking.

(4) Tongue: The tongue of the Zzero boot is designed to anatomically match the shape of the foot. It is high and stiff enough to enable the skier to ski on the metal edges of his skis, while the bellows mean that it is soft enough to ensure flexibility when walking. The tongue is also attached in such a way as to include 5mm of movement space, which is of decisive importance when walking. A special carbon or Rilsan insert is anatomically positioned to protect the instep from buckles pressure without adversely affecting walking behaviour or flexibility. The tongue also possesses a wide, open shape that guarantees high walking comfort when wearing the boot.

(5) Ski-walk mechanism: The new, patented ski-walk mechanism is, according to studies, currently the easiest to activate on the market. It can be set to two ski positions - 15° and 21° - as well as loosened for walking.

(6) Outer sole: The ultra-light DynaGrip outsole is designed to provide maximum grip in all weather conditions. Thanks to the shaped driving channels, the sole fits perfectly into all Dynafit bindings and already fulfils all the requirements contained in the upcoming ISO 9523 standards. Horizontal and vertical grooves mean that the sole provides perfect hold in all directions and a very minimalistic design makes it as light as possible. The PU wedge, which runs from the heel to the toes, is lighter than rubber and offers supreme protection against the cold.

*Compared to ski boots for similar activity and equivalent performances

Free Touring



The most exclusive.
Lightness and
performance.



Liner Zzero High MF



Liner Zzero High TF

Zzero⁴ C-MF / Zzero⁴ C-TF

Art.Nr: MF: 61027/5130 TF: 61017/5130

COLOUR: Translucent Green

Shell/ Cuff: Pebax® Tongue: Pebax®, Carbon

Powerstringer: Carbon

Buckles: 4 Magnesium + Power Strap

Forward lean: 15,21+ release for walking

Cuff Rotation: 30°

Sole: DynaGrip Ultralight

Weight: MF: 1745g (Size 27,5) TF: 1595g (Size 27,5)

Sizes: 25-30,5 + 1/2 sizes

Bindings: Dynafit Quick step-in / UNI

Target group: All SkiTourers and FreeTourers who expect top performance in all conditions and who wish to stand out from the crowd.

This new, revolutionary ski boot offers optimal downhill support as well as maximum freedom of movement when ascending, while the combination of boot and liner means first-class comfort. The material mix of Pebax® on the cuff, shell and tongue, carbon on the Powerstringer and instep protection, and magnesium on the buckles, together explain why this boot is so versatile in terms of use and why it is currently the lightest 4-buckle boot on the market. The new Multiform liner is the lightest traditional liner around and complements the Zzero4 C perfectly. Available also with our new super-light thermoformable Thermoflex liner.

The lightest high performance 4buckles on the market

FreeTouring



Zzero⁴ PX-TF

Art.Nr: 61037/2400

Colour: Translucent Yellow

Shell/ Cuff: Pebax® Tongue: Pebax®, Rilsan

PowerStringer: Rilsan

Buckles: 4 Magnesium + Power Strap

Forward Lean: 15, 21° + release for walking

Cuff Rotation: 30°

Sole: DynaGrip Ultralight

Weight: 1590g (Size 27,5)

Sizes: 25-30,5 + 1/2 sizes

Bindings: Dynafit Quick step-in / UNI

Target group: All SkiTourers and FreeTourers looking for the perfect boot in all weather and a more affordable boot than the Zzero 4 C.

The Zzero4 PX is the non-carbon version of the Zzero4 C. It is nevertheless constructed in the same way as the carbon version. This means that the boot is in no way inferior to the C model in terms of comfort, fit, and freedom of movement when ascending. The Zzero4 PX, however, uses Rilsan on the Powerstringer instead of extremely-rigid carbon, and this in turn makes it more forgiving in downhill. Compared with the other boots on the market, this boot offers top performance and is the lightest 4-buckles Ski-Touring boot available. The Zzero 4 PX is supplied with an with a thermoformable Thermoflex inner boot.

Free Touring



The most
aggressive
4 buckles

Zzero⁴ U-MF

Art.Nr: 61047/1600

Colour: Transparent Red

Shell/ Cuff: PU Tongue: Pebax®, Rilsan

Powerstringer: Rilsan

Buckles: 4 Magnesium + Power Strap

Forward Lean: 15,21° + release for walking

Cuff Rotation: 30°

Sole: DynaGrip Ultralight

Weight: 1860g (Size 27,5)

Sizes: 25-30,5 + 1/2 sizes

Bindings: Dynafit Quick step-in / UNI

Target group: Downhill-oriented skiers who expect top performance on descent, but who also wish to be able to cover large distances on touring.

The Zzero 4 U is the polyurethane version of our 4 buckles range. With its transparent red colour, this is the most striking and most downhill-oriented boot in the collection. Although its weight is slightly higher, it offers incredible freedom of movement on ascent. It is also the lightest 4-buckles polyurethane boot compatible with our bindings. It is supplied with a Multiform liner, the lightest and most traditional liner on the market.

The 3 buckle
benchmark

SkiTouring



Zzero³ C-TF

Art.Nr: 61057/5130

Colour: Translucent Green
Shell/Cuff: Pebax® Tongue: Pebax®, Carbon
PowerStringer: White carbon fiber (shell only)
Buckles: 3 Magnesium + Power Strap
Forward Lean: 15,21° + release for walking

Cuff Rotation: 30°
Sole: DynaGrip Ultralight
Weight: 1455g (Size 27,5)
Sizes: 25-30,5 + 1/2 sizes
Bindings: Dynafit Quick step-in / UNI

Target group: All SkiTourers who undertake long tours that include large altitude differences and still expect top downhill performance.

The Zzero3 carbon is the perfect SkiTouring boot. Weighing just 1455g, it is extremely light, has considerable freedom of movement around the cuff and provides enough support to enable optimal downhill performance. The cuff and the shell are made out of Pebax®, the boot has a carbon Powerstringer and instep protection, 3 micrometrically-adjustable magnesium buckles, a new, patented ski-walking mechanism and is the lightest 3-buckles ski boot to have such a supportive structure. The boot is the optimal choice for anyone looking for a quick, light and agile touring ski boot, but at the same time does not wish to compromise on downhill stability.

The boot is lined with the super-light, thermoformable TF liner.

POWER STRINGER

SkiTouring

The lightest
high performance
3 buckles
on the market



Liner Zzero Mid MF

Liner Zzero Mid TF

Zzero³ PX-MF / Zzero³ PX-TF

Art.Nr: MF: 61067/4510 TF: 61077/4510

Colour: Metal Orange

Shell/Cuff: Pebax® Tongue: Pebax®, Rilsan

Powerstringer: Rilsan (shell only)

Buckles: 3 Magnesium + Power Strap

Sizes: 25-30,5 + 1/2 sizes

Cuff Rotation: 30°

Sole: DynaGrip Ultralight

Weight: MF: 1610g (Size 27,5) TF: 1450g (Size 27,5)

Sizes: 25-30,5 + 1/2 sizes

Bindings: Dynafit Quick step-in / UNI

Target group: All SkiTourers and FreeTourers looking for a perfect ski touring boot for long distances and for tours that include many ascents and descents, as well as for a less expensive alternative to the Zzero3 C.

The Zzero4 PX is the non-carbon version of the Zzero3 C. It is nevertheless constructed in the same way. This means that the boot is in no way inferior to the C model in terms of comfort, fit, and freedom of movement when ascending. The Zzero3 PX, however, uses Rilsan on the Powerstringer instead of extremely-rigid carbon, which makes it more forgiving in downhill. Compared with the other boots on the market, this boot offers top performance and is the lightest 3-buckles SkiTouring boot available. The new Multiform liner is the lightest traditional liner on the market and complements the Zzero3 PX perfectly. Available also with our new super-light thermoformable Thermoflex liner

The lightest
skiable
2 buckles

SkiRunning



Zzero² C-TF

Art.Nr: 61087/3790

Colour: Dark Blue

Shell/Cuff: Pebax® Tongue: Pebax®, Carbon

Powerstringer: White carbon fiber (only shell)

Buckles: 2 Magnesium + Power Strap

Forward Lean: 15,21° + release for walking

Cuff Rotation: 30°

Sole: DynaGrip Ultralight

Weight: 1395g (Size 27,5)

Sizes: 25-30,5 + 1/2 sizes

Bindings: Dynafit Quick step-in / UNI

Target group: All skiers looking for a super-light and fast ski boot with which to undertake long tours that include large numbers of ascents and descents, and who also wish have fun and feel safe on downhill.

The Zzero 2 C is the lightest SkiTouring boot on the market. It is designed for those whose overriding priority is lightness and agility, but who nevertheless seek stability and support on descent. The boot is the only one of its kind to include two micrometrically-adjustable magnesium clasps, a ski-walk mechanism and carbon fibres for optimal support on descent and as instep protection.

The Zzero2 C is available with the ultra-light Thermoflex inner boot.

POWER STRINGER

SkiRunning



TLT Race Pro TF

Art.Nr: 48016/9722

Colour: Silver/Orange

PowerStringer: Frianyl

Tongue: Pebax®

Buckles: 1 Polycarbon + Power Strap

Cuff Rotation: 17° + release for walking

Target group: SkiRunning racers

Forward Lean: 42°

Sole: DynaGrip

Weight: 1220g (Size 27)

Sizes: 22-31, 32 + 1/2 sizes

Binding: Dynafit

The lightest ski touring boot around with a detachable sole.

The shell has been widely milled at the back to allow especially rapid and large steps in competitions. A top model with countless adjustment and weight optimisation possibilities, and the first choice of winners.





TLT 4 lite TF

Art.Nr: 48019/9718

Colour: Black/Orange

Shell/Cuff: Vestamid Tongue: Pebax®

PowerStringer: Frianyl

Buckles: 2 Polycarbon + Power Strap

Cuff Rotation: 17° + release for walking

Forward Lean: 24°

Sole: Dynagrip

Weight: 1330g (Size 27)

Sizes: 22-31, 32 + 1/2 sizes

Binding: Dynafit

Target group: Sporty SkiRunners and climbing-oriented SkiTourers

The universal lightweight boot. The new, even lighter 2-clasp variation of the TLT 4 Evo for the climbing-oriented SkiTourer. A shortened sole construction for good rolling behaviour and comfortable walking. The Powerstringer made out of glass-fibre strengthened plastic and the one-piece tongue ensure good power transmission on descent.

The removable spoiler, the ultra-light Walk&Ride system and the new micrometrically-adjustable clasps allow even better adjustment of shell pressure with simultaneous weight reduction. A strengthened Thermoflex inner boot with tongue construction provides sensational walking comfort without any bruising. Perfect for racing, with ergonomic walking comfort and stable lean-forward fixing for rapid descent. Also ideal for ultra-light, fast, high altitude ascents and descents.



Liner TLT 4 MF



Liner TLT 4 TF



TLT 4 Evo MF

TLT 4 Evo TF

Art.Nr: MF: 48017/9722 TF: 48018/9722

Colour: silver/orange

Buckle/ Cuff: Vestamid Tongue: Pebax®

Powerstringer: Frianyl

Buckles: 3 Polycarbon + Power Strap

Cuff Rotation: 17° + release for walking

Target group: climbing-oriented SkiTourers

Forward Lean: 24°

Sole: Dynagrip

Weight: MF 1580 g (Gr.27) TF 1400 g (Size 27)

Sizes: 22-31,32 + 1/2 sizes

Binding: Dynafit

A lighter, revised model for climbing-oriented SkiRunners and SkiTourers. The shortened sole construction ensures good rolling behaviour and comfortable walking, while the rubber sole offers perfect hold when walking on land and has very good absorption characteristics. The Powerstringer made of glass-fibre strengthened plastic, and the two-piece tongue ensure good power transmission on differing descents, and the removable spoiler and extremely light Walk&Ride system round off its area of application.

The micrometric adjustable aluminium clasps allow even better adjustment of shell pressure with simultaneous weight reduction. A comfortable inner boot with a loden lining for high warmth and an ideal microclimate.

TLT 4 Evo-TF: Verstärkter Thermo-Flex Innenschuh mit Zungenkonstruktion für sensationellen Gehkomfort ohne Druckstellen.



Zzero High MF

Art.Nr: 65027/0300
Weight: 360 g
Color: silver / black
Sizes: 25.0 - 30.5



Zzero Mid MF

Art.Nr: 65047/0300
Weight: 340 g
Color: silver / black
Sizes: 25.0 - 30.5

The new, innovative Zzero collection MF liners combine the comfort, breathability and abrasion strength of traditional liners with the ultra-lightness of Thermoflex liners. Weighing just 360g (High) and 340g (Mid) respectively, these are the lightest conventional liners on the market. Only the best materials are used in Zzero MF liners, e.g. Cordura for the external liner; expanded PE for the padding to enable perfect breathability and insulation; and MicroPile for the lining to ensure maximum comfort and protection from the cold. Zzero liners also feature so-called HLS, or „Heel Locking System“ to ensure good ankle positioning within the boot. The models are available in two heights and therefore fit perfectly into Zzero 4 and Zzero 3 boots.



Zzero High TF

Art.Nr: 65017/0901
Weight: 260 g
Color: black / silver
Sizes: 25.0 - 30.5



Zzero Mid TF

Art.Nr: 65037/0901
Weight: 250 g
Color: black / silver
Sizes: 25.0 - 30.5

The TF liners of the Zzero collection fit into the new Dynafit Zzero boots perfectly. Thanks to the use of Thermoflex, they adapt to the shape of each foot and therefore guarantee a perfect fit. In addition, the special shape at the end of each liner provides even more comfort.



TLT 4 MF

Art.Nr:	48165/0999
Wight:	410 g
Color:	blue / black
Sizes:	22.0 - 32.0

MF: The classical Multiform liner with loden lining, high > performing insulation and breathable micro climate. The liner is equipped with a quick-lacing system and offers the optimum of insulation, comfort and temperature due to it's material mix. Additionally the liner has a Multiform footbed which is adapting to each feet individually.



TLT 4 TF

Art.Nr:	48166/0999
Wight:	230 g
Color:	black / silver
Sizes:	22.0 - 32.0

TF: The innovative Thermoflex liners with a micrometric fine adaption to every feet shape. The new reinforced Thermoflex liner with Velcrostrap combines with it's material mix a good > protection and fit in heel area with a lot of comfort and sensibility in toe area.

Dynafit Liner Models

Inner boot variations for an optimal fit.

While the outer shell is responsible for optimal power transmission, both during ascent and descent, the inner boot is decisive when it comes to fit, wearing comfort and a sure hold. Furthermore, blisters and bruises, for many SkiRunners, SkiTourers and FreeTourers a never-ending source of misery, can largely be avoided. Dynafit offers two different systems.

MF: The classic Multiform inner boot with a loden lining, high thermal insulation and a breathable microclimate. The boot is equipped with a quick-lace system and its material mix means that it offers optimal wearing comfort, insulation and temperatures. The boot also has a multiform footbed that adapts itself to each foot.

TF: The innovative Thermoflex inner boot, with millimetre-precise adjustment for practically every foot shape. The material mix of the new strengthened Thermoflex liner with Velcroband combines solid protection and support in the heel area with a great deal of feeling and wearing comfort in the toe area.

Offer your customers the right choice. Your competent advice will lead to a sure, long-lasting fit and many enjoyable skiing tours.



SPEED UP

Dynafit lives and grows thanks to the "true stories" of its athletes. Each year they undertake new projects - from steep face climbs, through ski ascents of 8000-metre-high mountains, to speed crossings of the Alps - with each one taking the athletes and their equipment to their limits. Speed, lightness and performance are the keys to success in this. Dynafit's clear aim is to meet the high and highly-specialised requirements placed on functional clothing during ski touring.

The latest manufacturing technologies, highly-functional materials and a body-movement-adapted cut are the basis of our product development.

The close co-operation between the product developers and the Dynafit athletes leads to a direct exchange of experiences between the two, and this in turn allows the athletes' requirements to flow directly from the mountain into the products.

This was also how the FOUR ELEMENTS system was created.

The idea behind it was not only to have light and high-quality clothing, but also clothing that included a multifunctional temperature control system. The use of various materials, all of which are adapted to meet physical needs, creates a permanently pleasant body climate. The build-up of heat on ascending and the cooling of the body at the summit or on descent are both prevented by optimal wicking, wind and snow protection and by the clothing's thermal insulation.

Thanks to FOUR ELEMENTS technology, Dynafit touring clothing is now able to meet even higher requirements and demands, whilst offering first-class comfort in all weather conditions.

Requirements such as those held by FreeTourers could hardly be more different or demanding:

A swift, powerful ascent involving high pulse rates requires good ventilation, high breathability and maximum freedom of movement, above all in the crotch and shoulder areas.

Quick, extreme descents in contrast require high wind and warmth protection, as well as stable, non-abrasive materials with intelligent endings at the arms, head and legs.

The Dynafit FreeTouring collection astounds with its:

Biomechanical design

Designed for FreeTourers, with the design taking into account movements, muscle structures, swe-

ating behaviour, and temperature development. The unlimited movement possibilities bring together cross-country, SkiTouring, alpine and outdoor know-how.

Integrated design

The material, sartorial technology and finish together form an inseparable unit: waterproof, windproof, aerodynamic, and temperature-controlling. Many parts are laser-cut, high-frequency bonded or glued across several layers using tape sealing.

- Innovative details
- Ventilation system in all critical areas.
- Elastic inserts for more freedom of movement.
- Correctly placed pockets for all utensils.
- Selected materials:
Schoeller®, Gore-Tex® XCR, Packlite®, WINDSTOPPER, POLARTEC WINDPRO and others.
- Innovative processing: bonded, glued, sewn.

Steam (sweat)

wind/ Rain

Protective layer

Gore-Tex Paclite Membrane

External material

GORE-TEX[®] PACLITE

GORE TEX Paclite

- Minimal weight: (78g/m²)
- Minimal packing size
- Waterproof (water column < 28.000 mm)
- Extremely breathable (Ret <6)
- GORE-Tex-GPS2 rain-tested

Steam (sweat)

wind/ Rain

Protective layer

Gore Tex SCR membrane

Inner lining

GORE-TEX[®] XCR

- Minimal weight: (128g/m²)
- High abrasion strength thanks to the extremely robust nylon as outer material
- Waterproof (water column < 28.000mm)
- Extremely breathable (Ret <6)

Steam (sweat)

wind/ Rain

Extremely resistant

Gore-Tex[®] Membran

New 15 Denier woven base layer

GORE-TEX[®] PRO SHELL[®] (TITANIUM)

New Gore-Tex 3-layer laminate, representing a unique combination of robust external material, new 15-denier woven supporting material and a membrane.

3L Gore-Tex Pro Shell laminates feature a thin, low-strength, woven supporting layer instead of knitted fabric.

- Increased resistance
- High breathability.
- Clear lines.
- Less weight.
- Uncompromising comfort

Dries quickly

Wind-repellent and breathable

Good insulation and down-like compressibility

Extremely water-repellent and retains warmth even when wet

Efficient thermal capacity

PRIMALOFT

Insulation Technology

- Wind-resistant and breathable
- Dries quicker than down
- As warm, soft and compressible as down
- Highly water-resistant
- Retains its warmth characteristics even when wet
- Primaloft One lining absorbs 3x less water, is 15% warmer when dry, and 24% warmer when wet than comparable lining materials

Sweat

Water/Snow

Wicking and insulated lining

"3XDRIY-treated" external material

schoeller

- Extremely breathable (500 l/m²)
- Water- and snow-resistant surface thanks to a special coating
- Good warmth insulation thanks to a chamber-incorporating design
- Bi-elasticity for perfect freedom of movement
- High abrasion strength

Steam (sweat)

Material

Wind

Rain

Body Heat

DIAPLEX

3 LAYER

Diaplex can also be termed a "self-regulating material". It adapts itself to its environment, so that high comfort and a pleasant "feel-good climate" are always guaranteed.

When temperatures are low, the polymer molecular chain forms a closed surface and prevents the body from cooling by stopping warmth and steam from escaping to the outside.

When temperatures rise, the molecular chain alters accordingly. Spaces are formed, through which heat and sweat are then released to the outside, thereby preventing unpleasant humidity from forming inside the clothing.

Windstopper[®] Membrane

External material

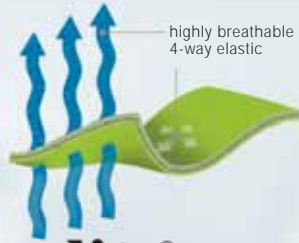
Wind

Internal lining

Sweat

WINDSTOPPER[®]

- Very light (65g/m²)
- High abrasion strength thanks to the special knit design on the upper surface
- Extremely breathable
- WS ARGON combines lightness, wearing comfort and breathability, resulting in a highly functional material



highly breathable
4-way elastic

polarlite[®]
ORIGINAL QUALITY FLEECE
DYNastretch

Polarlite Dynastretch consists of extremely fine fibres that together form a soft, lightweight fleece. The highly breathable, 4-way elastic material is napped on the inside and thereby able to insulate perfectly. The soft surface means the material is very abrasion-resistant.

- 4-way elastic
- keeps the skin dry due to its high moisture transport
- wind- and abrasion resistant
- sensitiv next-to-skin (convenient to wear)



The four elements of Dynafit clothing

Fire = Insulation/ Isolation

High-quality filling materials ensure optimal thermal capacity

- Primaloft ONE
- 90/10 goose down 800-fill power
- Long-fibre fleece

Earth = Durability/ Dauerhaftigkeit

Non-abrasive materials offer protection against tears and cuts caused by ski edges, crampons, rocks and ice

- Schoeller Dynatec
- Gore Tex Proshell
- Cordura Durastretch

Air = Breathability/ Atmungsaktivität

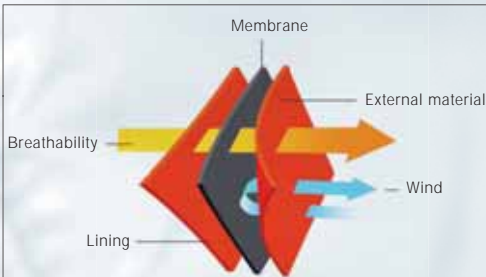
Light but nevertheless robust materials guarantee minimal packing size. Wind-protection and optimal wicking

- Gore-Tex Paclite
- Double-Mesh-Konstruktion
- Gore-Tex Proshell
- Gore Tex Windstopper
- Schoeller Helium
- Cordura Durastretch

Water = Waterproof/ Wasserdicht

Laminated 2- and 3-layer materials with highly breathable membranes. They offer perfect protection against snow and rain.

- Gore-Tex Proshell
- Gore-Tex Paclite
- Diaplex 3 layer



STORMWALL

Stormwall is a wind-repellent material developed to provide the wearer with a comfortable wearing experience and protection from the wind.

UNDERWEAR
MAN



870057



870067



870058



870059

UNDERWEAR
WOMEN



870060



870069



870061



870062

FIRST
LAYER



70047/70048



48183/48184



48185/ 48186



70052



70053

HYBRID
LAYER



70042/70041



70063/70064



70065/70066

Collection Matrix

SOFT
SHELL



70040/ 70041

INSULATION
LAYER



70044

HARD
SHELL



70039



70028/70029



70045/70046



70072



70027



70007



70026



70049



70030/31



70036

Technical windblock shirt

Man 870057 / Women 870060

Features:

- windblock insert
- skin-friendly
- close-fitting cut
- increased comfort and freedom of movement thanks to 4-way stretching

Material:

- main material: 86% PA 14% EL
- insert material: 92% PES 8% PTFE



Technical shorts

Man 870059 / Women 870062

Features:

- windblock insert
- skin-friendly
- close-fitting cut
- increased comfort and freedom of movement thanks to 4-way stretching

Material:

- main material: 86% PA 14% EL
- insert material: 92% PES 8% PTFE



Technical seamless shirt

Man 870067 / Women 870069

Features:

- optimal wicking via double-faced two-component fabric
- seamless technology
- close-fitting cut

Material:

- 54%PA / 46% PP





Ski Mountaineering Underwear

Dynafit underwear has been specially designed for the complex movements undertaken by SkiTourers. Biomechanical principles underlie the physically ergonomic shape of the garments, so that they fit the body perfectly and prevent pressure and friction points from developing during movement. The interplay of insulation, wind-protection and wicking is achieved by means of the intelligent implementation of the 4-Elements system. The use of seamless technology allows various material thicknesses and structures to be used without any seams being necessary. This results in the creation of special zones that increase insulation or wicking.

*BIONICS:

Bionics is concerned with the functions and structures of the locomotion system and with the movements of biological systems. The optimisation strategies of trees and vertebrates serve as a model for the design of high-strength components.

The task of sport bionics is to focus on questions of movement and posture as part of interdisciplinary research. It looks at performance sport (e.g. the optimisation of movements) and mass sports (e.g. the health effects of sporting movements).

Technical 3/4 pants

Man 870058 / Women 870061

Features:

- windblock insert
- skin-friendly
- close-fitting cut
- increased comfort and freedom of movement thanks to 4-way stretching

Material:

- main material: 86% PA 14% EL
- insert material: 92% PES 8% PTFE

Longsleeve Gasherbrum for men

Art: Nr. 48183 / Materiale: 90% cotone/10% elasthan / S-XXL

Cool shirt with a loose cut and a "big story" on the reverse. Small logo print on the chest and on the back, as well as an "animal" print on the sleeve.



2400 yellow 3510 winternight 7500 walnut 0900 black



Features:

- close-fitting cut
- breathable zones thanks to Right Fabric Placement
- higher comfort and freedom of movement thanks to the use of bi-elastic fabric

Material:

-polypropylen/polyamid/Elastin

Seamless First Layer G2 for men

Art. Nr. 70047/ 2400, 3510, 7500, 0900 / yellow, winternight, walnut, black / XS-XXL / 175g
Technical first layer with a dynamic design



Functional Longsleeve Se7en Summits for men

Functional Longsleeve Se7en Summits for men

Art: Nr. 48185 / Materiale: 100% poliestere, flat seams / S-XXL



Dynafit functional shirt for touring and afterwards. A two-coloured design with flat contrasting seams and a logo print on the chest and on the lower hem.



3510 winternight 6610 prugna 7500 walnut 0900 black

Features:

- new slit-system for easy ski-boot adjustment
- close-fitting cut
- preformed knees
- windproof inserts for the protection of the knee zones
- light bi-elastic and highly-breathable fabric

Material:

- Sensitive Power 80% PA / 20% EA
- windproof inserts
- crotch insert made out of x-static 3D-knitted fabric
- reflective stretch material on the hem
- SCHOELLER Keprotec as cut-protection against ski edges and crampons



Randonee Flex Pants

Art. Nr. 70053/ 3510, 6610, 7500, 0900 / winternight, prugna, walnut, black / XS - XL / 320g
SkiTouring flex pants. The use of Right Fabric Placement means that the suit offers wind protection, sweat control through breathable zones, and high freedom of movement.



first layer

The first layer of Dynafit clothing is responsible for directly transporting sweat away from the skin, thereby allowing the body to stay constantly warm and dry. This is best achieved using two-component fabrics.



3510 winternight
0900 black

6610 prugna
6500 raspberry

7500 walnut
0900 black

0900 black
0900 black

Avalanche racing suit

Art. no.: 70052/3510,6610,7500,0900
Colours: winter night, plum, walnut, black
XS - XL 630g

Ski touring racing suit. The use of Right Fabric Placement means that the suit offers wind-protection, sweat control through breathable zones, and high freedom of movement.

Features:

- new slit-system for easy ski-boot adjustment
- windproof inserts for the protection of the knees and lower back region
- hood
- mesh pocket for safe and easy storage of energy bars
- light bi-elastic and highly-breathable materials
- 2 quick and easily-accessible front pockets for storing racing skins
- preformed arms and knees
- close-fitting cut

Material:

- Sensitive Power 80% PA / 20% EA
- windproof inserts for the protection of the knees and lower back region
- back made of out x-static 3D-knitted fabric
- reflective stretch material inserts
- SCHOELLER Keprotec as cut-protection against ski edges and crampons

hybrid layer

The hybrid layer offers partial protection against wind and rain. The exchange of body heat and external air creates a pleasant body climate and thereby prevents the build-up of heat or the cooling of the body. It therefore provides sportsmen with optimal temperature balancing for mastering long tours.



Features:

- 1 breast pocket
- high water column and non-abrasive in the chest and shoulder areas thanks to the use of 3-layer material
- windproof front thanks to the use of Softshell
- highly-breathable back on account of a "double-mesh construction"
- Lycra trim on the waist and cuffs
- intelligent Diaplex structure: waterproof, air-permeable and anti-condensation

Material:

- shoulders: Diaplex 3-Layer (100%PA/PU-laminate/PA; water column <20000mm)
- body: Softshell light (windproof)
- back: "double-mesh construction"
- collar insert: 3D-mesh



Piz Palü Racing Vest for men

Art. Nr: 70063/ 7500, 0100, 0900 / Colore: walnut, snow, black / XS-XXL / 220g

Technical vest with a new sporty look. Functional thanks to Right Fabric Placement and a sporty look thanks to an ergonomic cut.

Earthquake lightweight jacket

Art-Nr:70042/ 2400, 3110, 0900 / Colore: yellow, rio, black / XS-XXL / 350g

An ultra-light and extremely hardwearing jacket made of Duras-tretch. A clear, dynamic design, an ergonomic cut and first-class comfort.



Features:

- adjustable waist size
- ventilation system with "welded" technology for the shoulders and back
- preformed elbows for optimal freedom of movement
- cuffs with thumbholes for a perfect fit
- 1 breast pocket, 1 underarm pocket
- ergonomic collar for a better fit and improved wind protection.

Material:

DST Silvershell- DWR finished (65% Nylon / Magic Silver / 12% Spandex)



Features:

- 1 breast pocket
- high water column and non-abrasive in the chest and shoulder areas thanks to the use of 3-layer material
- windproof front thanks to the use of Softshell
- highly-breathable back on account of a "double-mesh construction"
- Lycra trim on the waist and cuffs
- intelligent Diaplex structure: waterproof, air-permeable and anti-condensation

Material:

- shoulders: Diaplex 3-Layer(100%PA/PU-laminate/PA; water column <20000mm)
- body: Softshell light (windproof)
- back: "double-mesh construction"
- collar insert: 3D-mesh



Racing Jacket for men

Art Nr: 70065/ 0100, 7500, 0900 / Colore: snow, walnut, black / XS-XXL / 310g

Technical vest with a new sporty look. Functional thanks to Right Fabric Placement, and a sporty look thanks to an ergonomic cut.

soft shell

The Softshell layer keeps the body warm and dry even in wide-ranging temperatures. It also offers wind protection, effective insulation as well as comfort even during intensive movement.



7500 walnut

0900 black

Four Elements Softshell Jacket for men

Art.Nr: 70040/ 7500, 0900
Colore: walnut, black
XS-XXL / 490g

This technical jacket offers maximum climate adjustment and all-weather protection in wide-ranging temperatures

Features:

- extremely hard-wearing
- adjustable waist
- 1 breast pocket, 2 underarm pockets
- the new movement-based ventilation system transports sweat even faster to the outside
- a Durastretch insert guarantees high comfort, a perfect fit and freedom of movement
- perfect insulation thanks to Primaloft filling

Material:

- main material: Power Softshell, DWR finished woven (face: 88% PES + 12% PU / backing: 100% PES fleece)
- front material: DWR ripstop (100% Nylon)
- front padding: Primaloft ONE (60g filling)
- side and back material: Durastretch Lightweight (37% Tactel/ 36% Cordura / 15% Coolmax/ 12% Lycra)

soft shell



0900 black

7500 walnut



Features:

- wind-resistant
- enormous breathing activity thanks to "Schoeller Helium"
- warm-air storage insulation using chambers inside the material
- a great deal of freedom of movement thanks to the use of bi-elastic "Schoeller-Helium"
- preformed and non-abrasive knees
- removable snow guard at the waist with side alteration
- semi-elastic waistband with belt
- generous side ventilation with inner pockets
- hem-width alteration

Material:

- main material: Schoeller Helium (15% PU // 30% EL // 55% PA) 3XDRY
- snow guard and knee inserts: Stormwall
- Softshell Chess (woven // 100%PL)
- material insert in the lower leg area: waterproof 3-layer fabric and ski edge-/crampon-proof Schoeller Keprotec.



Pamir Touring Pants for men

Art. Nr: 70030/ 0900, 7500 / Colore: black, walnut / 44-54 / 650g

Description: Ski touring pants with a modern look and advanced technical specifications. Outstanding comfort thanks to the combination of different materials and a cut specially designed for movement ergonomics.

Light Shell Jacket for men

70027/ 0900 / Colore: black / XS - XXL / 160g

Description: Thanks to the use of Gore-Tex Windstopper and a cut specially designed for the movement ergonomics of SkiTourers, the „Light Shell Jacket“ is one of the lightest jackets on the market. The structured surface results in a technical look and high abrasion values.



Features:

- weight: 180 g
- compression bag (packing size = size of a cola can)
- windproof, highly breathable and quick-drying
- high abrasion strength

Material:

- Gore-Tex Windstopper / WS ARGON 30 2L (70% PA/30% PTFE)



0900 black



2400 yellow

7500 walnut

0900 black



Features:

- windproof and water-resistant
- insulated and breathable thanks to Right Fabric Placement
- flat bonded seams(bonded technology)
- cuff regulation
- 2 front pockets, 1 breast pocket
- 2 small pockets located in the left under-arm area, allowing quick access to lip balms, spectacle cleaning cloths, etc.

Material:

- Stormwall - Power Softshell (woven // 86%PA 14%EA)
- Stormwall - Softshell Chess (woven // 100%PL)

karakorum Softshell Jacket for men

70028/ 2400, 7500, 0900 / Colore: yellow, walnut, black / XS-XXL / 520g

This technical Softshell jacket offers all-weather protection and comfort across a large temperature range. Close-fitting fit and a sporty design.



Insulation layer

The insulation layer keeps the body warm even in extremely cold temperatures. As a result, there's nothing to stop you from skiing to your heart's content whatever the temperature. Insulation layers can include fleeces, or light, highly puffed-out quilted designs with down or padding as filling materials.



3510 winter night

7500 walnut



Eruption Down Jacket

Art. Nr: 70044 / 3510, 7500
Farbe: winter night, walnut / XS-XXL / 540g

Ultra-light down jacket with a very small packing size

Features:

- tight-fitting cut holds the warm down even closer to the body
- extremely hard-wearing
- the coated surface means that water simply trickles off it. At the same time it offers ideal wind protection
- high insulation thanks to the down filling
- elastic cuffs
- 2 front pockets, 2 breast pockets, 1 back pocket
- adjustable hood and waist

Material:

- Surface: 100% Nylon DWR Finish (15 x 15 denier deluxe ripstop)
- Filling: 90/10 grey goose down
- Lining: 100 5 Nylon (50 x 50 denier)



insulation layer



Features:

- 2 front pockets with a warm-up fleece lining; 1 breast pocket
- Lycra trim on the waist and cuffs
- compression pack
- extremely small packing size
- high insulation
- extremely short drying time compared to down or synthetic filling materials

Material:

- Upper surface: Nylon Ripstop (water- and snow-resistant)
- Filling: padding made out of 60g Prima-loft

Gorihorn Padded Jacket

70007/ 2400, 7500, 3110, 0900 / Colore: yellow, walnut, rio, black / XS - XXL / 430g
Primaloft warm-up jacket. Highest-possible thermal capacity in proportion to the total weight of the jacket. Packs away tiny in your pack for ski touring rest stops.



Powerstretch Thermo Layer for men

Art. Nr. 70045/ 3510, 7500, 0900 / Colore: winter night / XS-XXL / 330g

The Powerstretch Thermo Layer keeps skin pleasantly dry, and due to its breathability, is also pleasant to wear.



Features:

- cuffs with thumbholes
- 4-way stretch for a perfect fit
- 1 breast pocket, 1 large back pocket
- high abrasion-strength and wind protection

Material:

Polarlite - "DYNAstretch"



3510 w internight



7500 walnut

0900 black



Features:

- hood, waist and snow guard alteration
- 2 front pockets, 2 breast pockets, 2 inner pockets and 1 sleeve pocket
- elastic Lycra cuffs
- high insulation (tested at minus 45° C)
- laminated external material, water-resistant and windproof

Material:

- 100% PA / PU laminate
- filling: 90/10 grey goose down 400g

Mustagh Ata Down Jacket

70036/ 7500, 3110, 0900 / Colore: walnut, black / XS - XXL / 1100g

Expedition-hardy down jacket equipped with all the important technical details.





hard shell

The Hardshell layer protects SkiTourers and FreeTourers from wind, rain and snow, while at the same time providing enough breathability to enable the sweat that would otherwise cool down the body to be transported to the outside.



3510 winter night 6610 prugna 0900 black



Snowdrift GORETEX® Proshell-Jacke

Art. Nr: 70039/ 3510, 6610, 0900
 Colore: winter night, prugna, black
 XS-XXL / 400g

An all-weather jacket with an ergonomic cut, made out of new GORE TEX® Proshell for unique new possibilities.

Features:

- cuff and waist alteration
- preformed elbows for complete freedom of movement
- PU decoration on the shoulder
- ventilation system for the armpits
- 2 front pockets
- 3-point hood-alteration

Material:

- GORE TEX 3L Proshell Titanium (water column 28.000mm)
- (67% Polyamide/33% PTFE Membrane)





Widderstein Paclite Jacket

Art.Nr: 70072/ 7500, 3520, 0900, 6610 / Colore: walnut, brightnight, black, prugna / 310g
Ultra-light jacket with a sporty and minimalistic look, made out of highly-technical Gore-Tex material for all-weather protection.

Features:

- hood, waist and cuff alteration
- 2 front pockets
- GPS2(GORE Performance Standard 2)-certified, i.e. 100% rain-, snow- and windproof
- preformed elbows for optimal freedom of movement
- extremely small packing size and low weight

Material:

100%PA/ PTFE / 100%PA (Paclite)



7500 walnut 3520 brightnight 6610 prugna 0900 black



Features:

- close-fitting cut above the waist guarantees optimal snow protection
- wide cut on the legs results in freedom of movement and a comfortable fit
- preformed knees and seat
- Softshell insert on the back for wicking and wind-protection
- high water column but still breathable thanks to the use of Gore-Tex materials
- elastic braces with width adjustment
- full-length side opening with a 4-way zipper for variable control and positioning of ventilation
- strengthened hems with robust, cut-resistant material
- inner gaiters

Material:

- Gore-Tex Paclite (water column 28.000mm)
- Gore-Tex Paclite Stretch (water column 28.000mm)
- Gore-Tex XCR 3L (water column 28.000mm)
- Stormwall - Power Softshell (woven // 86%PA 14%EA)
- PVC-coated fabric



0900 black

Mustagh Ata Overpants

Art. Nr: 70026/ 0900 / Colore: black / 44-54 / 760g

Overpants with a dynamic, modern Freerider look. Different materials and comfort offer full freedom of movement. Due to their lightness and innovative new technical details, the overpants are perfectly suited to long climbs as well as downhill descents on powder snow.

Insulation layer



7500 walnut

0900 black

Features:

- elastic trouser-braces for easy removal
- 2 front pockets and a snow guard
- quick-drying material at the waist
- wind-permeable
- elasticity thanks to bi-elastic material inserts
- intelligent Diaplex structure: waterproof, air-permeable and anti-condensation
- preformed knees and seat

Material:

- main material: Diaplex 3-Layer (100%PA/ PU-laminate/PA; water column <20000mm)
- inner material: 3 Layer Stretch (composition: upper surface - 85% nylon / 15% polyurethane; membrane - 100% polyurethane; lining - 100% polyester; water column < 20.000mm)
- waist material: 37% Tactel/ 36% Cordura/ 15% Coolmax / 12% Lycra

Jetstream Overpants

Art. Nr: 70049/ 7500, 0900 / Colore: walnut, black / 44-54 / 620g

Hard-wearing technical 3L overpants with a zip along the entire leg to guarantee an optimal fit and maximum freedom of movement.



women hardshell

Dynafit clothing range for women is also groundbreaking. It includes feminine cuts for improved fits and slimline figures, and the quality of the ultra-thin and especially high insulating multi-layer design in particular comes through strongly.



3510 wint ernight

6610 prugna

0900 black



Snowdrift GORETEX® Proshell-Jacke

Art. Nr: 70039/ 3510, 6610, 0900
Colore: bright night, prugna, black
XS-XXL / 400g

Allweather jacket with ergonomic-
al fitting, made of new Gore-Tex
Proshell for unique new ways....

Features:

Arm- and waistband
preshaped elbows for total freedom of
movement PU-application on shoulder
Applicazioni in PU sulle spalle
Ventilation system under arms
2 front pockets
3-point regulation of the hood

Material:

GORE TEX 3L Proshell Titanium
(Watercolumn 28.000mm)
(67% Polyamide/33% PTFE Membran

first layer



First Layer G2 senza cuciture da donna

Art. Nr: 70048/ 0100, 6610, 7500, 0900
 Colore: snow, prugna, walnut, black
 XS-XL / 160g

First Layer tecnico dal design dinamico.

Caratteristiche:

taglio aderente
 zone traspiranti grazie al Right Fabric Placement
 massimo comfort e libertà di movimento grazie al tessuto bielastico e all'assenza di cuciture

Materiale:

Polipropilene/Poliammide/Elastan



Cool shirt with a loose cut and a "big story" on the reverse. Small logo print on the chest and on the back, as well as an "animal" print on the sleeve.



Longsleeve Gasherbrum for women

Art: Nr: 48184 / Materiale: 90% cotone/10% elasthan / XS-L



Dynafit functional shirt for touring and après-ski. A two-colored design with flat contrasting seams and a logo print on the chest and on the lower hem.

Functional Longsleeve Se7en Summits for women

Art.Nr: 48186 / Materiale: 100% pollesterre, flat seams / XS-L

Piz Bernina Racing Vest for women

Art. Nr: 70064/ 7500, 0100, 0900 / Colore: walnut, snow, black / 34/40-42/48 / 190g

Technical vest with a new sporty look. Functional thanks to Right Fabric Placement and a sporty look thanks to an ergonomic cut.

Features:

1 breast pocket
high water column and non-abrasive in the chest and shoulder areas thanks to the use of 3-layer material
windproof front thanks to the use of Softshell
highly-breathable back on account of a "double-mesh construction"
Lycra trim on the waist and cuffs
intelligent Diaplex structure: waterproof, air-permeable and anti-condensation

Material:

shoulders: Diaplex 3-Layer (100%PA/PU-laminate/PA; water column <20000mm)
body: Softshell light (windproof)
back: "double-mesh construction"
collar insert: 3D-mesh



7500 walnut

0100 snow

0900 black



Features:

1 breast pocket
high water column and non-abrasive in the chest and shoulder areas thanks to the use of 3-layer material
windproof front thanks to the use of Softshell
highly-breathable back on account of a "double-mesh construction"
Lycra trim on the waist and cuffs
intelligent Diaplex structure: waterproof, air-permeable and anti-condensation

Material:

shoulders: Diaplex 3-Layer (100%PA/PU-laminate/PA; water column <20000mm)
body: Softshell light (windproof)
back: "double-mesh construction"
collar insert: 3D-mesh



0100 snow

7500 walnut

0900 black



Racing Jacket for women

Art.Nr: 70031/ 7500, 0100, 0900/ Colore: walnut, snow, black / 34/40-42/48 / 270g

Technical jacket with a sporty look. Functional thanks to Right Fabric Placement and a sporty look thanks to an ergonomic cut.



soft shell



Features:

- windproof and water-resistant
- insulated and breathable thanks to Right Fabric Placement
- flat bonded seams (bonded technology)
- waist adjustment
- 2 front pockets, 1 breast pocket
- 2 small pockets located in the left underarm area allowing quick access to lipsticks and spectacle cleaning cloths, etc.

Material:

- Stormwall - Power Softshell (woven // 86%PA 14%EA)
- Stormwall - Softshell Chess (woven // 100%PL)

White Peak

Softshell Jacket for women

Art. Nr: 70029/ 6500, 0100, 0900 / Colore: raspberry, snow, black / 34/40-42/48 / 480g
This technical Softshell jacket offers all-weather protection and comfort across a large temperature range. Close-fitting fit and a sporty design.



Four Elements Softshell Jacket for women

Art.Nr: 70041/ 3110, 0900 / Colore: rio, black / 34/40-42/48 / 420g

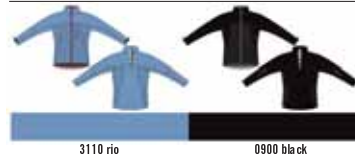
This technical jacket offers maximum climate adjustment and all-weather protection in wide-ranging temperatures

Features:

- extremely hard-wearing
- adjustable hem
- 1 breast pocket, 2 underarm pockets
- the new movement-based ventilation system transports sweat even faster to the outside.
- a Durastretch insert guarantees high comfort, a perfect fit and freedom of movement
- perfect insulation thanks to Primaloft filling

Material:

- main material: Power Softshell, DWR finished woven (face: 88% PES + 12% PU / backing: 100% PES fleece)
- front material: DWR Ripstop (100% Nylon)
- front padding: Primaloft ONE (60g filling)
- side and back material: Durastretch Lightweight (37% Tactel/ 36% Cordura / 15% Coolmax/ 12% Lycra)



Features:

- wind-resistant
- enormous breathing activity thanks to "Schoeller Helium"
- warm-air storage insulation using chambers inside the material
- a great deal of freedom of movement thanks to the use of bi-elastic "Schoeller-Helium"
- preformed and non-abrasive knees
- removable Softshell snow guard at the waist with side alteration
- semi-elastic waistband with belt
- generous side ventilation with inner pockets
- hem width alteration

Material:

- main material: Schoeller Helium (15% PU // 30% EL // 55% PA) 3XDRY
- snow guard and knee inserts: Stormwall - Softshell Chess (woven // 100%PL)
- material insert in the lower leg area: waterproof 3-layer fabric and ski edge-/crampon-proof Schoeller Keptotec.

Pamir Touring Pants for women

Art.Nr: 70031/ 0900, 6500 / Colore: black, raspberry / 34/40-42/48 / 610g

Ski touring pants with a modern look and advanced technical specifications. Outstanding comfort thanks to the combination of different materials, and a cut specially designed to reflect movement ergonomics.



Insulation layer



6500 as pbony 7500 walnut 0900 black



Power Stretch Thermolayer Damen

Art. Nr: 70046 / 7500
Colore: walnut / XS-XL / 310g

Lo strato termico in Powerstretch mantiene la pelle asciutta e il materiale traspirante è piacevole da indossare.

Caratteristiche:

vestibilità perfetta grazie alle maniche con le aperture per i pollici
"4-way stretch" per adattarsi perfettamente al corpo
1 tasca pettorale, 1 capiente tasca posteriore
elevata resistenza alle abrasioni e protezione antivento

Materiale:

Polarlite - „DYNASTretch“



3110 rio

7500 walnut



Snowleopard Cap

Art.Nr: 70080/3110, 3510, 7500
Colours: rio, winter night, walnut
Sizes: S,L

3510 winter night

7500 walnut



Hand Knit Ear Hood

Art.Nr: 70083/3510,7500,6610
s: winter night, walnut, prugna
Sizes: uni

7500 walnut



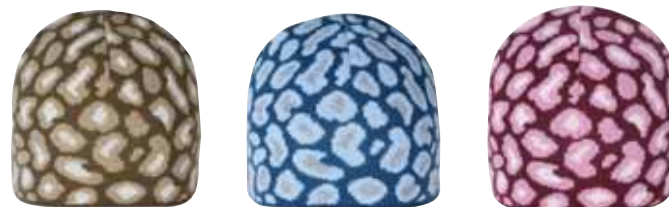
Racing Cap

Art.Nr: 70081/3110,7500,0900
Colours: rio, walnut, black
Sizes: uni

7500 walnut

3520 bright night

6610 prugna



Leopard Knit Hood

Art.Nr: 70082/7500,3520,6610
Colours: walnut, bright night, plum
Sizes: uni

6610 prugna

7500 walnut



Gasherbrum Cap

Art.Nr: 48187/7500,6610
Colours: walnut, prugna
Sizes: uni

7500 walnut

3510 winter night

6610 prugna



Hand Knit Stripe Beanie

Art.Nr: 48188/3510, 7500, 6610
Colours: winter night, walnut, prugna
Sizes: Uni



caps



ST-100% Carbon Gasherbrum II

48176/9070 / black/silver/orange

bastoncino duepezzo in 100% carbonio

Length: uni
Weight: 180g
- ultra-light 2-part telescopic pole made out of 100% carbon
- foam grip with a Neoprene loop
- winter basket as well as a vario-flex wolfram tip

FT-Professional Carbon-Titanal Se7en Summits

48033/9210 / brown/white

Very light 2-part telescopic pole made out of carbon/aluminium

Pack size: 115cm; maximum length: 150cm
Length: uni
Weight: 240g
upper part made out of Titanal, lower part 100% carbon
contour full-foam grip with a wide Neoprene comfort loop
integrated grip zone
Power-Lock locking system
winter basket as well as a vario-wolfram/carbide flex tip

ST-Professional Carbon-Titanal Women

48050/ 9924 / white/ silver/ bluegrey

Very light 2-part telescopic pole made out of carbon/aluminium

Packing size 95cm, maximum length 150cm
Weight: 210g
upper part made out of aluminium, lower part 100% carbon
contour full-foam grip with a shape especially designed for women
wide Neoprene comfort loop
integrated grip zone
Power-Lock locking system
winter basket as well as a vario-wolfram/carbide flex tip

ST-Progrip Titanal

48034/9230 / red/white/grey

Leggero bastoncino telescopico a due sezioni in titanal resistente

Ingombro minimo: 74cm
Lunghezza massima 140cm
Peso: 240g
sezione superiore e inferiore in titanal
impugnatura in foam con zona di presa termica integrata
cinghia extralarga
rotelle invernali Vario e punte in Wolfram Carbide

SR-Race Carbon

48177/9180 / black/orange

il bastoncino più leggero della collezione Dynafit con tubolare in carbonio 9mm e carico di rottura di 80kg

the lightest Dynafit pole, with a 9mm carbon tube and 80 kg breaking load
Lengths: 130 - 135 - 140 - 145 - 150
Weight: 180g
XC foam grip with a biathlon loop
Cross-country basket with a wolfram-carbide tip



Powerful right up to the summit.

50% of the downward pressure comes from pole use.

FreeTourers, SkiTourers and SkiRunners push themselves to the summit, with almost as much strength coming from the legs as it does from the arms. It is this strength that is transmitted via the poles. Dynafit ski poles are not only lighter but also convert pole energy into dynamic thrust. The demands made on the FreeTouring poles in particular are wide-ranging in nature. FreeTourers want to get to the summit quickly, but for this they require more than anything an inseparable arm-hand-pole unit for extreme manoeuvres. Dynafit athletes and engineers have left nothing to chance: basket geometry; conicity; bending behaviour; grip ergonomics; loop form; and adjustability. For each requirement there exists just the right pole offering maximum speed, a high degree of comfort, or both.

Multifunctional FreeTouring telescopic poles and the lightest Titanal racing poles around - Dynafit offers them, and is therefore setting the standard.

FT-Freetouring Carbon-Titanal

48159/9033 / silver/red/anthrazit

Bastoncino telescopico a due sezioni, ultraleggero, in carbonio/titanal

Weight: 275g

Ultra-light 2-part telescopic pole

made out of carbon/Titanal

Adjustable from 115 to 150cm

Upper part made out of Titanal,

lower part 100% carbon

FreeRide grip with a Neoprene

loop

Vario winter basket

Vario wolfram/carbide flex tip

SR-Race Titanal

48036/9731 / silver/grey

An ultra-light and stable racing pole made out of 16mm Titanal, and the first choice of the international DYNAFIT racing team

Lengths: 120-125-130-135-140-

145-150

Weight: 225g

Neoprene loop

cross-country basket

vario flex wolfram/carbide tip

Dynafit Speed Skins

Dynafit Speed Skins - now even faster and tougher

Snow between the ski and the skin: at last there is an end to the SkiTourer's nightmare. Moreover, Dynafit's new Speed Skins are set to revolutionize skin fitting. Changing skins now takes just seconds, and the skins, once in place, are 100% secure. The new skin clip ensures optimal contact between it and the skin, and allows easy replacement of both. This delivers the result that SkiTouring novices, FreeTourers and SkiRunning athletes have always wanted: improved performance; more convenience; and maximum safety.

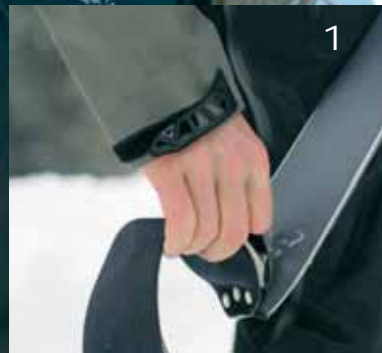
And this is how it works:

Going uphill - tightening the skins:

1. Hang the skin endhook onto the tip of the ski
2. Bond the skin so that it is flush with the inner edges of the ski.
3. Attach the Speed Skin rubber clamp onto the tip of the ski
4. Done

Going downhill - removing the skins:

1. Remove the skin from the ski, starting from the ski tip.
2. Place the bonding surfaces of skins flush onto each other.
3. Fold up the skins
4. Done





Regular Skinfix

48052/ 0009 black uni

Endhook

48073/ 0031 silver uni

Skin glue 100ml

48053/ 0098 unica uni

Skin Sealing 125ml

48075/ 0999 unica uni

Skin cutter

48054/ 0098 unica uni

Speedskin Fix

Art. Nr. 47999/0009

Colour: black

Weight: 14g

Sizes: uni

The new "Speedskin Fix" rubber clamp ensures that skins are securely fixed to skis. It weighs just 14g (the lightest clamp in the world), making it the top choice for athletes and SkiTouring enthusiasts everywhere for whom every gram of weight counts. Because of its straightforward operation (skins can be removed without stepping out of the binding) and its scuff-proof fit, it is ideal for use in races with bunched starts, and enables extremely fast transitions between uphill and downhill. Compatible with all Dynafit skis (from Winter 06-07).

Skin Tip

Art. Nr. 48164/ 0999

Der Kunststoffclip ermöglicht den problemlosen Austausch des Speedskin Fix. Speedskin Fix und Skin Tip bilden eine Einheit!

Speedskin Race Ready

Art. Nr. 48025/ 9042

Colour: ice blue

Weight: 310 g (160-cm-long pair plus clamp)

Sizes: 150 cm x 60 mm with Speedskin Fix clamp

160 cm x 60 mm with Speedskin Fix clamp

170 cm x 60 mm with Speedskin Fix clamp

The ultra-light, fast "Speedskin" is ideal for racing use or for touring enthusiasts who demand the best gliding and climbing characteristics.

Thanks to the use of special high-tech materials, the weight of this new racing skin is 15-25% lower than conventional ski touring skins! In combination with the "Speedskin Fix" clamp, it is not only fast and light, but also simple to fix and quick to remove. The skin prevents moisture being sucked up in wet snow conditions. The dense and especially short-haired floor made of 100% mohair provides sensational gliding characteristics, and the racing skin also boasts excellent bonding characteristics.

Speedskin ST Skin Ready

Art. Nr. 48173/9042 Gasherbrum, 48088/ 9042 ST 7.0, 48160/ 9042 ST 5.0 W
48089/ 9042 ST 4.0, 48068/ 9042 ST 3.0, 48069/ 9042 ST 1.0

Colour: ice blue

Sizes: For all ST-series DYNAFIT models

This 100% mohair skin combines good gliding with excellent climbing properties and is therefore ideal for all snow types and uses. Used in combination with the "Speedskin Fix" clamp and endhook, it is easily fixed and can be removed just as quickly. The skins are cut to fit Dynafit ST skis with various waists, and therefore guarantee perfect functioning and retention, even in adverse conditions.

Speedskin FT Skin Ready

Art. Nr. 48174/9042 Se7en Summits, 48161/ 9042 FT 10.0 und Mustagh Ata
48090/ 9042 FT 7.0, 48072/ 9042 FT 6.0

Colour: ice blue

Weight: 25% weight-saving compared to traditional skins

Sizes: For all FT-series DYNAFIT models

This 100% mohair skin combines good gliding with excellent climbing properties and is therefore ideal for all snow types and uses. Used in combination with the "Speedskin Fix" clamp and endhook, it is easily fixed and can be removed just as quickly. The skins are cut to fit Dynafit FT skis with various waists, and therefore guarantee perfect functioning and retention, even in adverse conditions.



Scape Glove

Art.Nr.: 43317/ 9711 / Colour: black/ yellow / Sizes: S-XL / Weight: 65g

Specially adapted to meet the needs of endurance athletes, especially cross-country skiers and ski touring enthusiasts, the Scape Glove's spiral cut ensures a perfect fit. Made from highly breathable Schoeller Softshell material, it also features silicon gel pads for knuckle and wrist protection. Ideal for spring and autumn tours or fast endurance sports.
Material: Schoeller Extrem/synthetic velour/silicon gel.



Racing Comp

Art.Nr: 48047/ 0009 / Colour: black / Sizes: S-XL / Weight: 24 g

The close, short cut of this glove appeals equally to ambitious sporting SkiTouring fans and competitive SkiTourers. The back of the glove incorporates Schoeller Dryskin, with kid leather used on the palm. The product stands out because of its good warming properties and hardwearing, durable palm. The model appeals equally to demanding SkiTourers, FreeRiders and SkiRunners..



Racing Shell

Art.Nr: 48045/ 9719 / Colour: black/silver / Sizes: S-XL / Weight: 75g

A long cuff that can be closed using just one hand, an XCR Gore-Tex lining and a super-warm PRIMALOFT filling make this glove suitable for an extremely wide range of uses. The back of the glove features highly breathable Ripflex nylon, with extremely supple, non-slip kid leather used on the palm. The Racing Shell can be used as an overglove for our Race Comp & Pro models and is also a perfect SkiTouring glove. The model appeals equally to demanding SkiTourers, FreeRiders and SkiRunners.



Ultra Softshell

Art.Nr: 48048/ 9719 / Colour: black/ silver / Sizes: S-XL / Weight: 60 g

The anatomical cut and long cuff, combined with the use of Schoeller Dryskin and an extremely breathable micro fleece filling make this model a general-purpose glove for sport-oriented SkiTourers. This model too features exclusive kid leather on the palm.
Offering great comfort, workmanship and the very best materials, it will no doubt appeal to all demanding sport-oriented SkiTourers.



Breathable uphill. Warm downhill.

Dynafit succeeds in reconciling the "irreconcilable".

It sounds like a dream: "No more sweating on the way up. No more freezing on the way down". Material researchers and Dynafit designers have managed to satisfy hitherto irreconcilable wishes. The secret: Just a little material - but of the finest quality. Initially developed in the laboratory, the gloves were then tested on Mustagh Ata and in SkiRunning competitions. They can be combined with overgloves in extreme conditions. Surprise your customers with Dynafit's glove range!

This new generation of gloves is based on engineering science and leaves nothing to be desired. Light. Actively breathable. Wind repellent. Warm. Get a grip!





Dynafit technology for your safety

Race Helm SR Race Pro

Art. Nr. 48041/ 9731 / Colour: grey/ titan / Weight: 310 Gramm
Sizes: uni (51-61 cm head circumference)

A helmet specially designed for competitive SkiTourers. For the very first time, a model that includes all the main features demanded by this new sport:

- The entire circumference of the head is ventilated by means of frontal air inlets, cooling it even at low speeds
- Upwards-opening ventilation slits prevent heat build-up when the athlete is not moving
- Lowest-possible weight combined with maximum safety (310 g with earmuffs)
- Clip attachment for all commercially available helmet lamps
- Integral, removable earmuffs for use on cold, windy days.
- Compatible with the visor available as an accessory
- Rotary knob allows extremely easy adjustment to fit all head sizes
- Meets all common standards: EN 12492 Mountaineering, EN 1078 Motorcycling and cycling, ASTM F2040-02 Skiing and snowboarding

Downhill Tour Helm FT Pro

Art.Nr. 48042/ 9712 + 9762 / Colour: black/ carbon + silver/flare / Weight: 340 Gramm
Sizes: unica (circonferenza testa 51-61 cm)

Helmet specially designed for SkiTouring and FreeTouring. For the very first time, this model includes all the main features demanded by the various types of SkiTouring:

- The entire circumference of the head is ventilated by means of frontal air inlets, cooling it even at low speeds. The ventilation slits can be closed by fitting inserts when not required for downhill use.
- Upwards-opening ventilation slits prevent heat build-up when athlete is not moving
- Clip attachment for all commercially available helmet lamps/goggles
- Integral, removable semi-hard ear pads for additional protection
- Compatible with the visor available as an accessory
- Rotary knob allows extremely easy adjustment to fit all head sizes
- Lowest-possible weight combined with maximum safety (340 g with ear pads)
- Meets all common standards: EN 12492 Mountaineering, EN 1078 Motorcycling and cycling, ASTM F2040-02 Skiing and snowboarding

Helmet Visor

Art.Nr. 48051/ 9135 / Colour: red / Weight: 40 grammi (cerniere adesive incluse) / Sizes: unica

A detachable visor made out of unbreakable polycarbonate suitable for use with both our helmets. The bonded-on hinges are attached to mounts on both sides of the helmet shell, and the visor is secured by pressing a button. The fine adjustment pitch allows easy adjustment and fixes the visor in the preset position. The soft integral nose pad gives a comfy fit and protects against injury in the event of a fall. The red tint improves contrast when in shadow, thus allowing easier detection of obstacles.

FT 18

Colour: black/grey + walnut/black
Volume: 18l
Dimensions: 52x28x16cm
Weight: 850g

Material:
420D Nylon + 210D R/S Nylon - PU coated
Diagonal ski attachment, alterable for various ski widths
Ice axe holder
Avalanche-shovel holder on front
Quick access to the avalanche probe and shovel handle from the outside via separate compartments
Detachable ski holder on shoulder strap
Integral emergency whistle in the chest belt
Highly breathable shoulder straps
Fully-ventilated back system
Adjustable, removable aluminium frame for a better fit and protection
Interior: separate compartment for valuables with a zip fastener, and a compartment for a drinking bladder



RACE Mustagh Ata

Art.Nr: 48096/ 9719
Colour: red
Volume: 15l
Weight: 500g

Material:
210D Nylon RS+ 150D Nylon Diamond RS, TPU coated
new technology: bonded material mix (seamless) on front part
coated outer material > extremely water repellent
side access to the main compartment thanks to a zip fastener, plus a small zip-ped pocket on the front
central ski attachment allows skis to be attached diagonally on the back
additional ice axe holder
fully-ventilated shoulder straps
detachable, insulated drinking bottle holder
padded air-mesh back



FT 28

Art.Nr: 48094/ 9230 + 9250
Colour: black/grey + walnut/grey
Dimensions: 55x28x23cm
Weight: 930g
Volume: 28l

Material:
420D Nylon + 210D R/S Nylon - PU coated
Central and side ski attachment loops
Ice axe holder
Avalanche-shovel holder on front
Avalanche probe/shovel component pocket accessible from the outside
Main compartment can also be accessed from the back
Integral emergency whistle in the chest belt
Highly breathable shoulder straps
Fully-ventilated back system
Adjustable, removable aluminium frame for a better fit and protection
Interior: separate compartment for valuables with a zip fastener, and a compartment for a drinking bladder



FT 28 W

Art.Nr: 48095/ 9135
Colour: silver/berry/ medium grey
Dimensions: 55x28x23cm
Weight: 930g
Volume: 28l

Material:
420D full dull Nylon + 210D Diamond R/S Nylon Hypalon - PU coated
Central and side ski attachment loops
Ice axe holder
Avalanche-shovel holder on front
Internal avalanche probe compartment
Main compartment can also be accessed from the back
Integral emergency whistle in the chest belt
Highly breathable shoulder straps
Fully-ventilated back system
Adjustable, removable aluminium frame for a better fit and protection
Interior: separate compartment for valuables with a zip fastener, and a compartment for a drinking bladder





RC 20

Art.Nr: 48040/ 9110
Colour: black/silver
Volume: 18l
Dimensions: 52x28x16cm
Weight: 430g (without bottle holder and snow claw)

Material:
210D nylon RS

The UIAA-approved "Snowclaw" shovel is integrated into the rucksack and is simultaneously a "safety box" for holding crampons (with side access even when wearing the rucksack)

Diagonal ski attachment loop, alterable for various ski widths

Integrated emergency whistle, removable bottle holder on the chest belt

Fully breathable shoulder straps

Anatomically-fitting air-mesh back contact system



Perfect harmony between man and material.

Real „Backpack values“ show up in interaction with ski and equipment. “Can you imagine to take off your skis within 5 seconds during a skitour and to store them on your backpack?” We could neither, but the Dynafit development team and the athletes have demonstrated it impressively. Even more: The great choice of intelligent fixation systems do not leave any expectations open. Ski fixation, ice axe, speedski, drinks, food – everything has its place. And most of these fixations are very easy and directly on the back to handle

Exactly adapted to the movements of FreeTourer, SkiRunner and SkiTourer. There is nothing comparable.



backpacks

ST 25



Art.Nr: 48039/ 9711 + 9712
Colour: silver/flame/black + med grey/yel-
low/black
Volume: 25 l
Dimensions: 56-25-15 cm
Weight: 900 g

Material:
420D full dull Nylon + 210D Diamond R/S
Nylon - PU coated
Anatomical construction
Air-mesh back with ventilation ducts
Adjustable plastic plate for reinforced
back (removable)
Compatible with drinking bladder
Central ski attachment, two ice axe
holders, side compression straps, internal
shovel compartment, internal pocket for
drinking bladder
Padded shoulder straps, anatomically
shaped, fully-breathable, chest strap
Fully-ventilated hip fins with zip-fastener
pockets and loops
Zipped compartment pocket with a mesh
inner pocket for valuables.
Removable elastic cord around the top
compartment
Two side net pockets, net pockets on the
shoulder straps to store energy bars

ST 32



Art.Nr. 48038/ 9711 + 9712
Colour: silver/flame/black + med grey/yel-
low/black
Volume: 32 l
Dimensions: 58-27-16 cm
Weight: 970 g

Material:
420D full dull Nylon + 210D Diamond R/S
Nylon - PU coated
Anatomical construction
Air-mesh back with ventilation ducts
Adjustable plastic plate for reinforced
back (removable).
Compatible with drinking bladder
Central ski attachment, two ice axe
holders, side compression straps, internal
shovel compartment, internal pocket for
drinking bladder
Padded shoulder straps, anatomically
shaped, fully-breathable, chest strap
Fully-ventilated hip fins with zip-fastener
pockets and loops
Lid pocket with a central clasp including
an inner net compartment for valuables.
Removable elastic cord around top com-
partment
Two side net pockets, net pockets on the
shoulder straps to store energy bars

ST 32 W



Art.Nr: 48097/ 9714
Colour: berry/silver/anthracite
Volume: 32 l
Dimensions: 58-27-16 cm
Weight: 900 g

Material:
420D full dull Nylon + 210D Diamond R/S
Nylon - PU coated
Anatomical construction
Air-mesh back with ventilation ducts
Adjustable plastic plate for reinforced
back (removable).
Compatible with drinking bladder
Central ski attachment, two ice axe
holders, side compression straps, internal
shovel compartment, internal pocket for
drinking bladder
Padded shoulder straps, anatomically
shaped, fully-breathable, chest strap
Fully-ventilated hip fins with zip-fastener
pockets and loops
Lid pocket with a central clasp including
an inner net compartment for valuables.
Removable elastic cord around the top
compartment
Two side net pockets, net pockets on the
shoulder straps to store energy bars





Carbon Megalight shovel

Art. Nr. 48043/ 9729 / Colour: black carbon / Weight: 400 g

Ultra-light hand-made shovel, 100% carbon. By using an aerospace composite, we have been able to produce an extremely light but nevertheless solid shovel that sets new standards in terms of weight. This is the first carbon shovel to make no compromise between weight and functionality. It has a telescopic shank and a deep-drawn shovel blade for extra efficiency in rescue situations, and is extremely light thanks its high-tech materials. A must-have item for athletes and SkiTouring enthusiasts for whom every gram of weight counts.



Titanal Ultrastrong shovel

Art. Nr. 48044/ 9180 / Colour: aluminium/black / Weight: 620 g / Shaft length: 48 cm

A shovel made of high-strength Titanal. A deep, high shovel blade makes it possible to move a large amount of snow in a short time. An aluminium shovel shank and a T-handle for more effective, efficient shovelling. Its compact shape means that it takes up little space in a rucksack and makes the shovel the ideal companion on any trip.



Speed shovel

Art.Nr. 48158/ 0999 / Weight: 490 g / Colour: translucent grey

An extremely light and durable shovel made of high-quality polycarbonate. Shock tested at - 40 °C, the shovel's especially deep-drawn blade saves precious time in rescue situations - and therefore lives! Extendible telescopic handle with markings to help find locking points quickly and easily.

Material: PC shovel blade; aluminium shank



TLT superlite step-in crampon

Art. Nr. 43019/ 0870, Weight: 300 g / Colour: orange / Standard size suitable for 36-46

Twelve-serration lightweight Alunal crampon with a special rocker lever and front stirrup. Suitable for all Dynafit boots and other models. Length can be adjusted without a tool.



TLT Superlite ice pick

Art. Nr. 43018/ 0870, 50 cm / Colour: orange / Weight: 340 g

A light Alunal axe with extremely durable forged inserts. Perfect for competitions and expeditions, where every gram of weight counts.

Essential accessories

Dynafit would not be Dynafit if it did not devote the same painstaking attention to its accessories as it does to its other products, such as skis, boots and bindings. At the end of the day it is accessories that separate the wheat from the chaff. The overriding safety principle when it comes to crampons, avalanche shovels and beacons is that functional safety needs to be combined with durability.

Experience shows that SkiTourers, FreeTourers and SkiRunners will only use safety accessories if they are light enough to ensure that their weight does not spoil the ski touring experience. We are especially proud of the way in which we have managed to strike a balance between weight and strength in these product lines.

Emphasise your selling points by using Dynafit Dealer Tools



Sonda da valanga 260 cm

Art.Nr: 43020/ 0870 / Colori: unica / 240g



Thermoflex Oven

Art.Nr: 48162/ 0999 / anthrazit, unica

Adapts any Thermoflex boot liner to fit any foot. Gently warm the liner in the oven for 10-15 minutes according to the instructions, slip into the boot, and allow to cool - done!



Demo Board

Demo Board 43207/ 0098 (Speed, Comfort), 999 (Vertical)

The binding demo board can be used to present your bindings in-store to maximum effect. It also allows bindings to be placed on every ski for demonstration purposes.

Each board is supplied with a set of stickers so that the mounted binding can be labelled immediately.



Mounting Device/ Mounting Gauge

43226/ 0098 Misura S und L

For quick and correct mounting of your Dynafit bindings. Can be used with the Speed, Vertical ST/FT, Rental and Comfort bindings.

Mounting Device Race Ti/Speed lite/ Low Tech 48178/0098
Mounting Device Vertical Race Ti 48179/0098

Free Touring



FT Se/en Summits, 48111/9210



FT Mustagh Ata, 48081/0010



FT 10.0 Carbon, 48099/9792



FT 10.0 Carbon, 48099/9792



FT 7.0, 48083/9220



FT 10.0 Women, 48082/9135



FT-Professional Carbon-Titanal Se/en Summits, 48033/9210



FT-Freetouring Carbon-Titanal 48159/9033



TLT Vertical FT
48154/9173, 48155/ 9173

Ski Touring



ST Gasherbrum II, 48172/9070



ST 7.0, 48084/9730



ST 4.0 N, 48085/9070



ST 3.0, 48008/9230



ST-100% Carbon Gasherbrum II
48032/9051



ST-Professional Women
Carbon-Titanal, 48050/9924



ST-Progress Titanal
48034/9778



ST 1.0, 48009/91390



TLT Comfort Rental
48076/9779



TLT Vertical ST
48153/9779

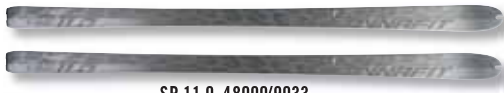


TLT Comfort
48021/9130

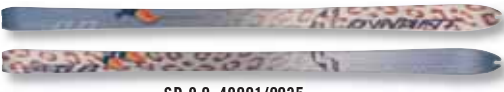


ST 5.0 Women, 48098/9924

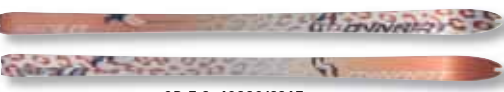
Ski Running



SR 11.0, 48000/9033



SR 8.0, 48001/9035



SR 7.0, 48002/9047



SR-Race Titanal
48036/9731



SR-Race Carbon
48177/9180



TLT Vertical Race Ti
48150/9172



TLT Speed,
48023/9170



Low Tech Race
48175/9130



TLT Speed Lite
48099/9170





Zzero4 C-MF/C-TF
61027/5130, 61017/5130



Zzero4 PX-TF
61037/2400



Zzero High MF
48168/0999



FT 18, 48093/9210 + 9220



Downhill Tour Helmet FT Pro
48042/9712 + 9762



Zzero4 U-MF
61047/1600



Zzero High TF
48169/0999



Racing Shell
48045/9719



FT 28, 48094/9230 + 9250



FT 28W, 48095/9135



Speedskin FT Skin Ready
48174/9042 Seten Summits, 48161/ 9042 FT 10.0 und
Mustagh Ata, 48090/ 9042 FT 7.0, 48072/ 9042 FT 6.0



Zzero3 C-TF
61057/5130



Zzero Mid MF
48167/0999



Ultra Softshell
48048/9719



ST 25, 48039/9711 + 9712



Visor Helmet
48051/9135



Zzero3 PX-MF/PX-TF
61067/4510, 61077/4510



Zzeor Mid TF
48169/0999



Scape Glove
43317/9711



ST 32, 48038/9711 + 9712



ST 32W
48097/9714



Speedskin ST Skin Ready
48173/9042 Gasherbrum, 48088/ 9042 ST 7.0
48160/ 9042 ST 5.0 W, 48089/ 9042 ST 4.0
48068/ 9042 ST 3.0, 48069/ 9042 ST 1.0



Zzero2 C-TF
61087/3790



ILI 4 Race Pro TF
48016/9722



ILI 4 lite TF
48019/9718



Liner TLT 4 TF
48166/0999



Racing Comp
48047/0009



RC 20
48040/9110



Race Helmet
48041/9731



ILI 4 Evo TF
48017/9722



ILI 4 Evo MF
48018/9722



Liner TLT 4 MF
48165/0999



RC 20
48096/9719



Speedskin Race Ready, 48025/9042



Mustagh Ata Jacket
70036/7500,0900



Gonnorn Padded Jacket
70007/0900,7500,2400,3110



Wanderstein Racite Jacket
70072/7500,3520,0900,6610



Lappon Jacket
70044/3110,6610,0900



Power Stretch Thermo Layer
70045/3510



Underwear Windblock Shirt
Man 870057 / Women 870060



Ski Finder Leash
48121/00100



Mustagh Ata Pant
70026/0900,7500



Light Shell Jacket
70027/0900



Sottshell Jacket Men
70028/2400,7500,0900



Snowmitt 6ix Prosnei Jacket
70039/3520, 6610, 0900



Pamir Touringpant Men
70030/0900



Underwear Seamless Shirt
Man 870067 / Women 870069



Crampons 78 + 88mm
46601/0099 + 0098



Jetstream Pant
70049/0900,7500



Longsleeve Gasherbrum II Men
48183



Longsleeve Se7en Summits Men
48185



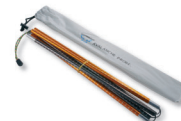
First Layer Men Gasherbrum II
70047/2400,3510,7500,0900



Earthquake Jacket Men
70042/2400, 3110,0900



Underwear 3/4 Pant
Man 870058 / Women 870061



Avalanche Probe 260cm
43020/0870



Four Elements Jacket Men
70040/7500,0900



Four Elements Jacket Lady
70041/3110,0900



Sottshell Jacket Lady
70029/6500, 0100,0900



Pamir Touringpant Lady
70031/090,650



Power Stretch Thermo Layer
70046/7500



Underwear Short
Man 870059 / Women 870062



Ice Axe TLT Superlite
43018/0870



Avalanche Racing Suit
70052/3510,6610,7500,0900



Race Jacket Men
70065/7500,0000,0900



Race Jacket Lady
70031/090,650



Piz Palu Race Vest Men
70063/7500,0000,0900



Longsleeve Gasherbrum II Lady
48184



Carbon Shovel Megalight
48043/ 9729



Crampon TLT
Superlite step-in
43019/0870



Randonee Hex Pant
70021/750,090,650



First Layer Lady Gasherbrum II
70048/ 0100,6610,7500,0900



Piz Bernina Race Vest Lady
70064/ 7501,0101,0901



Longsleeve Se7en Summits Lady
48186



Titan Shovel Ultrastrong
48044/ 9180



Speed Shovel
48158/0999

Dynafit Austria
+43 662 45127014
info@dynafit.at

Dynafit France
+33 476 525959
info.fr@salewa.com

Dynafit Germany
+49 89 90993180
info@dynafit.de

International
+39 0471 242650
international@salewa.com

Dynafit Italy
+ 39 0471 242600
info@dynafit.it

North America
info.an@dynafit.de

Dynafit Spain
+34 93 7205262
office.spain@salewa.com

Dynafit Switzerland
+41 71 3350930
info@salewa.ch



THANKS TO:

Beni, Basti, Luis and Javier for their successful mission and the nice pictures from Gasherbrum II, Martin and Olof for their Everest as well as Mount Vinson expedition to complete their Se7en Summit challenge, Martina and Octavio for their big skiing at Cho Oyo. As well to our athletes from all nations to accomplish missions like the alp crossing and many other projects. Thanks to all the athletes for their fantastic input into the whole product research and development process and for many nice days together in the snow. Thomas, Claudia, Alexandra, Verena, Kai and the whole Apparel team for the big step forward, Fritz, Edwin and the binding task force for high quality products, Antonio, "Super"-Mario, Piero, Federico and the footwear division for short, mid and long term projects, Wolfgang L., Manfred, Tom B., Ferd', Stefan and Bernhard, Helmut, H., and Walter, Martin and Harry F, Arno S. and the whole Ski development team for realizing difficult tasks into the real best skis, as well as Ulli S., Udo G., Hendrik, Christian, Sebastian S. and Ulli H. for their unbelievable motivation and power to solve problem and to create success, also thanks to the engineers and designers to bring the right things on the right place. Finally thanks to the whole sales force to take care for our clients, having the right products at the right place and to develop the market carefully.

Moreover thank you very much to Reinhard, Bernhard, Herwig, Martina and Susi for night shifts, the realisation of 100,0% targets and not giving up at 99,0 %. Last but not least thank you very much to Heiner and Massimo for joining visions and ideas and for the cooperation as well for the confidence to realize the whole project.

Reiner Gerstner

"Our mission inspire our dreams and motivate our actions to ski, travel and realize new possibilities.....always looking forward what the future has on store!"

SPEED UP

We reserve the right to introduce without any prior notice, modifications for improving the quality and the product performance. Pictures: Xandi Kreuzeder, Maximilian Mutzhas.
Concept and Text: www.Pascher-Heinz.com, Graphic Design: Graph.Halun

DYNAFIT



www.dynafit.de