



**ATOMIC**

**WE  
ARE  
SKIING**

**WINTER 2013  
FIS ALPINE**

# WORLD CUP APPROVED



## DOWNHILL REDSTER FIS DOUBLEDECK DH

MODEL	ART. NO.	SIZE	RADIUS	DOUBLEDECK / PLATE	BINDING	FIS RULE
REDSTER FIS D2 DH M	AA0024456	218 cm	50 m	D2 New	X Binding	New 12/13
REDSTER FIS D2 DH W	AA0024458	213 cm	50 m	D2 New	X Binding	New 12/13



## SUPER G REDSTER FIS DOUBLEDECK SG

MODEL	ART. NO.	SIZE	RADIUS	DOUBLEDECK / PLATE	BINDING	FIS RULE
REDSTER FIS D2 SG M	AA0024490	210 cm	45 m	D2 New	X Binding	New 12/13
REDSTER FIS D2 SG W	AA0024488	205 cm	40 m	D2 New	X Binding	New 12/13



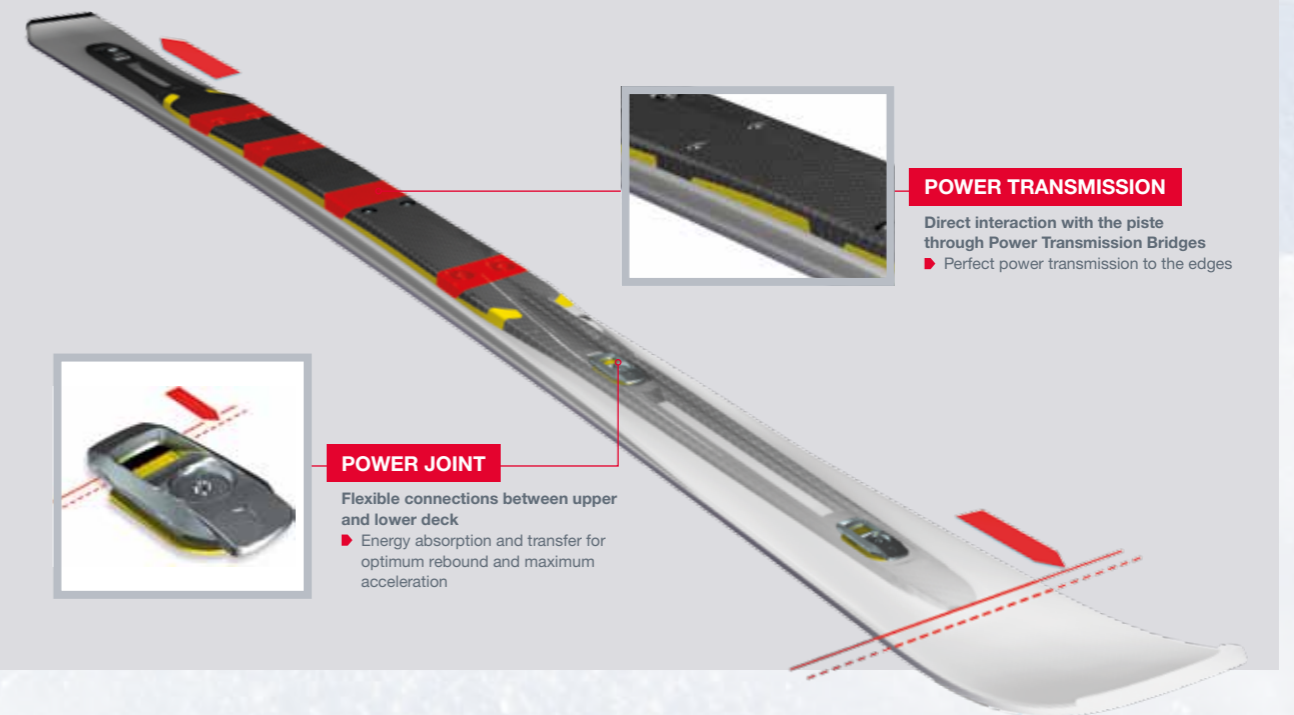
## GIANT SLALOM REDSTER FIS DOUBLEDECK GS

MODEL	ART. NO.	SIZE	RADIUS	DOUBLEDECK / PLATE	BINDING	FIS RULE
REDSTER FIS D2 GS M	AA0024462	195 cm	35 m	D2 New	X Binding	New 12/13
REDSTER FIS D2 GS	AA0024472	191 cm	27 m	D2 New	X Binding	
REDSTER FIS D2 GS W	AA0024464	188 cm	30 m	D2 New	X Binding	New 12/13
REDSTER FIS D2 GS	AA0024460	183 cm	23 m	D2 New	X Binding	

## REDSTER DOUBLEDECK

### THE NEXT GENERATION OF THE SERIAL WINNER!

The completely redesigned upper deck is what gives the Redster its character. It makes radical carving turns even easier without compromising on edge grip or performance. Skiing with the new Redster Doubledeck is even more precise and yet so much more effortless.



### POWER TRANSMISSION

Direct interaction with the piste through Power Transmission Bridges  
 Perfect power transmission to the edges

### POWER JOINT

Flexible connections between upper and lower deck  
 Energy absorption and transfer for optimum rebound and maximum acceleration



## SLALOM REDSTER FIS SL

MODEL	ART. NO.	SIZE	RADIUS	SHOVEL X WAIST X TAIL	DOUBLEDECK / PLATE	BINDING	FIS RULE
REDSTER FIS SL M	AA0024494	165 cm	12,5 m	118,5 x 66,5 x 102,5 mm	SL X Race 46	X Binding	
REDSTER FIS SL W	AA0024500	158 cm	12,7 m	113 x 65,6 x 98 mm	SL X Race 46	X Binding	
REDSTER FIS SL W	AA0024492	155 cm	12,3 m	112,5 x 65,7 x 97,5 mm	SL X Race 46	X Binding	

## JUNIOR SUPER G D2

### REDSTER FIS DOUBLEDECK SG JR



MODEL	ART. NO.	SIZE	RADIUS	SHOVEL X WAIST X TAIL	DOUBLEDECK / PLATE	BINDING
REDSTER FIS D2 SG JR	AA0024484	195 cm	28,5 m	97 x 64,5 x 86 mm	D2 New	X Binding
REDSTER FIS DR SG JR	AA0024486	185 cm	27 m	99 x 64,5 x 83,5 mm	D2 New	X Binding
REDSTER FIS D2 SG JR	AA0024486	175 cm	27 m	96 x 64,5 x 80,5 mm	D2 New	X Binding

## JUNIOR GIANT SLALOM D2

### REDSTER FIS DOUBLEDECK GS JR



MODEL	ART. NO.	SIZE	RADIUS	SHOVEL X WAIST X TAIL	DOUBLEDECK / PLATE	BINDING
REDSTER FIS D2 GS JR	AA0024466	175 cm	23,5 m	104 x 65 x 88,5 mm	D2 New	X Binding
REDSTER FIS D2 GS JR	AA0024478	171 cm	19,5 m	103,5 x 64,5 x 88 mm	D2 New	X Binding
REDSTER FIS D2 GS JR	AA0024474	165 cm	17,5 m	105,5 x 64 x 88,5 mm	D2 New	Neox
REDSTER FIS D2 GS JR	AA0024474	158 cm	17 m	103,5 x 64 x 86,5 mm	D2 New	Neox
REDSTER FIS D2 GS JR	AA0024474	151 cm	17 m	101 x 64 x 84 mm	D2 New	Neox

## JUNIOR GIANT SLALOM

### REDSTER FIS GS JR



MODEL	ART. NO.	SIZE	RADIUS	SHOVEL X WAIST X TAIL	DOUBLEDECK / PLATE	BINDING
REDSTER FIS GS JR SMT	AASS00130 (XTO 12 Race)	165 cm	17,5 m	105,5 x 64 x 88,5 mm	SAL Grip Lifter	XTO12 Race OME
REDSTER FIS GS JR SMT	AASS00130 (XTO 12 Race)	158 cm	17 m	103,5 x 64 x 86,5 mm	SAL Grip Lifter	XTO12 Race OME
REDSTER FIS GS JR SMT	AASS00130 (XTO 12 Race)	151 cm	17 m	101 x 64 x 84 mm	SAL Grip Lifter	XTO12 Race OME
REDSTER FIS GS JR LTJ	AASS00136 (XTL 10 Race), AASS00134 (XTL 7)	151 cm	17 m	101 x 64 x 84 mm	Lightrak J	XTL10 Race OME XTL7
REDSTER FIS GS JR LTJ	AASS00138 (XTL 10 Race), AASS00140 (XTL 7)	144 cm	14 m	103,8 x 64 x 86 mm	Lightrak J	XTL10 Race OME XTL7
REDSTER FIS GS JR LTJ	AASS00138 (XTL 10 Race), AASS00140 (XTL 7)	137 cm	14 m	101 x 64 x 83,3 mm	Lightrak J	XTL10 Race OME XTL7
REDSTER FIS GS JR LTJ	AASS00138 (XTL 10 Race), AASS00140 (XTL 7)	130 cm	14 m	96,5 x 63 x 80 mm	Lightrak J	XTL10 Race OME XTL7

## JUNIOR SLALOM

### REDSTER FIS SL JR



MODEL	ART. NO.	SIZE	RADIUS	SHOVEL X WAIST X TAIL	DOUBLEDECK / PLATE	BINDING
REDSTER FIS SL JR SMT	AASS00132 (XTO 12 Race)	151 cm	11,5 m	112 x 64 x 96 mm	SAL Grip Lifter	XTO12 Race OME
REDSTER FIS SL JR SMT	AASS00132 (XTO 12 Race)	144 cm	11 m	110,5 x 64 x 93,5 mm	SAL Grip Lifter	XTO12 Race OME
REDSTER FIS SL JR SMT	AASS00132 (XTO 12 Race)	137 cm	10,5 m	108 x 63 x 91 mm	SAL Grip Lifter	XTO12 Race OME
REDSTER FIS SL JR LTJ	AASS00142 (XTL 10 Race), AASS00144 (XTL 7)	137 cm	10,5 m	108 x 63 x 91 mm	Lightrak J	XTL10 Race OME XTL7
REDSTER FIS SL JR LTJ	AASS00142 (XTL 10 Race), AASS00144 (XTL 7)	130 cm	10 m	105 x 63 x 88 mm	Lightrak J	XTL10 Race OME XTL7

## JUNIOR

### REDSTER FIS JR



MODEL	ART. NO.	SIZE	RADIUS	SHOVEL X WAIST X TAIL	DOUBLEDECK / PLATE	BINDING
REDSTER FIS JR LTJ	AASS00150 XTL 7 (white/red)	123 cm	9,7 m	105,5 x 64 x 86,5 mm	Lightrak J	XTL 7 Junior OME
REDSTER FIS JR LTJ	AASS00150 XTL 7 (white/red)	116 cm	9 m	104 x 64 x 84,5 mm	Lightrak J	XTL 7 Junior OME

## BINDINGS

### X RACE

#### X 20 RS AD5001034 BLACK/YELLOW

- DIN Range: 12-20 ► Brake: 70 mm
- Stand Height (front/back): 14,4/16,4 mm ► Full Flex, VAR, EGA



#### X 19 AD5001036 BLACK/YELLOW

- DIN Range: 11-19 ► Brake: 70 mm
- Stand Height (front/back): 15,4/16,4 mm ► Full Flex, VAR



#### X 16 AD5001038 BLACK/YELLOW

- DIN Range: 8-16 ► Brake: 70 mm
- Stand Height (front/back): 15,4/17,4 mm ► Full Flex, VAR



#### X 12 AD5001040 BLACK/YELLOW

- DIN Range: 4-12 ► Brake: 70 mm
- Stand Height (front/back): 15,4/17,4 mm ► Full Flex, VAR



### DISTANCE PLATES FOR X BINDINGS

- Z740212 Distance Plate 1 mm Front X 20 RS, X 19, X 16, X 12 Set (2 pieces + screws)
- Z740218 Distance Plate 1 mm Rear X 20 RS, X 19 Set (2 pieces + screws)
- Z740224 Distance Plate 1 mm Rear X 16, X 12 Set (2 pieces + screws)
- Z740214 Distance Plate 2 mm Front X 20 RS, X 19; X 16, X 12 Set (2 pieces + screws)
- Z740220 Distance Plate 2 mm Rear X 20RS, X 19 Set (2 pieces + screws)
- Z740226 Distance Plate 2 mm Rear X 16, X 12 Set (2 pieces + screws)
- Z740216 Distance Plate 3 mm Front X 20 RS, X 19, X 16, X 12 Set (2 pieces + screws)
- Z740222 Distance Plate 3 mm Rear X 20 RS, X 19 Set (2 pieces + screws)
- Z740228 Distance Plate 3 mm Rear X 16, X 12 Set (2 pieces + screws)

### NEOX

#### NEOX 14 RS AD5001042 BLACK/YELLOW

- DIN Range: 6-14 ► Brake: 76 mm
- Stand Height (front/back): 21/24 mm ► Full Flex



#### NEOX AF 12 RS AD5001044 BLACK/YELLOW

- DIN Range: 4-12 ► Brake: 76 mm
- Stand Height (front/back): 21/24 mm ► Full Flex



### XTO

#### XTO 12 RACE OME AD5001122

- DIN Range: 4-12 ► Brake: 80 mm
- Stand Height (front/back): 25/30 mm ► Full Flex



### XTL

#### XTL 10 RACE OME AD5001120

- DIN Range: 3-10 ► Brake: 80 mm
- Stand Height (front/back): 25/30 mm ► Full Flex



#### XTL 7 JUNIOR OME AD5000266

- DIN Range: 2-7,5 ► Brake: 80 mm
- Stand Height (front/back): 25/30 mm ► Full Flex



# RIDE REDSTER

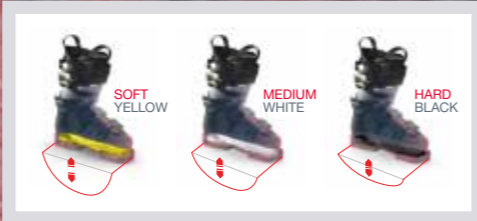
## THE FASTEST BOOT EVER MADE

The new Redster takes the performance skier to a whole new level. In close collaboration with ATOMIC's athletes, our engineers in Altenmarkt have developed a boot which responds more sensitively to the terrain, which steers more precisely and above all else accelerates more explosively. Based on our podium proven geometry, a totally new design has taken shape that boasts greater sensitivity, which is now even lighter, and one that makes you faster.

### CARBON SPINE

Carbon-reinforced areas of the cuff and shell can be up to six times stiffer and more supportive without compromising the feel at the front of the boot.

- Supernatural Acceleration
- Incredible steering precision, increased power transfer, and exceptional edge grip

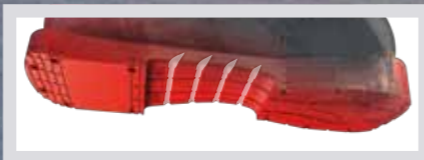


### FLEX FRAMES

Soft, medium and hard frames can be easily exchanged for custom feel.

- Individually customizable according to discipline and skiing style
- Individually tune the feel and sensitivity
- Custom forefoot flexibility delivers better balance, more control
- 200 g weight reduction per pair

### NEW SOLE PROFILE



Long heel section, short toe section connected by an arcing mid section with optimized deformation zones.

- Improved forefoot flexibility offers better balance
- Maximum sensitivity means increased responsiveness and snow feel
- 200 g weight reduction per pair

### MICRO CUFF ALIGNMENT

Doubled amount of cuff alignment; total range of 8°: inward 2°, outward 6°.

- Better alignment = more responsive, more comfortable skiing
- Quicker turn initiation and maximum power transmission
- Customizable according to discipline = faster
- Customizable to biomechanical needs = more comfortable

### ANATOMIC FIT

Goal: create the best out of the box fit. Ever. With the help of world's best boot-fitters, we have created the most anatomically shaped last the ski boot world has ever seen. No need to "make the boot work" - fit more feet instantly without the need for special ovens or compression gadgets.

### ROTATIONAL POWER CONTROL

A new dimension in control & comfort.

- Cuff rotates 5mm in each direction (10 mm of total rotation)
- Lightning fast turn initiation = more efficient, faster skiing
- Customizable according to discipline = faster
- Customizable to biomechanical needs = more comfortable

## REDSTER BOOTS



NEW

### WORLDCUP

#### REDSTER WC 170 LIFTED AE5007400

- Size Range: 25.5–29.5, Half sizes only
- 3 mm injected lift plus 3 mm lifter kit
- 150 Flex ▶ Last 95 mm ▶ Carbon Spine
- RSX SL Locking Buckle ▶ FIS Dual Strap
- ASY Race FIS Liner ▶ All 3 Flex Frames included
- 0 mm & 5 mm Cuff Rotation Hardware included

#### REDSTER WC 160 LIFTED AE5007360

- Size Range: 22.5–29.5, Half sizes only
- 3 mm injected lift plus 3 mm lifter kit
- 160 Flex ▶ Last 95 mm ▶ Carbon Spine
- RSX SL Locking Buckle
- FIS Dual Strap ▶ ASY Race FIS Liner
- All 3 Flex Frames included
- 0 mm & 5 mm Cuff Rotation Hardware included

#### REDSTER WC 150 AE5007420

- Size Range: 22.5–29.5, Half sizes only
- 150 Flex ▶ Last 95 mm
- Carbon Spine ▶ RSX SL Locking Buckle
- FIS Dual Strap
- ASY Race FIS Liner
- All 3 Flex Frames included
- 0 mm & 5 mm Cuff Rotation Hardware included

#### WC 130 AE5007440

- Size Range: 22.5–29.5, Half sizes only
- 130 Flex ▶ Last 95 mm ▶ Carbon Spine
- RSX Alu 7000 Buckle ▶ FIS Dual Strap
- ASY Race FIS Liner ▶ All 3 Flex Frames included
- 0 mm & 5 mm Cuff Rotation Hardware included

#### WC 110 AE5007460

- Size Range: 22.5–29.5, Half sizes only
- 110 Flex ▶ Last 95 mm ▶ Poly Spine
- RSX Alu 7000 Buckle ▶ FIS Dual Strap
- 22.5–24.5 Low Cuff ▶ 25.5–29.5 Unisex Cuff
- ASY Race FIS Liner ▶ Medium Flex Frame included
- 0 mm & 5 mm Cuff Rotation Hardware included



NEW

### PRO

#### REDSTER PRO 130 AE5007300

- Size Range: 23.5–29.5, Half sizes only
- 130 Flex ▶ Last 98 mm
- Carbon Spine ▶ RSX Alu 7000 Buckle
- FIS Dual Strap ▶ ASY Elite T3 Liner
- All 3 Flex Frames included
- 0 mm & 5 mm Cuff Rotation Hardware included

#### REDSTER PRO 110 AE5007320

- Size Range: 22.5–29.5, Half sizes only
- 110 Flex ▶ Last 98 mm ▶ Poly Spine
- RSX Alu 7000 Buckle ▶ 35 mm Strap
- ASY Pro T2 Liner ▶ 22.5–24.5 Low Cuff
- 25.5–29.5 Unisex Cuff
- Medium Flex Frame included
- 0 mm & 5 mm Cuff Rotation Hardware included

#### REDSTER PRO 90 AE5007340

- Size Range: 22.5–29.5, Half sizes only
- 90 Flex ▶ Last 98 mm ▶ Poly Spine
- RSX Alu 7000 Buckle ▶ 35 mm Strap
- ASY Pro T2 Liner ▶ 22.5–24.5 Low Cuff
- 25.5–29.5 Unisex Cuff
- Medium Flex Frame included
- 0 mm & 5 mm Cuff Rotation Hardware included



NEW

### JUNIOR

#### REDSTER WC 90 AE5007480

- Size Range: 22.5–27.5, Half sizes only
- 90 Flex ▶ Last 95 mm ▶ Poly Spine
- RS Alu 6000 Buckle ▶ 35 mm Strap
- ASY Race FIS Liner ▶ All Low Cuff
- Medium Flex Frame included
- 0 mm & 5 mm Cuff Rotation Hardware included

#### REDSTER PRO 80 AE5007280

- Size Range: 22.5–27.5, Half sizes only
- 80 Flex ▶ Last 98 mm
- Poly Spine
- RS Alu 6000 Buckle
- 35 mm Strap
- ASY Sport T1 Liner
- All Low Cuff

#### REDSTER WC 70 AE5007380

- Size Range: 22.5–27.5, Half sizes only
- 70 Flex ▶ Last 95 mm
- Poly Spine
- RS Alu 6000 Buckle
- 35 mm Strap
- ASY Sport T1 Liner
- All Low Cuff

## BOOT ACCESSORIES

AZE000630	FLEX FRAME KIT	1	Soft & hard frames
AZE000632	REDSTER "NO FRAME" BOOT BOARD	2	12/26 mm boot board for WC 70 & PRO 80 only
AZE000628	REDSTER BOOT BOARD HIGH	2	12/26 mm boot board
AZE000638	REDSTER BOOT BOARD LOW	2	12/22 mm boot board
AE5007980	Rotational Cuff Hardware 0mm	3	Neutral cuff position hardware
AE5008000	Rotational Cuff Hardware 3mm	3	3 mm rotation cuff position hardware
AE5008020	Rotational Cuff Hardware 5mm	3	5 mm rotation cuff position hardware
AE5007920	Redster Lifter 3 mm	4	For 22.5 - 25.5
AE5007900	Redster Lifter 3 mm	4	For 26.5 - 29.5
AE5007940	Redster Lifter 5 mm	4	For 22.5 - 25.5
AE5007960	Redster Lifter 5 mm	4	For 26.5 - 29.6



SOFT FRAME

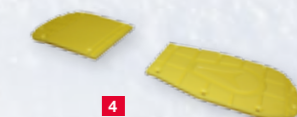
HARD FRAME



2



3



4

## HELMETS

### REDSTER FIS **NEW**

AN5001650

- Sizes: S (54-55 cm), M (56-57 cm), L (58-59 cm), XL (60-61 cm), XXL (62 cm)
- Weight: 650 g
- Carbon style ear pad cover
- Worldcup Liner



### REDSTER JR **NEW**

AN5001652

- Sizes: XS (52-53 cm), S (54-55 cm)
- Weight: 650 g
- Cover ear pad: Carbon style ear pad cover



### TROOP SL

AN5001510

- Sizes: XS (54-55 cm), S (55-56 cm), M (57-58 cm), L (58-59 cm), XL (60-61 cm) XXL (61-62 cm)
- Weight: 500 (+/- 20g)
- Compatible with Slalom Chin Guard
- Removable ear pads ► Removable visor



### SLALOM GUARD (TROOP)

AN5000162

- Sizes: Uni

### TROOP SL JR AN5001512

### UNIQA TROOP SL JR AN5001352

### RAIFFEISEN TROOP SL JR AN5001354

- Sizes: XXS/XS (51-55 cm), S/M (55-58 cm) Weight: 500 (+/- 20g)
- Compatible with Slalom Chin Guard ► Removable ear pads
- Removable visor ► Removable goggle retainer



## GOGGLES

### REDSTER FIS

AN5101500

- Lenses: Single, cylindrical mirror, double anti-fog/anti-scratch
- 3 spare lenses included (red, blue, clear)
- Double black foam ► All weather



### REDSTER JR

AN5101530

- Lenses: Single, cylindrical mirror, double anti-fog/anti-scratch
- Double black foam ► All weather



## PROTECTORS

### RACE SHIRT

AN5200000

- Sizes: S, M, L, XL
- Breathable 4 way mesh/lycra
- EVA paddings



### SHIN GUARD ADULT (WHITE)

AN5201550

- Size: Adult

### SHIN GUARD JR (WHITE)

AN5201560

- Size: Junior



## POLES

### REDSTER CARBON

AJ5001000  
110-135

**NEW**

- Full Carbon 14 mm
- Redster Carbon grip
- Embroidered strap
- Race disc
- Carbide tip



### REDSTER CARBON COMPOSITE

AJ5001004  
110-135

**NEW**

- Carbon Composite 13 mm
- Redster Pro grip
- Race disc
- Carbide tip



### REDSTER BEND

AJ5001002  
115-135

**NEW**

- Alu 7075 18 mm
- Redster Pro grip
- Race strap with label
- Race disc
- Carbide tip



### REDSTER 10

AJ5001006  
110-135

**NEW**

- Alu 6061 18 mm
- Redster Rubber grip
- Race strap
- Race disc
- Steel tip



### REDSTER 10 JR

AJ5001012  
70-105

**NEW**

- Alu 6061 T6 14 mm
- Redster Junior PE grip
- Standard strap 15 mm
- Standard disc
- Steel tip



### REDSTER BEND JR

AJ5001010  
90-110

**NEW**

- Alu 6061 T6 14 mm
- Redster Junior PE grip
- Standard strap 15 mm
- Standard disc
- Steel tip



### SL HAND GUARD

AN5200010  
WHITE

- Suitable for poles with diameter 12,3, 16, 18 or 19 mm



## BAGS

### REDSTER FIS DAY PACK

AL5001018

- Size: 32 x 47 x 20 cm
- Volume/L: 28
- Weight/KG: 1,0
- Padded shoulder straps for carrying skis
- 900D Polyester with PVC backing



### REDSTER FIS TRAVEL WHEELIE **NEW**

AL5001010

- Size: 85 x 34 x 42 cm
- Volume/L: 180 ► Weight/KG: 3,5
- 2 partitioned compartments
- Silent wheels
- 900D Polyester with PVC backing



### REDSTER BOOT BACKPACK **NEW**

AL5001008

- Size: 35 x 34 x 30 cm
- Volume/L: 36 ► Weight/KG: 1,4
- Boot and helmet extendable
- Padded shoulder straps ► Ground sheet
- 900D Polyester with PVC backing



### REDSTER FIS BOOT PACK **NEW**

AL5001016

- Size: 68 x 35 x 36 cm
- Volume/L: 72 ► Weight/KG: 2,3
- Ground sheet ► Extra boot pockets
- New ergonomic fit
- 900D Polyester with PVC backing



### REDSTER FIS DOUBLE SKI WHEELIE **NEW**

AL5001012

- Length: 205, 225 cm ► Volume/L: 350
- Weight/KG: 5,3 ► 2 pair travel bag with reduced weight for air travel
- Reinforced frame ► 900D Polyester with PVC backing



### REDSTER FIS BOOT/HELMET PACK

AL5001020

- Size: 35.5 x 34.5 x 29.5 cm
- Volume/L: 36 ► Weight/KG: 1,05
- Big main compartment
- Space for 1 pair boots, helmet, gloves
- Adjustable shoulder strap
- 900D Polyester with PVC backing



### RACING SKIFIX (10 PCS)

AL5001100



### ECONOMY SKIFIX (10 PCS)

AL5000542

- Size: 10 x 1 x 3,5 cm ► Weight: 10 g



## FIS PRODUCTS USER RECOMMENDATION 2012/2013

Ski selection of FIS products, both length and model, will be always very individual and a subjective decision. We noticed some common trends and following chart should help to make the right decision. The optimal FIS model ski and length is determined by the ability, the weight and also the strength of the user.

	WEIGHT (kg)	WEIGHT (lbs)	RACE ALLROUND	LENGTH (cm)	BINDING	BOOT	TARGET GROUP
<b>ENTRY LEVEL</b> Ages 6 – 10	18 - 23	40 - 50	REDSTER	116	XTL 7	RJ 4 / RJ 60	For young performance racers
	23 - 27	50 - 60	REDSTER	123	XTL 7	RJ 60	For young performance racers

	WEIGHT (kg)	WEIGHT (lbs)	SL	LENGTH (cm)	BINDING	GS	LENGTH (cm)	BINDING	BOOT	TARGET GROUP
<b>K 1</b> Ages 11 – 12 (2000 - 2001)	32 - 36	70 - 80	REDSTER	130	XTL 10	REDSTER	130/137	XTL 10	RJ 60 / WC 70	For young performance SL and GS racers
	36 - 41	80 - 90	REDSTER	130/137	XTL 10, XTO 12	REDSTER	137/144	XTL 10		For young performance SL and GS racers
	41 - 45	90 - 100	REDSTER	137/144	XTL 10, XTO 12	REDSTER, REDSTER D2	144/151	XTL 10, XTO 12, NEOX	WC 70	For young performance SL and GS racers
	45 - 50	100 - 110	REDSTER	144	XTO 12	REDSTER, REDSTER D2	158/165	XTO 12, NEOX		For young performance SL and GS racers
	50 - 54	110 - 120	REDSTER	144/151	XTO 12	REDSTER, REDSTER D2	158/165	XTO 12, NEOX	WC 90	For young performance SL and GS racers
54 +	120 +	REDSTER	151	XTO 12	REDSTER, REDSTER D2	165	XTO 12, NEOX		For young performance SL and GS racers	

	WEIGHT (kg)	WEIGHT (lbs)	SL	LENGTH (cm)	BINDING	GS	LENGTH (cm)	BINDING	BOOT	TARGET GROUP
<b>K2</b> Ages 13 – 14 (1998 - 1999)	41 - 45	90 - 100	REDSTER	137/144	XTO 12	REDSTER	151/158	XTO 12, NEOX	WC 70	For young performance SL and GS racers
	45 - 50	100 - 110	REDSTER	144/151	XTO 12	REDSTER	158/165	XTO 12, NEOX		For young performance SL and GS racers
	50 - 54	110 - 120	REDSTER	151	XTO 12	REDSTER	165	XTO 12, NEOX	WC 90	For young performance SL and GS racers
	54 - 59	120 - 130	REDSTER	151	XTO 12	REDSTER D2	171	X 12		For young performance SL and GS racers
	59 - 68	130 - 150	REDSTER, REDSTER FIS	151/155	XTO 12, X 12	REDSTER D2	176	X12, X16	WC 110 / WC 130	For young performance SL and GS racers
68 +	150	REDSTER FIS	155	X16	REDSTER D2	176/183	X 16	WC 130	For young performance SL and GS racers	

	WEIGHT (kg)	WEIGHT (lbs)	SL	LENGTH (cm)	BINDING	GS	LENGTH (cm)	BINDING	BOOT	TARGET GROUP
<b>FIS WOMEN</b> Ages 15 and up (1997 +)	50 - 54	110 - 120	REDSTER FIS	155	X16	REDSTER FIS D2	183	X 16	WC 90	Form FIS to World Cup Racers
	54 - 59	120 - 130	REDSTER FIS	155	X16	REDSTER FIS D2	183	X 16	WC 110	Form FIS to World Cup Racers
	59 - 64	130 - 140	REDSTER FIS	155/158	X 16	REDSTER FIS D2	183	X 16, X19		Form FIS to World Cup Racers
	64 - 69	140 - 150	REDSTER FIS	158	X 16	REDSTER FIS D2	183/188	X16, X19	WC 130	Form FIS to World Cup Racers
	69 - 73	150 - 160	REDSTER FIS	158	X19	REDSTER FIS D2	188	X 19		Form FIS to World Cup Racers
	73 +	160 +	REDSTER FIS	158	X19	REDSTER FIS D2	188	X 19	WC 130 / WC 150	Form FIS to World Cup Racers

	WEIGHT (kg)	WEIGHT (lbs)	SL	LENGTH (cm)	BINDING	GS	LENGTH (cm)	BINDING	BOOT	TARGET GROUP
<b>FIS MEN</b> Ages 15 and up (1997 +)	54 - 59	120 - 130	REDSTER FIS	158	X16	REDSTER FIS D2	188	X16	WC 110	Form FIS to World Cup Racers
	59 - 64	130 - 140	REDSTER FIS	165	X16	REDSTER FIS D2	188	X19		Form FIS to World Cup Racers
	64 - 69	140 - 150	REDSTER FIS	165	X16	REDSTER FIS D2	188	X19	WC 130	Form FIS to World Cup Racers
	69 - 73	150 - 160	REDSTER FIS	165	X19	REDSTER FIS D2	188/195	X19	WC 150	Form FIS to World Cup Racers
	73 - 77	160 - 170	REDSTER FIS	165	X19	REDSTER FIS D2	195	X19, X20		Form FIS to World Cup Racers
	77 +	170 +	REDSTER FIS	165	X19	REDSTER FIS D2	195	X19, X20	WC 160 / WC 170	Form FIS to World Cup Racers

## SPECIFICATIONS FOR COMPETITION EQUIPMENT 2012/2013

	DISCIPLINE	COC LADIES & MEN FIS LADIES & MEN	WC LADIES & MEN EC LADIES & MEN
Ski length (minimum) Ski length measurement tolerance of +/-1cm	DH LADIES	210**	210
	DH MEN	215**	218
	SG LADIES	200**	205
	SG MEN	205**	210
	GS LADIES	180**	188
	GS MEN	185**	195
Profil width under binding	SL LADIES	155	155
	SL MEN	165	165
	DH LADIES	>= 67	<= 65
	DH MEN	>= 67	<= 65
	SG LADIES	>= 65	<= 65
	SG MEN	>= 65	<= 65
Profil width in front of binding	GS LADIES	>= 65	<= 65
	GS MEN	>= 65	<= 65
	SL LADIES	>= 63	<= 63
	SL MEN	>= 63	<= 63
	DH LADIES		<= 95
	DH MEN		<= 95
Radius (minimum)	SG LADIES	33	40
	SG MEN	33	45
	GS LADIES	23	30
	GS MEN	27	35
	SL LADIES		
	SL MEN		
Maximum standing height (ski/plates/binding)	SL + GS LADIES & MEN	50	50
	DH + SG LADIES & MEN	50	50

\*\* (- 5 cm tolerance for FIS & ENL)

## ATHLETES SEASON 2011/2012

COUNTRY	WC/EC	NAME	COUNTRY	WC/EC	NAME	
AUT	WC MEN	Raich Benni	GER	WC Men	Strodl Andreas	
		Scheiber Mario			Sander Andreas	
		Schörghofer Philipp				
		Hirscher Marcel	CAN	WC MEN	Kucera John	
		Sieber Björn			Guay Erik	
				Puchner Joachim	FRA	WC MEN
Kramer Manuel	WC WOMEN			Aubert Sandrine		
				Franz Max	SWE	WC MEN
		Zettel Kathrin		Olsson Matts		
				Schild Marlies	USA	WC MEN
Fischbacher Andrea				Ganong Travis		
				Kirchgasser Michaela		WC/NORAM
		Brem Eva Maria		Mc Kennis Alice		
				Schmidhofer Nicole		
Schild Bernadette	CRO			WC MEN		
				Staudinger Christina	LIE	WC WOMEN
		SUI	WC MEN		MEN	Georgi Georgiev
						Janka Carlo
		Albrecht Daniel	UK	WC Men	Drake Ed	
		Murisier Justin			WC Women	Alcott Chemmy
				Hangl Celina	ITA	WC Men
Ploner Alexander	WC Women			Curtoni Elena		

**▶ Argentina**

WINNERS PRODUCTOS DEPORTIVOS S.A.  
Av. Leandro Alem 690 Piso 22  
1001 Ciudad de Buenos Aires  
Tel.: +5411-5256-5000  
agustin@winnersargentina.com.ar

**▶ Armenia**

ALISA COOPERATIVE  
52 Terian Street  
375009 Yerevan  
Tel.: +37 41056 46 47  
noah-sports@netsys.am

**▶ Australia**

AMER SPORTS AUSTRALIA  
18-20 Lakewood Blvd.  
Braeside VIC 3195  
Tel: +61 3 8586-6666  
Fax: +61 3 9587-2289  
info@amersports.com.au

**▶ Austria**

AMER SPORTS AUSTRIA GMBH  
Moosfeldstraße 1  
5105 Berghheim  
Tel.: +43 6452 3900-180  
Fax: +43 6452 3900-16  
customerservice.austria@amersports.com

**▶ Belarus**

BELADVACOM LTD.  
2-th Shestaja str., 11  
Minsk  
Republic of Belarus  
Tel.: 00375(17)2902456  
Fax: 00375(17)2902458  
info@beladva.com

**▶ Belgium**

AMER SPORTS FRANCE  
63, rue Condorcet - BP 128  
38093 Villefontaine Cedex  
Tel.: +33-4 74 99 1515  
Fax: +33-4 74 99 1516  
atomicski.france@amersports.com

**▶ Bosnia and Herzegovina**

COMPRES  
Brcanska 16, Otoka  
BIH-71000 Sarajevo  
Tel.: +387 33 650-615  
Fax: +387 33 712-540  
compres@bih.net.ba

**▶ Bulgaria**

BARANKO SPORT CENTER EOOD  
4, Luben Karavelov Str.  
1142 Sofia  
Tel.: +359 2 980 9401  
Fax: +359 2 981 7330  
office@baranco-sport.com

**▶ Canada**

ATOMIC SPORTS CANADA  
2700 14th Ave Unit 1  
Markham, Ontario L3R 0J1  
Tel.: +1 905 470 9966  
Fax: +1 905 470 7356  
info@atomiccanada.com

**▶ Chile**

GRYLAN LTDA.  
Antilaca #491/Camino lo Echevers  
Quilicura, Santiago, Chile  
Tel.: +562 627 5065  
Fax: +562 607 0036  
ramoncruz@grylan.cl  
pabloocruz@grylan.cl

**▶ China**

HI-RIDER SKIING GEAR COMPANY  
Hua Yun Hotel D210  
Jia 26 Zhanlanguan Street  
Beijing, P.R. China  
Tel.: +86-10-88389664  
Fax: +86-10-68365520 or  
+86-68363935  
william@hi-rider.com.cn

**▶ Croatia**

AMER SPORTS AUSTRIA GMBH  
Moosfeldstrasse 1  
A - 5101 Berghheim  
Tel: +43 662 45 55 47 - 0  
info.austria@amersports.com

**▶ Cyprus**

FORCE EIGHT SPORTS LTD.  
107 B, Fr. Roosevelt Avenue  
P.O. Box 54402  
3724 LIMASSOL  
Tel.: +357 25579919  
Fax: +357 25564426  
force8@spidernet.com.cy

**▶ Czech Republic**

AMER SPORTS  
CZECH REPUBLIC S.R.O.  
V Chotejne 700/7  
102 00 Praha 10  
Tel.: +420 / 2 7270 0963  
Fax: +420 / 2 7270 4216  
silvie.menclova@amersports.com

**▶ Denmark**

AMER SPORTS DANMARK APS  
Kokkedal Industripark 14B  
2980 Kokkedal  
Tel.: +45 45565530  
Fax: +45 45565531  
info.denmark@amersports.com

**▶ Dubai**

SKI DUBAI  
Mall of the Emirates  
Sheik Zayed Road  
Dubai, U.A.E.  
Tel: +971 4 409 4100  
Fax: +971 4 409 4101  
Jack.Nesgos@maf.ae  
Via.Nunez@maf.ae  
Melissa.Visser@maf.ae

**▶ Finland**

AMER SPORTS SUOMI OY  
Mäkelänkatu 91  
00601 Helsinki  
Tel.: +358/207 789 600  
Fax: +358/972578401  
finland@amersports.com

**▶ France (Belgium & Luxembourg)**

AMER SPORTS FRANCE  
63, rue Condorcet - BP 128  
38093 Villefontaine Cedex  
Tel.: +33-4 74 99 1515  
Fax: +33-4 74 99 1516  
atomicski.france@amersports.com

**▶ Georgia**

DV SPORT LTD.  
St. Toidze 2/10  
0201 St. Toidze  
Tel.: +995 32 397999  
Fax: +995 32 911739  
dvsport@gol.ge

**▶ Germany**

AMER SPORTS DEUTSCHLAND  
GMBH  
Parkring 15-17  
85748 Garching  
Tel.: +49 89 89801 03  
Fax: +49 89 89801 129  
customer.service@amersports.com

**▶ Great Britain**

AMER SPORTS UK LTD.  
Theta Building, Lyon Way  
Frimley, GU16 7ER, Surrey  
GREAT BRITAIN  
Tel.: +44 1276-404990  
Fax: +44 1276-404801  
customer.serviceuk@amersports.com

**▶ Greece**

HELLENIC FLAME SA  
112 Vouliagmenis Ave & Zamanou 1st  
166-74 Glyfada  
Athens - Greece  
Tel.: +30 2109608400  
Fax: +30 2109608418  
panos.andritsopoulos@hellenicflame.gr

**▶ Hongkong**

FUN 'N SNOW LIMITED  
1801 Wing on Central Building  
26 Des Voeux Road Central  
Central  
Hongkong  
Tel: +852 28574504  
info@funnsnow.com

**▶ Hungary**

AMER SPORTS AUSTRIA GMBH  
Moosfeldstrasse 1  
A - 5101 Berghheim  
Tel: +36 30 69 31 995  
gabor.tettamanti@amersports.com

**▶ Iceland**

PROSPORT EHF - ISLENSKU  
ALPARNIR  
Faxafen 8  
108 Reykjavik  
Tel.: +354 5342727  
Fax: +354 5528987  
alparnir@alparnir.is

**▶ India**

OSHONIK VISION (INTER-NATIONAL)  
PVT. LTD.  
5-G Shahpur Jat,  
Near Hauz Khas  
New Delhi - 110 049  
Tel.: +91 11 2649 8455  
Fax: +91 11 2649 7640  
oshonik@gmail.com

**▶ Iran**

NIK VARZESH PIROUZ Co.  
Apt#5, No. 243 Sarfaraz  
St. Motahari Ave.  
Tehran 19688  
Tel.: +98-21-22253288  
Fax: +98-21-22253286  
info@niksport.com

**▶ Israel**

SHLAGIM - SKI & SPORT  
P.O.Box 75,  
Kfar Monash, 42875  
Tel.: +972-9-8941721  
Fax: +972-9-8940225  
shlagim@barak-online.net

**▶ Italy**

AMER SPORTS ITALY SPA  
Via Priula 78  
31040 Nervesa della Battaglia (TV)  
Tel.: +39 0422 5291  
Fax: +39 0422 5291 99  
amersports-italy@amersports.com

**▶ Japan**

AMER SPORTS JAPAN INC.  
TOC Ariake West Tower 8F  
2-5-7 Ariake  
Koto-ku, TOKYO, 135-0063  
Tel.: +81-3-3527-8717  
Fax: +81-3-3527-8737  
info\_atomic@atomicnow.jp

**▶ Kazakhstan**

PRITA SPORT LAND  
Tole bi str. 78  
480091 Almaty  
Tel.: +7 327 272-06-06  
Mob: +7 701 722 03 82  
natalia\_k@nssgroup.kz

**▶ Kirgistan**

ELDIYAR KELGEMBAEV  
157-3 Volkova Str.  
720000 BISCHKEK, KIRGISTAN  
gergert@mail.ru

**▶ Korea**

AMER SPORTS KOREA LTD.  
3 Fi. Namdo-Bldg. # 53-4  
Chungdam-Dong, Kangnam-Gu  
Seoul, 135-100  
Tel.: +82-2-518-0781  
Fax: +82-2-547-5464  
Daniel.lee@amersports.co.kr

**▶ Kosovo**

VLENDI Ltd.  
str. Mazilum Lakuci 52  
50010 GJAKOVA  
Tel.: + 381 390 327 888  
Fax: + 381 390 327 888  
ntisina@hotmail.com

**▶ Latvija**

SIA "BGF"  
51/A, Dzelzavas street  
1084 Riga  
Tel.: +37167802370  
Fax: +371 67802351  
ivo.germanis@motosports.lv

**▶ Lebanon**

WINTERSPORT S.A.R.L  
P.O Box 55-418  
Beirut  
Tel: +961-3-208238  
Fax: +961-1-490664/665  
wintersport@idm.net.lb

**▶ Lithuania**

UAB PROSPORT LT.  
Draugystes 19  
51230 Kaunas  
Tel: +370 67270159  
Fax: +370 37 210580  
info@prosport.lt

**▶ Macedonia**

SPORT LIFE D.O.O.  
V. Vlahovic 31  
1000 Skopje  
Tel.: +389 2 3127 360  
Fax: +389 2 3127 360  
sportlife@telekabel.net.mk

**▶ Moldova**

IM SPORTVISION SRL  
Str. Bucuresti, 59  
2012 Chisinau City  
Tel./Fax: + 373 22 83 04 55  
sportvision.srl@gmail.com

**▶ Netherlands**

ATOMIC NETHERLANDS  
Plesmanstraat 1, 3833 LA LEUSDEN  
Tel: +31 33 457 3333  
Fax: +31 33 457 3334  
atomic.netherlands@amersports.com

**▶ New Zealand**

BRANDEX LTD.  
204 Cumnor Terrace, PO Box 19-704  
Woolston 8002, Christchurch  
Tel: +64/3/381/2190  
Fax: +64/3/381/2191  
hq@brandex.co.nz

**▶ Norway**

AMER SPORTS NORGE AS  
Eyvind Lychesvei 9C, PB 293  
1301 Sandvika  
Tel: +47 6755 1330  
Fax: +47 6755 1331  
info.norway@amersports.com

**▶ Poland**

AMER SPORTS POLAND  
SP Z.O.O.  
ul. Bociana 22 A  
PL 31-231 KRAKOW  
Tel: 0048 12 6145200  
Fax: 0048 12 6145201  
Wojciech.Siadak@amersports.com

**▶ Romania**

ABITARE CG SRL  
Str. Brazilor Nr. 55  
500313 Brasov  
Tel.: +40 268/412600  
Fax: +40/268/476044  
info@abitaresports.ro

**▶ Russia**

AMER SPORTS RUSSIA  
Kaluzhskoe shosse, 21 km  
MEGA Mall, Office 208  
Leninsky District,  
Village Mamyri  
142704 Moscow region  
Tel: +7 495 6412646  
Fax: +7 495 641 2645  
pavel.serebrovski@amersports.com

**▶ Serbia**

BEO-SPORT SYSTEM D.O.O.  
Viline Vode 47  
11000, Beograd  
Tel.: +381 11 2088 132  
Fax: +381 11 2088 129  
equipment@beosport.com

**▶ Slovakia**

AMER SPORTS CZECH REPUBLIC,  
s.r.o., OZ  
Hattalova 12  
831 03 Bratislava  
Slovakia  
Tel: + 421 2 44640011  
Fax: + 421 2 44450923  
tomas.jezo@amersports.com

**▶ Slovenia**

SLOVENIA  
AMER SPORTS AUSTRIA GMBH  
Moosfeldstrasse 1  
A - 5101 Berghheim  
Tel: +43 662 45 55 47 - 0  
info.austria@amersports.com

**▶ Spain**

AMER SPORTS SPAIN SA  
Parque de Negocios Mas Blau II  
C/ Conca de Barberà 4-6  
08820 El Prat de Llobregat, Barcelona  
Tel: +34 93 262 5100  
Fax: +34 93 262 5101  
infoatomic@amersports.com

**▶ Sweden**

AMER SPORTS SVERIGE AB  
Asboholmogatan 16  
504 51 Boras  
Tel.: +46 33 233 700  
Fax: +46 33 233 740  
info.sweden@amersports.com

**▶ Switzerland**

AMER SPORTS SA  
Bachtalen 33  
6332 Hagendorn  
Tel.: +41 41 784 26 26  
Fax: +41 41 784 26 27  
info.schweiz@amersports.com

**▶ Turkey**

DENIZSPOR SPOR MALZEMELERI  
TICARET A.S.  
Imam Ramiz Caddesi No. 109  
81060 Merdivenköy - Istanbul  
Tel: +90 216 467 1383  
Fax: +90 216 467 0889  
denizspor@superonline.com

**▶ Ukraine**

PRO SPORT LLC  
14a Chervonopartizanskaya Str., app.  
202  
03037 KYIV  
UKRAINE  
Tel: +38 044 207 12 01  
Fax: +38 044 207 12 02  
wilson@i.com.ua

**▶ USA**

ATOMIC USA  
2030 Lincoln Ave  
Ogden Utah, 84401  
Tel.: +1 800-258-5020  
Fax: +1 801-334-4503  
info@atomicski.com

**▶ Head Office**

ATOMIC Austria GmbH  
Lackengasse 301  
5541 Altenmarkt  
Tel.: +43 6452 3900-0  
Fax: +43 6452 3900-120  
info.atomic@amersports.com  
www.atomicsnow.com



WE ARE SKIING  
WWW.ATOMICSNOW.COM

© ATOMIC Austria GmbH 2012. Technical information, colors and product designs subject to change. All rights reserved. Atomic accepts no responsibility for mistakes and printing errors.